

CALENDAR 2012
FACULTY OF EDUCATION
SCIENCES
UNDERGRADUATE
PROGRAMMES PGCE
Potchefstroom campus

Address all correspondence to:

The Registrar
North-West University, Potchefstroom Campus
Private Bag X 6001
POTCHEFSTROOM
2520

Tel: (018) 299-1111/2222

Fax: (018) 299-2799

Internet: <http://www.nwu.ac.za>

PLEASE MENTION YOUR STUDENT NUMBER IN ALL CORRESPONDENCE.

The General Academic Rules of the University, to which all students are to adhere and which apply to all the qualifications offered by the University, appear in a separate publication and are available on the website at: http://www.nwu.ac.za/export/sites/default/nwu/gov_man/policy/7P-Academic_Rules_a.pdf...

Please note: Although the information in this Calendar has been compiled with the utmost care and accuracy, the Council and the Senate of the University accept no responsibility whatsoever for errors that may occur. Before students make final selection of modules, it is their responsibility to consult the class timetable regarding possible clashes. Should there be a clash in a student's planned selection, the relevant module combination will not be permitted.

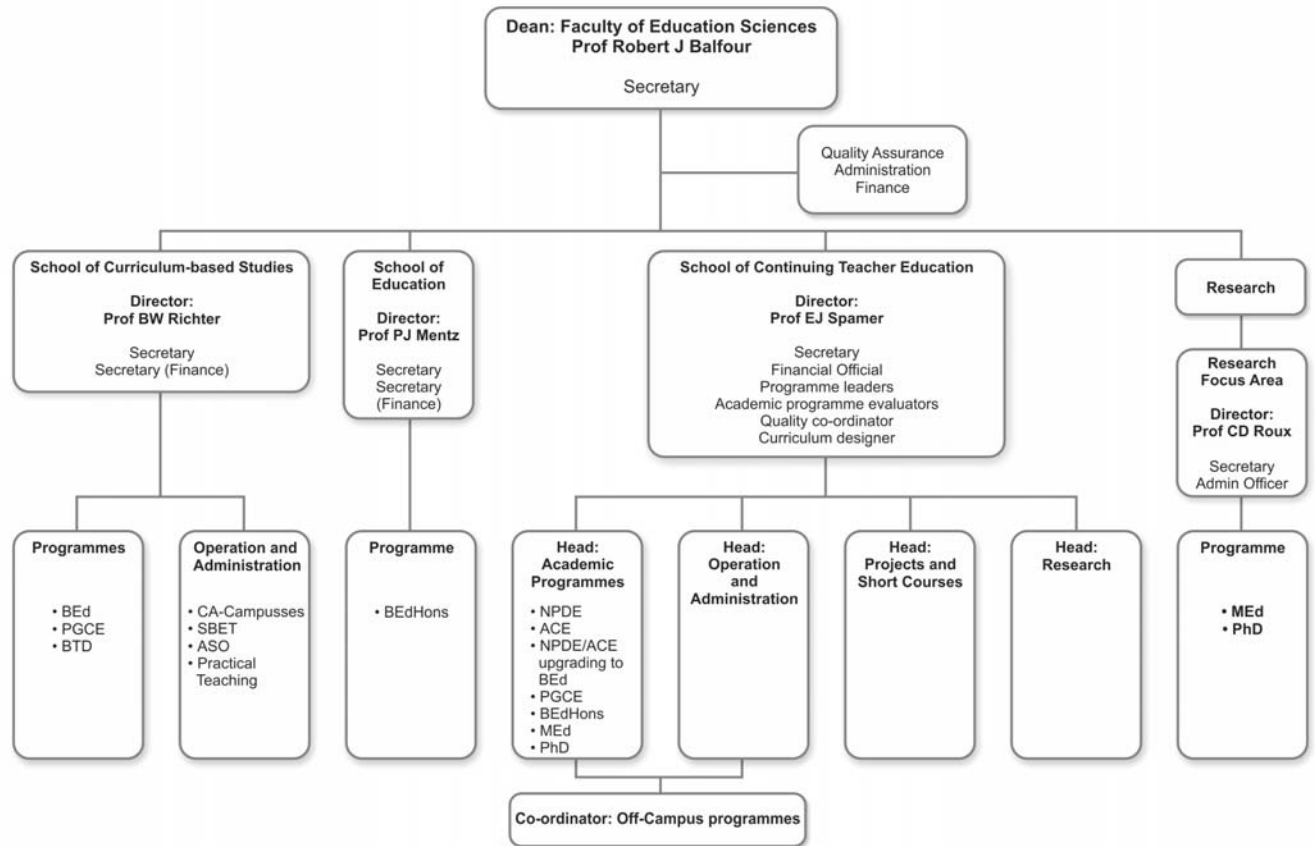


Table of contents

ORGANIGRAM.....	3
FACULTY BEARERS	5
OP.1 FACULTY RULES.....	7
OP.1.1 AUTHORITY OF THE GENERAL ACADEMIC RULES	7
OP.1.2 FACULTY SPECIFIC RULES AND REGULATIONS.....	7
OP.1.2.1 Admission requirements.....	7
OP.1.2.2 Examination opportunities	7
OP.1.2.3 Calculation of participation mark.....	7
OP.1.2.4 Admission to examinations	7
OP.1.2.5 Pass requirements for modules, curricula and programmes.....	8
OP.1.2.6 Modules and credits.....	8
OP.1.2.7 Termination of studies	8
OP.1.2.8 Other rules	8
OP.1.3 WARNING AGAINST PLAGIARISM.....	9
OP.1.4 CAPACITY STIPULATION	9
OP.1.5 RECOGNITION OF PRIOR LEARNING	9
OP.1.6 SCHOOLS IN THE FACULTY	10
OP.1.7 QUALIFICATIONS, PROGRAMMES AND CURRICULA	10
OP.1.8 RULES FOR THE DEGREE POST GRADUATE CERTIFICATE IN EDUCATION (PGCE).....	11
OP.1.8.1 Duration (minimum and maximum duration).....	11
OP.1.8.2 Admission requirements for the qualification.....	11
OP.1.8.3 List of modules.....	12
OP.1.8.4 Curriculum O160P: PGCE Senior & Further education and training phase.....	14
OP.1.8.4.1 Curriculum outcomes	14
OP.1.8.4.2 Compilation of curriculum O160P: PGCE.....	14
OP.2 MODULE OUTCOMES	15

Faculty of Education Sciences: Office Bearers

Executive Dean

Prof RJ Balfour (BA, BAHons, HDE (PGCE), MA, PhD)

Directors of Schools / Research Unit

School for Curriculum-based studies (SCS)

Prof BW Richter (BA, BAHons, MA, PhD, UED)

School of Education (SE)

Prof PJ Mentz (BA, HED (Postgraduate), BEd, MEd, DEd, DTE)

School of Continuing Teacher Education (SCTE)

Prof EJ Spamer (BA, HED, BAHons, MA, PhD)

Research Focus Area: Teaching-Learning organisations

Prof CD Roux (BA, BAHons, SED, MA, DPhil)

Administrative Manager

Ms AMC Cloete

Management Committee of the Faculty

Chairperson: Prof RJ Balfour

Members:

Prof BW Richter

Prof EJ Spamer

Prof PJ Mentz

Prof CD Roux

Ms JM van Heerden (Financial Officer)

Ms AMC Cloete (*ex officio* – Minuting Secretary)

Faculty Board

Chairperson: Executive Dean

Members:

Directors of the schools and Research Focus Area

Faculty representatives in the Campus Senate

Faculty representatives in the Institutional Senate

Research professors of the SCTE, SCS and SE

Programme leaders:

- MEd and PhD
- BEdHons
- BTD
- PGCE (offered on-campus and via distance learning)
- BEd
 - Foundation Phase
 - Intermediate and Senior Phase
 - Senior and Further Education and Training Phase
 - Senior and Further Education and Training Phase (Technology)
 - NPDE/ACE upgrade to BEd
- ACE
- NPDE

Subject-group chairpersons
Head: Academic (SCTE)
Head: Business and Administration (SCTE, SE and SCS)
Head: Projects and Short Courses (SCTE)
Head: Student Support Division
Coordinator: Quality (SCTE)
Student representatives
Representative of the Faculty of Natural Sciences
Administrative Manager (*ex officio* – Minuting Secretary)

CONTACT DETAILS FOR THE FACULTY

Telephone number: 018 299 1766
E-mail address: Edu-EnquiryPotch@nwu.ac.za

OP.1 FACULTY RULES

OP.1.1 AUTHORITY OF THE GENERAL ACADEMIC RULES

The faculty rules applicable to the different qualifications, programmes and curricula offered by the Faculty and contained in this faculty calendar are subject to the General Academic Rules of the University, as determined from time to time by the Council of the University on recommendation by the Senate. The faculty rules should therefore be read in conjunction with the General Academic Rules.

OP.1.2 FACULTY SPECIFIC RULES AND REGULATIONS

The teaching policy of the Faculty of Education Sciences is in accordance with the vision and mission of the North-West University.

Procedures regarding quality assurance in the Faculty (Teaching-Learning Policy and Assessment and Moderation Policy) are available on our webpage at:

(a) http://www.nwu.ac.za/export/sites/default/nwu/gov_man/policy/8P-TL_e.pdf

(b) http://www.nwu.ac.za/export/sites/default/nwu/gov_man/policy/8P-8.1.7-assessment_e.pdf;

Research Policy:

The research policy of the Faculty of Education Sciences is in accordance with the vision and mission of the North-West University. The development of academic scholarship is a priority as is the maintenance of relevant, innovative, leading and focused research to address the challenges faced by education both nationally and internationally.

The webpage for the Research Focus Area of the Faculty of Education Sciences:

<http://www.nwu.ac.za/p-retlo/welc.html>.

OP.1.2.1 Admission requirements

Requirements for admission to the University are stipulated in General Academic Rules A.5.1 (undergraduate degree), A.6.1 (honours degree), A.7.1 (MEd) and A.8.1 (PhD). Specific requirements are stated in the rules for the various qualifications, programmes and curricula offered by the Faculty of Education Sciences.

OP.1.2.2 Examination opportunities

Examination opportunities and the relevant rules are determined according to the General Academic Rule A.5.4, A.6.4, A.7.4 en A.8.4.

OP.1.2.3 Calculation of participation marks

- a) Participation marks for a module are compiled from tests, assignments, practical and/or research assignments. (Refer to General Academic Rule A.5.4.3.)
- b) The ratio between theory and practical work for calculating the participation mark for a module is calculated as set out in the relevant study guides.

OP.1.2.4 Admission to examinations

- a) Admission to the examination in any module requires proof of participation (General Academic Rule A.5.4.3, undergraduate degree; A.6.4.3, honours degree; A.7.4.3, MEd; and A.8.4.3, PhD.)
- b) Proof of participation, which allows admission to the examination, will only be issued once a student has complied with the requirements for the module concerned to the satisfaction of the school director in consultation with the relevant subject group

chairperson/programme leader. The requirements are stipulated in the study guide for the module concerned and under the module outcomes in this calendar.

OP.1.2.5 Pass requirements for modules, curricula and programmes

- a) General Academic Rules 5.4.4, A.6.4.4, A.7.5.5 and A.8.5.5 and all the subparagraphs apply.
- b) The module mark is calculated according to the ratio between the participation mark and the examination mark as set out under the module outcomes in this calendar.
- c) The module mark required for a pass in a module in which examinations are written is 50%.
- d) The subminimum for all modules in which examinations are written is 40% (General Academic Rule 5.4.4.4), unless stated otherwise in the rules of specific programmes and curricula.
- e) Adjustment of the module mark for a first semester module in which an examination was written but not passed may be considered according to the stipulations of General Academic Rule A.5.4.4.2.
- f) General Academic Rule A.5.4.5 stipulates the requirements for passing a module/curriculum/qualification with distinction.
- g) A pass is obtained for a curriculum once all the modules of the programme have been passed individually. (General Academic Rule A.1.16.)

OP.1.2.6 Modules and credits

- a) Subjects are presented according to modules, to which a certain number of credits are allocated.
- b) Each module has a certain weight, known as a credit (General Academic Rule A1.15).
- c) Modules have a code and a descriptive name, e.g. ACCE 121. The meaning of the codes is explained in General Academic Rule A1.39.
- d) Each module is to be passed individually.
- e) Programme-specific rules (apply according to the relevant calendar): BEd: A student may, at the most, in any module, take the examination twice within the twelve months following the date of the student's first registration for such a module, after which the module concerned must be repeated. BEdHons: An honours student may only repeat a failed module once. In the event of the student failing more than 25% of the modules in the relevant curriculum the student's studies will be terminated. (General Academic Rule A 6.6.) Each programme stipulates the number of examination opportunities in a module that may be sat or repeated.

OP.1.2.7 Termination of studies

A student's studies may be terminated in accordance with the stipulations of General Academic Rule A.5.7 (undergraduate), A.6.6 (honours degree), A.7.7 (MEd) and A.8.7 (PhD).

OP.1.2.8 Other rules

Method of delivery: This qualification can be taken full-time or through the School Based Education Teacher training program (SBET).

Directed observation

- a) Before starting the course a student must attend an approved school for preparatory work related training for at least two weeks.
- b) If there are valid reasons for a student not fulfilling this requirement, it may be undertaken earlier/later with the written consent of the Director.
- c) SBET students do their directed observation at the school where they do their training.

Work-related training

Full-time students:

- a) All campus students must participate in the work integrated learning program. The **work integrated** learning of the full-time program differs from the SBET program. All students

must complete a total of 9 weeks (including directed observation) before a certificate will be issued.

- b) **Work integrated learning** involves additional costs that must be borne by the student. These costs are not included in the tuition fees.

SBET Students:

- a) SBET students are exempted from the **work integrated learning** because they are in the employ of the school for the duration of their studies and are under the supervision of an experienced mentor who regularly provides feedback to the Practical Teaching Office. Lecturers visit SBET students during the on campus work related training teaching period.
- b) Students are obliged to attend at least two contact sessions on campus. The additional cost must be borne by the student as they are not included in the tuition fees.

Obtaining language endorsements

All students must obtain two (2) language endorsements. Students (non-mother tongue speakers) receive an a, e or t automatically due to the fact that they passed matric and completed a first degree. Non-mother tongue speakers wishing to qualify for an A, E or T must report for a language competency test. Mother tongue speakers must also present themselves for an automatic A, E or T. Learners who have attained at least 24 credits in the mother / first language receive an A, E, T etc.

OP.1.3 WARNING AGAINST PLAGIARISM

Assignments are individual tasks and not group activities (unless explicitly indicated as group activities). For further details see:

http://www.puk.ac.za/opencms/export/PUK/html/beheer-bestuur/beleid-reels/WARNING_AGAINST_PLAGIARISM.pdf

OP.1.4 CAPACITY STIPULATION

Please take note that, owing to specific capacity constraints, the University reserves the right to select candidates for admission to certain fields of study. This means that prospective students who comply with the minimum admission requirements may not necessarily be admitted to the course for which they applied.

OP.1.5 RECOGNITION OF PRIOR LEARNING

The process for recognition of prior learning is stipulated in General Academic Rules A.1.54, A.5.1.2.6 and A.6.1.2.

OP.1.6 SCHOOLS IN THE FACULTY

School	Subject group
School for Curriculum-based studies	<ul style="list-style-type: none"> ○ African Languages for Education ○ Afrikaans for Education ○ Arts and Culture for Education ○ Computer Science for Education ○ Economics and Business Sciences for Education ○ English for Education ○ Geography, History and Social Sciences for Education ○ Natural Sciences for Education ○ Mathematics for Education ○ Technology for Education ○ Training and Development
School of Education	<ul style="list-style-type: none"> ○ Curriculum studies ○ Movement Science ○ Foundation Phase ○ Life Orientation ○ Comparative Education and Teaching Theory ○ Educational Psychology and Learner Support ○ Education Management and Leadership ○ Education Law
School of Continuing Teacher Education	<ul style="list-style-type: none"> ○ African Languages for Education ○ Afrikaans for Education ○ Computer Science for Education ○ English for Education ○ Geography, History and Social Sciences for Education ○ Natural Sciences for Education ○ Mathematics for Education ○ Technology for Education ○ Curriculum studies ○ Movement Science ○ Foundation Phase ○ Life Orientation ○ Comparative Education and Teaching Theory ○ Educational Psychology and Learner Support ○ Education Management and Leadership ○ Education Law

OP.1.7 QUALIFICATIONS, PROGRAMMES AND CURRICULA

The University has the authority to confer the following degrees, certificates and diplomas offered by the Faculty of Education Sciences:

- Advanced Certificate in Education (ACE)
- National Professional Diploma in Education (NPDE)
- Bachelor of Education (BEd)
- Postgraduate Certificate in Education (PGCE)

- Bachelor of Education (Honours) (BEdHons)
- Master of Education (MEd)
- Doctor of Philosophy (PhD)

POST GRADUATE CERTIFICATE				
QUALIFICATION	PROGRAMME AND CODE	CURRICULUM AND CODE	MODE OF DELIVERY	NQF - LEVEL
Post-Graduate Certificate in Education (PGCE)	Senior and Further Education and Training Phase (Grade 7-12): 424 107	See 1.8.4 O160P	Full-time SBET	6 pending 7

OP.1.8 RULES FOR THE POST GRADUATE CERTIFICATE IN EDUCATION (PGCE)

POST GRADUATE CERTIFICATE IN EDUCATION (PGCE)

1. The PGCE serves as a professional 'capping' qualification for candidates who have completed an appropriate 360 or 480 credits Bachelor's degree and would like to join the education profession.
2. Students, who obtained this qualification with a focused vision on classroom practice, will be able to fulfil all the contextual roles and competencies of an effective educator.
3. With this certificate an educator can teach from Grade 7 to Grade 12.

OP.1.8.1 Duration (minimum and maximum duration)

The minimum duration of the studies is one (1) year and the maximum duration is two (2) years.

OP.1.8.2 Admission requirements for the qualification

A first university degree with 2 recognised school subjects or a recognised qualification that amounts to 360 credits at NQF level 6 and includes at least 2 recognised learning areas and/or school subjects as listed in 1.8.3.

Students must also be able to take two (2) methodologies in order to obtain the qualification. The curriculum of the degree may be structured in one of the following ways:

- a) Recognised school subject/learning area at level 3 + recognised school subject/learning area at level 1;
 - b) Recognised school subject/learning area at level 2 + recognised school subject/learning area at level 2;
 - c) Recognised school subject/learning area at level 2 + recognised school subject/learning area at level 1 + recognised school subject / learning area at level 1. In the case of a language, it is recommended that the candidate has at least completed level 2.
 - d) In the case of academic subjects already passed for a prior qualification students must take the subject in which he/she obtained the highest qualification.
- A student who included only Botany, Zoology or Physiology (one at least as main subject) and no other school subject in his undergraduate course will receive full recognition for his/her degree and the PGCE with Methodology of Life Sciences and Methodology of the Learning Area Natural Sciences. The student must register for LIFD511 and LAND521 as well as LAND411 and ADSD521. (Students who only have Physiology or Botany or Zoology are provisionally admitted to the PGCE until they passed two (2) additional modules, namely LIFE 311 and LIFE 121.

- A student who wants to take Life Sciences as methodology may present the following subjects under condition that Botany and Zoology was passed on level 1: Microbiology, Biochemics and Physiology.
- A student who included only Physics and Chemistry (one at least as main subject) and no other school subject in his/her undergraduate course will receive full recognition for this degree and the PGCE with Methodology of Physical Sciences and the Methodology of Learning Area Natural Sciences. The student must register for PHSD511 and LAND 521, as well as LAND411 and ADSD521.
- A student who wants to take the Methodology of Mathematics must have completed Mathematics on level 2 or otherwise Mathematics on level 1 with one of the following on level 2: Statistics, Mathematical Statistics, Applied Mathematics and Financial Mathematics. A student with only Mathematics as main subject must register for MATD511, MATD 521 as well as MATD411 and ADSD521.
- A student who wants to take the Methodology of Life Orientation must have two of the following subjects on degree level: Sociology, Psychology, Political Studies, Human Movement Science, Labour -and Industrial studies, Human Rights and Ethics and Nutrition. The student must already have a second school subject on degree level for the second methodology.
- A student is not allowed to take MOVD511 and LLOD511 together. If one of the abovementioned methodologies is taken, a student must also take another second methodology. The second semester modules for both MOVD511 and LLOD511 is LLOD521.
- A student who wants to take the Methodology of any language must have completed it on level 2.
- Students who have as yet not completed their first degree may be admitted by way of exception. They have to make a special application to the Director for this admission.

Remark:

1. The PM 40 % indicates participation marks of 40 % during the semester.
2. Students in possession of B.Mus and BA Music and Society take LAAD511 and LAAD521 and ADSD521. These students receive exemption for Music subject methodology (MSVD511) on the grounds of modules already passed in B.Mus and BA Music and Society

OP.1.8.3 List of modules

Module code	Descriptive name	Prerequisites	Credits
ACCD511	Accounting Methodology	Accounting level 1	12
ADSD521	Additional subject methodology: Creativity for Educators		12
AFRD511	Afrikaansmetodiek	Afrikaans level 2	12
AFRD521	Afrikaansmetodiek	Afrikaans level 2	12
ARTD511	Art Methodology	Art History level 1/Visual art level 1	12
BSTD511	Business Studies Methodology	Business Management level 1	12
CATD511	Computer Application Technology Methodology		12
CTED521	Civil Technology Methodology	TTED511	12
COMF411	Computers in Education		8
ECOD511	Economics Methodology	Economics level 1	12

EDCC511	Education Theory		8
EDCC512	Assessment		8
EDCC513	Professional Studies		8
EDCC521	Educational Psychology		12
EDCC522	Education Law, Systems and Administration		12
EDCC523	Professional Studies		8
EGDD511	Engineering Graphics and Design Methodology		12
EGDD521	Engineering Graphics and Design Methodology		12
ENGD511	English Methodology	English level 2	12
ENGD521	English Methodology	English level 2	12
ETED521	Electrical Technology Methodology	TTED511	12
GEOD511	Geography Methodology	Geography level 1	12
HISD511	History Methodology	History level 1	12
INTD511	Information Technology Methodology	Information technology level 1	12
LAAD511	Learning Area Arts and Culture Methodology		12
LAAD521	Learning Area Arts and Culture Methodology		12
LABD521	Learning Area Economic and Management Sciences Methodology		12
LAND521	Learning Area Natural Sciences Methodology		12
LASD521	Learning Area Social Sciences Methodology		12
LIFD511	Life Sciences Methodology	Students who only have Physiology or Botany or Zoology as a major subject are provisionally admitted to the PGCE until they passed two (2) additional modules, namely LIFE 311 and LIFE 121.	12
LIFF521	Life Skills		12
LLOD511	Learning Area Life Orientation Methodology	Physiology+Movement Sciences+Sociology on level 2 (see further requirements under 1.8)	12
LLOD521	Learning Area Life Orientation Methodology		12
MATD511	Mathematics Methodology	Mathematics level 2 (see 1.8)	12
MATD521	Mathematics Methodology	Mathematics level 2	12
MOVD511	Movement Sciences Methodology	Only Movement Sciences as main subject	12
MSVD511	Music Methodology	B.Mus	12
MTED521	Mechanical Technology Methodology	TTED511	12
PHSD511	Physical Sciences Methodology	Physics + Chemics level 1	12
RSVD511	Religion Studies Methodology	Any religion on level 1, Social Anthropology	12
SEMD511	Setswana Methodology (Mother Tongue)	Setswana level 2	12
SEMD521	Setswana Methodology (Mother Tongue)	Setswana level 2	12
SEND511	Setswana Methodology (Non Mother Tongue)	Setswana level 2	12

SEND521	Setswana Methodology (Non Mother Tongue)	Setswana level 2	12
TECD521	Technology Methodology		12
TGNO511	Technology		8
TGNO521	Technology		8
TRVD511	Tourism Methodology	Tourism level 1	12
TTED511	FET Technology Methodology		12
VWVD511	Consumer Sciences Methodology	B.Sc Consumer Sciences	12
*ZOND511	Zulu Methodology	Zulu level 2	12
*ZOND521	Zulu Methodology	Zulu level 2	12

* Will not be presented in 2012

OP.1.8.4 Curriculum: O160P – PGCE Senior & Further education and training phase

OP.1.8.4.1 Curriculum outcomes

After completion of the programme students should be able to:

- develop and demonstrate a deep knowledge and understanding of education theory and practice
- integrate education theory and practice with applied competence
- demonstrate and assess the knowledge base that underpins the planning, development and implementation of learning programmes in the Senior and FET phases and act as assessor and learning facilitator;
- develop and demonstrate skills, attitudes and values to become responsible, independent and contributing members of the professional educational community in a diverse and changing national and international context.
- develop and demonstrate critical, creative and reflective problem solving skills within educational and societal context

OP.1.8.4.2 Compilation of curriculum: O160P: Post-Graduate Certificate in Education

A student compiles his/her curriculum from the compulsory modules and a selection of two methodologies from the list of methodologies.

First semester	
Module code	Cr
Fundamental modules	
COMF411	8
TGNO511	8
Core modules	
EDCC511	8
EDCC512	8
EDCC513	8
TWO of the following methodologies	
ACCD511	12
AFRD511	12
ARTD511	12
BSTD511	12
CATD511	12
ECOD511	12

Second semester	
Module code	Cr
Fundamental modules	
LIFF521	12
TGNO521	8
Core modules	
EDCC521	12
EDCC522	12
EDCC523	8
Choose two of the following	
AFTB521	2
ENTB521	
TWTB521	
SSTB521	
ZOTB521	
Continuation of the selected methodologies	
LABD521 or ADSD521	12
AFRD521	12
LAAD521	12
LABD521 or ADSD521	12
TECD521	12
LABD521 or ADSD521	12

EGDD511	12	EGDD521	12
ENGD511	12	ENG521	12
GEOD511	12	LASD521	12
HISD511	12	LASD521 or ADSD521	12
INTD511	12	TECD521	12
LAAD511	12	LAAD521	12
LIFD511	12	LAND521	12
LLOD511 or MOVD511	12	LLOD521	12
MATD511	12	MATD521	12
MSVD511	12	ADSD521	12
PHSD511	12	LAND521 or ADSD521	12
RSVD511	12	LLOD521 or ADSD521	12
SEMD511	12	SEMD521	12
SEND511	12	SEND521	12
TTED511	12	CTED521/ETED521/ MTED521	12
TRVD511	12	LABD521 of ADSD521	12
VWVD511	12	TECD521	12
ZOND511	12	ZOND521	12
Total 1st semester	64	Total 2nd semester	78
		Total for the Curriculum	142

OP.2 MODULE OUTCOMES

Module code: ACCD511	Semester 1	NQF-level: 6 pending 7
Title: Accounting Methodology		
Module outcomes: On completion of this module the student should be able to:		
<ul style="list-style-type: none"> • have a well-rounded and systematic knowledge base regarding lesson planning, learner programme development, teaching aids and teaching management of the methodologies of Accounting; • have an informed base of understanding of key terms, rules, concepts, established principles and theories regarding the presentation of Accounting; • be able to gather, organise, make a critical analysis and interpret information, to communicate information coherently and reliably, both individually or as part of a group; • be able to select information and develop the necessary presentation skills using appropriate technologies according to generally accepted accounting practice (GAAP). 		
Method of delivery: Full-time, SBET		
Methods of assessment: Continuous assessment 50 % 1x2 hour written examination 50 %		

Module code: ADSD521	Semester 2	NQF-level: 6 pending 7
Title: Additional Subject Methodology: Creativity for Educators		
Module outcomes: On completion of this module the student should be able to:		
<ul style="list-style-type: none"> • demonstrate a comprehensive and systematic knowledge of creative teaching; • demonstrate an instructive and analytical comprehension of principles and theories relating to creative teachers, learners and the classroom, of critical analysis, synthesis and the evaluation of quantitative and qualitative information in this regard; • professionally present academic information effectively, using relevant IT skills; • communicate coherently and reliably in individual or group situations; and • use the knowledge and skills acquired in this module to teach any subject creatively, effectively and according to ethically based standards and values within the Outcomes-based Education framework. 		
Method of delivery: Full-time, SBET		
Methods of assessment: Continuous assessment 50 % 1x2 hour written examination 50 %		

Modulekode: AFRD511	Semester 1	NKR-vlak: 6 hangende 7
Titel: Afrikaansmetodiek		
Module uitkomst: Na voltooiing van die module moet die student in staat wees om: <ul style="list-style-type: none"> leermateriaal en geïntegreerde leerderaktiwiteite te kan saamstel om huistaal- en addisionele taal leerders te begelei in die bereiking van gestelde leeruitkomst; om gepaste assesseringsvorme, deur middel waarvan leerders in graad 7-12 se voldoening aan bepaalde assesseringstandaarde gemeet kan word, te kan implementeer; verworwe kennis oor die interpretasie en implementering van die NKV te kan gebruik om geïntegreerde lesse saam te stel; en om die voorskrifte van relevante departementele dokumente in breë trekke in ag te neem by die uitvoering van portefeulje-opdragte oor verskillende fasette van die onderrig van Afrikaans. 		
Metode van aflewering: Voltyds, SBO		
Assesseringsmetodes: Deurlopende assessering 50 1x3 uur geskrewe eksamen 50 %		

Modulekode: AFRD521	Semester 2	NKR-vlak: 6 hangende 7
Titel: Afrikaansmetodiek		
Module uitkomst: Na voltooiing van die module moet die student in staat wees om: <ul style="list-style-type: none"> met insig en in fynere besonderhede uitvoering te gee aan die voorskrifte van relevante departementele dokumente wanneer geïntegreerde lesse vir leerders in die Senior Fase saamgestel word én wanneer verslag gedoen word van leerdervordering; departementele voorskrifte ten opsigte van die samestelling van werkskedules, assesseringsprogramme en lesbeplanning vir die onderrig van Afrikaans aan leerders in Gr. 7-12 te kan uitvoer; en verskillende handboeke en ander soorte leermateriaal te kan beoordeel ten opsigte van die geskiktheid daarvan vir bepaalde leerdergroepe en bepaalde onderrigsituasies. 		
Metode van aflewering: Voltyds, SBO		
Assesseringsmetodes: Deurlopende assessering 50 1x3 uur geskrewe eksamen 50 %		

Module code: ARTD511	Semester 1	NQF-level: 6 pending 7
Title: Art Methodology		
Module outcomes: On completion of this module the student should be able to: <ul style="list-style-type: none"> prove that he/she has reached a broad and significant knowledge of and insight into art-theoretical aspects and subject during the completion of his/her degree; apply this knowledge and insight to all areas of art history and theory, in a teaching and learning environment in a critical, sensible and integrated way, in both the Senior Phase/FET and the learning area Arts and Culture. critically evaluate and analyse different models of art education, and apply these models in a competent and independent way in order to contribute to the comprehension and enjoyment of the subject (Micro-lessons, class presentations and practical teaching); prove that he/she has reached an advanced level of technical and practical skills and knowledge, and that he/she can apply this knowledge to the advantage of the practical assignments and products of learners, and also prove that he/she can plan and manage such tasks within a realistic time span, using available space and materials within the context of a teaching/learning situation in the Senior Phase; show an ability to apply the specific didactical details of Art (Senior Phase) in a lesson, and to prove an ability to plan and use integrated and relevant components of Art in the FET/Senior Phase and to use it within the context of the NCS (Class presentations, assignments, exams, micro-lessons and practical teaching). evaluate art works, theories and models of art analysis, according to a sound value system, taking into account the sensitivity of certain components of art, cultural differences and actualities; proving a capacity and competency to choose subject content and lessons based on ethical and responsible behaviour, in Senior Phase/FET as well as learning area Arts and Culture. prove that he/she has a well-established outlook on life and on the world that will be reflected in their ability to apply an inclusive and integrated method of art teaching within a culturally and linguistically diverse education system (micro-lessons, practical teaching, class presentations, exams, research and assignments). 		
Method of delivery: Full-time, SBET		
Methods of assessment: Continuous assessment 50 % 1x3 hour written examination 50 %		

Module code: BSTD511	Semester 1	NQF-level: 6 pending 7
Title: Business Studies Methodology		
Module outcomes: On completion of this module the student should be able to:		
<ul style="list-style-type: none"> • demonstrate a comprehensive and systematic knowledge base of the National Curriculum Statement applicable to Business Studies in the FET phase, teacher portfolios, learning programmes and assessment; • identify themes relevant to the National Curriculum Statement applicable to Business Studies in the FET phase and plan activities supporting the coherent understanding of concepts, ideas, theories, principles and rules; • use unknown and abstract information in this regard by using graphs and theory driven arguments; effectively use IT skills to collect, organise, critically analyse and to interpret; • demonstrate problem-solving abilities to plan and present lessons for specific application to Business Studies, using appropriate technologies, unknown and abstract information, graphs and theory driven arguments and IT skills to collect, organise, critically analyse and to interpret, giving evidence of theoretical underpinning; and • effectively communicate Business Studies didactical aspects ethically, coherently and reliably to learners in the classroom situation by using individual or group methods. 		
Method of delivery: Full-time, SBET		
Methods of assessment:		
Continuous assessment 50 %		
1x3hour written examination 50 %		

Module code: CATD511	Semester 1	NQF-level: 6 pending 7
Title: Computer Application Technology Methodology		
Module outcomes: On completion of this module the student should be able to:		
<ul style="list-style-type: none"> • demonstrate comprehensive and systematic knowledge of appropriate policy documents of Computer Application Technology in the FET phase; • demonstrate profound practical skills in the planning, presentation and assessment of both theoretical and practical CAT lessons; • demonstrate the ability to facilitate teaching and learning OBE Computer Application Technology in the FET phase; and • demonstrate and evaluate the ethical use of different learning material for CAT. 		
Method of delivery: Full-time, SBET		
Methods of assessment:		
Continuous assessment 50 %		
1x3hour written examination 50 %		

Module code: CTED521	Semester 2	NQF-level: 6 pending 7
Title: Civil Technology Methodology		
Module outcomes: On completion of this module the student should be able to:		
<ul style="list-style-type: none"> • demonstrate knowledge and understanding of the safety aspects applicable in the Civil technology class room, workshop and on site visits during practical sessions • select and apply appropriate teaching and learning practices for the Civil technology classroom in a FET environment • complete a Civil technology educational project by selecting and using appropriate sources of information and communication 		
Method of delivery: Full-time, SBET		
Methods of assessment:		
Continuous assessment 50 %		
1x3hour written examination 50 %		

Module code: COMF411	Semester 1	NQF-level: 6 pending 7
Title: Computers in Education		
Module outcomes: On completion of this module the student should be able to:		
<ul style="list-style-type: none"> • demonstrate a sound knowledge of e-Education and the Policy on e-Education; • demonstrate knowledge and practical skills of ICT integration in schools; • demonstrate profound problem-solving abilities to plan computer-integrated lessons; and • demonstrate and evaluate ethical and moral aspects regarding the use of computers in education. 		
Method of delivery: Full-time, SBET		
Methods of assessment:		
Continuous assessment 50 %		
1x2hour written examination 50 %		

Module code: ECOD511	Semester 1	NQF-level: 6 pending 7
Title: Economics Methodology		
Module outcomes: On completion of this module the student should be able to:		
<ul style="list-style-type: none"> illustrate and apply comprehensive and systematic knowledge of the National Curriculum Statement and other related educational policy documents for grades 10-12 and display an informed and critical understanding of the principles and theories with regard to classroom management, creative teaching and active learning in the Economics classroom in the context of postgraduate education; execute critical analyses, syntheses and evaluations of quantitative and qualitative information with regard to classroom administration, classroom organisation and record-keeping; effectively present academically professional information with regard to assessment of Economics teaching, as well as plan and prepare Economics lessons using his/her IT-skills and communicate coherently and creditably as an individual or as part of a group; and use the knowledge and skills mastered in this module effectively to present the subject Economics to grade 10-12 learners using the Outcomes-based Educational approach and implement norms and values prescribed by the Education Department. 		
Method of delivery: Full-time, SBET		
Methods of assessment:		
Continuous assessment 50 % 1x3hour written examination 50 %		
Module code: EDCC511	Semester 1	NQF-level: 6 pending 7
Title: Education Theory		
Module outcomes: On completion of this module the student should be able to:		
<ul style="list-style-type: none"> develop a broad understanding of the range of education theories, ideas and concepts that mark the current social science and educational landscape; develop a basic level of competence to apply the major education theories, ideas and concepts within their future educational practices as professional educators working in various contexts (schools, clinics, colleges, universities, parastatals, NGOs, developmental organisations and government); develop an ability to apply theoretical understanding to the conduct of basic research in education and to extend their theoretical insights based on the results of empirical inquiry. 		
Method of delivery: Full-time, SBET		
Methods of assessment:		
Continuous assessment 50 % 1x2hour written examination 50 %		
Module code: EDCC512	Semester 1	NQF-level: 6 pending 7
Title: Assessment		
Module outcomes: On completion of this module the student should be able to:		
<ul style="list-style-type: none"> demonstrate an understanding of outcomes-based assessment theoretical underpinning; demonstrate understanding and application of integrated assessment; demonstrate understanding of inclusively mainstream curriculum and the ordinary classroom environment; demonstrate an ability to plan for teaching, learning and assessment within an OBE approach; demonstrate the ability to conduct outcomes-based assessment; demonstrate an understanding and application of recording, recordkeeping and reporting within an OBE approach. demonstrate understanding and application of quality assurance of assessment 		
Method of delivery: Full-time, SBET		
Methods of assessment:		
Continuous assessment 50 % Portfolio assessment 50 %		
Module code: EDCC513	Semester 1	NQF-level: 6 pending 7
Title: Professional Studies		
Module outcomes: On completion of this module the student should be able to:		
<ul style="list-style-type: none"> demonstrate fundamental knowledge regarding the theoretical underpinnings and principles of an outcomes-based curriculum; identify and explain the components of an outcomes-based curriculum cycle; interpret the outcomes-based National Curriculum Statement and other related policies; design a learning programme, work schedule and lesson plan using OBE principles; demonstrate fundamental knowledge and skills in the selection, planning and implementation of direct and indirect teaching strategies and related instructional skills and teaching methods; develop his/her own strategic teaching-learning approach; develop and manage professional portfolios; apply appropriate knowledge, skills and attitudes in teaching practice. 		
Method of delivery: Full-time, SBET		
Methods of assessment:		
Continuous assessment 50 % 1x2 hour written examination 50 %		

Module code: EDCC521	Semester 2	NQF-level: 6 pending 7
Title: Educational Psychology		
Module outcomes: On completion of this module the student should be able to:		
<ul style="list-style-type: none"> • demonstrate fundamental knowledge of the theoretical underpinnings of educational and community psychology as well as the ecosystemic perspective; • act as an agent of change by integrating the theoretical underpinnings of educational and community psychology as well as the ecosystemic perspective in their education practice; • demonstrate well-rounded (fundamental and in-depth) knowledge of health promotion in diverse educational settings; • demonstrate fundamental knowledge of Inclusive Education and integrate this knowledge to create environments that value all learners; • understand the learner as a developing person from the ecosystemic perspective; • critically reflect on interpersonal dynamics in educational settings 		
Method of delivery: Full-time, SBET		
Methods of assessment:		
Continuous assessment 50 %		
1x3 hour written examination 50 %		

Module code: EDCC522	Semester 2	NQF-level: 6 pending 7
Title: Education Law, Systems and Administration		
Module outcomes: On completion of this module the student should be able to:		
<ul style="list-style-type: none"> • contribute to quality education in a diverse community; • have a deep knowledge and understanding of the nature and aims of the South African education system; • function within this education system to the advantage of the South African community and to contribute to the solution of challenges; • have the ability to integrate education management theory and practice to develop professional classroom management skills in a diverse and changing national and international context; • demonstrate knowledge and understanding of education law principles, and the ability to interpret and apply legislation and policy correctly in order to become responsible, independent and a contributing member of the professional education community; • have the ability to assess external influences on the education system and the classroom in order to develop critical, creative and reflective problem-solving skills within an educational and societal context by assessing external influences on the education system and the classroom. 		
Method of delivery: Full-time, SBET		
Methods of assessment:		
Continuous assessment 50 %		
1x3 hour written examination 50 %		

Module code: EDCC523	Semester 2	NQF-level: 6 pending 7
Title: Professional Studies		
Module outcomes: On completion of this module the student should be able to:		
<ul style="list-style-type: none"> • apply theoretical knowledge, practical skills and the required attitudes in teaching practice; • demonstrate knowledge of and insight into ethical aspects of the teaching profession and the SACE Code of Conduct; • demonstrate knowledge and understanding of the complexity of classroom discipline; and • identify, make, integrate and evaluate media in the teaching-learning situation. 		
Method of delivery: Full-time, SBET		
Methods of assessment:		
Continuous assessment 30 %		
* Work related training 40 %		
Theoretical examination 30 %		
* It is a prerequisite that a student must meet with all the requirements to pass work integrated learning		

Module code: EGDD511	Semester 1	NQF-level: 6 pending 7
Title: Engineering Graphics and Design Methodology		
Module outcomes: On completion of this module the student should be able to:		
<ul style="list-style-type: none"> • have sound knowledge regarding the outcomes of Engineering Graphics and Design according to the NQF; • possess the ability to apply the three planning phases of OBE in the class situation; • have sound knowledge to present the Turbo CAD Drawing programme as a presentation method in Engineering Graphics and Design; and • apply acquired Turbo CAD skills in his/her knowledge of Engineering Graphics and Design in the beginning phases for lessons and selected preparation for classroom activities. 		
Method of delivery: Full-time, SBET		
Methods of assessment:		
Continuous assessment 50 %		
1x3 hour written examination 50 %		

Module code: EGDD521	Semester 2	NQF-level: 6 pending 7
Title: Engineering Graphics and Design Methodology		
Module outcomes: On completion of this module the student should be able to:		
<ul style="list-style-type: none"> • have sound knowledge of the Solid Works Computer Aided Drawing programme for use in classroom practice in Engineering Graphics and Design as a school subject; • create parts, assemblies and sketches using Solid Works; • use the skills acquired in Solid Works by didactically presenting Solid Works in Engineering Graphics and Design; • prepare lessons and assess selected classroom activities; and • compare a CAD programme with a parametric CAD programme. 		
Method of delivery: Full-time, SBET		
Methods of assessment:		
Continuous assessment 50 %		
1x3 hour written examination 50 %		
Module code: ENGD511	Semester 1	NQF-level: 6 pending 7
Title: English Methodology		
Module outcomes: On completion of this module the student should be able to:		
<ul style="list-style-type: none"> • apply OBE principles (outcome of the generic module EDCC512) in the different phases at school level for teaching English and to interpret learning outcomes for the outcomes of each phase; demonstrate systematic and comprehensive skills in the planning and execution of English lessons, integration with other learning areas and interpretation of the NCS; • demonstrate sophisticated competence as educator and in the selection of appropriate learning material and teaching strategies for all phases; and • demonstrate refined and cultivated values regarding the English language teaching profession, and showing responsibility towards learners and the community. 		
Method of delivery: Full-time, SBET		
Methods of assessment:		
Continuous assessment 50 %		
1x3 hour written examination 50 %		
Module code: ENGD521	Semester 2	NQF-level: 6 pending 7
Title: English Methodology		
Module outcomes: On completion of this module the student should be able to:		
<ul style="list-style-type: none"> • demonstrate comprehensive knowledge of principles regarding the planning of lessons for teaching of English First Additional Language for Senior and FET Phases; • demonstrate systematic and comprehensive skills in the planning and execution of English lessons and learning programmes; integration of other subjects; interpretation of the NCS with regard to the learning outcomes and assessment standards set per grade in the Senior and FET Phases; • demonstrate sophisticated competence as educator and in the selection of appropriate learning material and teaching strategies for Senior and FET Phases; and • demonstrate refined and cultivated values regarding the English language teaching profession and show responsibility towards learners and the community. 		
Method of delivery: Full-time, SBET		
Methods of assessment:		
Continuous assessment 50 %		
1x3 hour written examination 50 %		
Module code: ETED521	Semester 2	NQF-level: 6 pending 7
Title: Electrical Technology methodology		
Module outcomes: On completion of this module the student should be able to:		
<ul style="list-style-type: none"> • demonstrate knowledge and understanding of the safety aspects applicable in the Electrical technology class room, workshop and on site visits during practical sessions • select and apply appropriate teaching and learning practices for the Electrical technology classroom in a FET environment • complete a Electrical technology educational project by selecting and using appropriate sources of information and communication 		
Method of delivery: Full-time, SBET		
Methods of assessment:		
Continuous assessment 50 %		
1x3hour written examination 50 %		

Module code: GEOD511	Semester 1	NQF-level: 6 pending 7
Title: Geography Methodology		
Module outcomes: On completion of this module the student should be able to:		
<ul style="list-style-type: none"> • have thorough and systematic knowledge to apply integrated, specific skills to design and effectively implement Geography learning experiences; • integrate theory and practical components with regard to curriculum development and act as a curriculum planner; • distinguish between the different teaching and learning approaches, styles, strategies, methods and techniques and to evaluate which of these are specifically the most effective learning content in Geography, and subsequently implementing these in a creative, logical and systematic manner; • demonstrate a thorough and systematic knowledge in applying integrated critical skills to ensure that correct summative and formative continuous assessment methods, techniques, testing and examining of Geography knowledge are correctly implemented; • analyse and implement the effective management and organisation of a Geography classroom, as well as the management and evaluation of the Geography department and personnel. 		
Method of delivery: Full-time, SBET		
Methods of assessment: Continuous assessment 50 % 1x3 hour written examination 50 %		

Module code: HISD511	Semester 1	NQF-level: 6 pending 7
Title: History Methodology		
Module outcomes: On completion of this module the student should be able to:		
<ul style="list-style-type: none"> • demonstrate an extended and systematic knowledge of the methodology of History in context of the National Curriculum Statement; • demonstrate extended skills in the analysis and synthesis of sources, the planning, design and implementation of various assessment strategies, the design of tests, examination papers and memoranda, as well as year planning (learning programmes and working schedules); • demonstrate competence in analysing and synthesising sources and the ability to plan practically, to design and implement various assessment strategies, to set tests, examination papers and memoranda as well as to conduct year planning (learner programmes and working schedules); and • demonstrate values of an ethically professional nature with regard to the interpretation of historical facts, which should always be true and contextual, in accordance with the Manifesto on Values, Education and Democracy. 		
Method of delivery: Full-time, SBET		
Methods of assessment: Continuous assessment 50 % 1x3 hour written examination 50 %		

Module code: INTD511	Semester 1	NQF-level: 6 pending 7
Title: Information Technology Methodology		
Module outcomes: On completion of this module the student should be able to:		
<ul style="list-style-type: none"> • demonstrate comprehensive knowledge of departmental policy documents on Information Technology in the FET phase, learning programmes and work schedules in applicable learning contexts, a variety of assessment techniques, methods and instruments applicable to Information Technology, as well as learning material for Information Technology and the organisation and administration of a computer centre; • demonstrate profound skills in analysing, interpreting and applying departmental policy documents to Information Technology in the FET phase, the planning, presentation and evaluation of both theoretical and practical lessons and the planning, implementation and evaluation of the principles of assessment in IT; • demonstrate the ability to implement and apply learning contexts and learning programmes to enhance effective learning in Information Technology and to develop applicable learning activities to measure learners' attainment of specific assessment standards; and • demonstrate the ability to evaluate and debate the profile of the ideal Information Technology facilitator. 		
Method of delivery: Full-time, SBET		
Methods of assessment: Continuous assessment 50 % 1x3 hour written examination 50 %		

Module code: LAAD511	Semester 1	NQF-level: 6 pending 7
Title: Learning Area Arts and Culture Methodology		
Module outcomes: On completion of this module the student should be able to:		
<ul style="list-style-type: none"> demonstrate a comprehensive and systematic knowledge base of teaching African Arts, didactic principles such as planning lessons, work schedules and a learning programme in the learning area Arts and Culture, teaching methods in the arts and assessment in the arts should be able to debate and motivate his/her preferences; independently evaluate the value of play in the learning area Arts and Culture and apply dance, drama, music and visual arts games in the learning area Arts and Culture; demonstrate an ability to identify, analyse and deal with complex and/or real world problems in applying practical teaching skills during micro-lessons and practical teaching in the learning area Arts and Culture; evaluate all opinions from one's own well-established worldview while teaching dance, drama, music and visual arts in the learning area Arts and Culture during micro-lessons and in practical teaching and be aware of social and ethical implications of applying knowledge in a certain context 		
Method of delivery: Full-time, SBET		
Methods of assessment: Continuous assessment 50 % 1x3 hour written examination 50 %		

Module code: LAAD521	Semester 2	NQF-level: 6 pending 7
Title: Learning Area Arts and Culture Methodology		
Module outcomes: On completion of this module the student should be able to:		
<ul style="list-style-type: none"> demonstrate a comprehensive and systematic knowledge base and a coherent and critical understanding of integrated arts education, multicultural arts education and inclusive arts education; critically analyse, synthesize and independently evaluate different models for integrating the Arts in the learning area Arts and Culture in the Senior Phase; demonstrate an ability to identify, analyse and deal with complex and/or real world problems in applying genres, which are inherently integrated, such as theatre and musical storytelling; evaluate all opinions from one's own well-established worldview while teaching inclusive arts education in the learning area Arts and Culture during micro-lessons and in practical teaching and be aware of social and ethical implications of applying knowledge in a certain context. 		
Method of delivery: Full-time, SBET		
Methods of assessment: Continuous assessment 50 % 1x3 hour written examination 50 %		

Module code: LABD521	Semester 2	NQF-level: 6 pending 7
Title: Learning Area Economic and Management Sciences Methodology		
Module outcomes: On completion of this module the student should be able to:		
<ul style="list-style-type: none"> demonstrate in-depth knowledge and understanding of the National Curriculum Statement applicable to the learning area Economic and Management Science in the Senior Phase with regards to key terms, rules, concepts, principles and theories in this regard; identify themes, plan activities supporting the coherent understanding of concepts, ideas, theories, principles and rules; use known and abstract information by using graphs and theory driven arguments, and effectively use IT skills to collect, organise, critically analyse and to interpret; demonstrate problem-solving abilities to plan and present lessons for specific application to EMS; effectively communicate EMS didactical aspects ethically, coherently and reliably to learners in the classroom situation by using individual or group methods; to plan, prepare and present a lesson according to the learning outcomes and assessment standards included in the National Curriculum statement for the senior phase. 		
Method of delivery: Full-time, SBET		
Methods of assessment: Continuous assessment 50 % 1x3 hour written examination 50 %		

Module code: LAND521	Semester 2	NQF-level: 6 pending 7
Title: Learning Area Natural Sciences Methodology		
Module outcomes: On completion of this module the student should be able to:		
<ul style="list-style-type: none"> demonstrate a comprehensive and systematic knowledge of the learning area Natural Science in the context of OBE concerning the following: facilitation in the Intermediate Phase, didactic principles of Natural Science education and the learning area Natural Sciences laboratory; identify and solve problems within the themes mentioned above, and plan activities which support a comprehensive understanding of ideas, theories, principles and rules within these themes; act in a problem-solving manner, in the planning and presentation of lessons and practical sessions within the context of the above-mentioned theoretical themes by using applicable technological resources; and demonstrate an appreciation of the contribution made by indigenous knowledge systems to educational issues concerning the above-mentioned content as well as demonstrate an ethical professional attitude and behaviour towards the content of Natural Science. 		
Method of delivery: Full-time, SBET		
Methods of assessment: Continuous assessment 50 % 1x2 hour written examination 50 %		

Module code: LASD521	Semester 2	NQF-level: 6 pending 7
Title: Learning Area Social Sciences Methodology		
Module outcomes: On completion of this module the student should be able to:		
<ul style="list-style-type: none"> understand the place of Social Sciences within OBE, and explain the place of History and Geography respectively within the Social Sciences; creatively apply a source-based approach in the learning area of Social Sciences; demonstrate knowledge and skills to implement a learning experience in Geography and History as sub-disciplines of Social Sciences and prove that they are skilled to use different teaching techniques, including information and communications technology in Social Sciences; demonstrate general teaching approaches in learning experiences of Social Sciences; explain the role of environmental value education in the school curriculum and indicate how this can contribute towards the moral development of individual learners and the community as well as the implementation of this in learning experiences of Social Sciences; creatively design suitable learning experiences, work sheets, assessment rubrics, tests/exams and memoranda regarding synoptic weather maps, topographic maps and aerial maps according to OBE and geographical didactical principles, as well as efficiently integrating other learning areas GEOD 511 and HISD 511. have the necessary knowledge and skills to construct and use graphs and diagrams in Social Sciences and integrate these in suitable themes in Social Sciences. 		
Method of delivery: Full-time, SBET		
Methods of assessment:		
Continuous assessment 50 %		
1x2 hour written examination 50 %		

Module code: LIFD511	Semester 1	NQF-level: 6 pending 7
Title: Life Sciences Methodology		
Module outcomes: On completion of this module the student should be able to:		
<ul style="list-style-type: none"> design a learning programme (subject framework, work schedule and lesson plans) and assessment instruments, apply laboratory techniques in Life Sciences and apply Environmental Education in Life Sciences; identify and solve problems within the above themes as well as plan activities that support the comprehensive understanding of ideas, theories and principles and rules within the themes; use problem-solving abilities regarding the planning and presentation of lessons and practical sessions within the context of the theoretical themes mentioned above by, amongst others, the use of suitable technological aids; display an appreciation for the contribution that indigenous knowledge systems play in pharmacology, bio-ethical issues in the above content and the ethical accountability towards the content of the Living Sciences. 		
Method of delivery: Full-time, SBET		
Methods of assessment:		
Continuous assessment 50 %		
1x3 hour written examination 50 %		

Module code: LIF521	Semester 2	NQF-level: 6 pending 7
Title: Life Skills		
Module outcomes: On completion of this module the student should be able to:		
<ul style="list-style-type: none"> demonstrate fundamental knowledge of issues relating to diversity, HIV/Aids, values and environmental education; demonstrate an understanding of appropriate skills, attitudes and values to contribute and maintain a healthy environment; integrate HIV/Aids, diversity, values and environmental education in the classroom. 		
Method of delivery: Full-time, SBET		
Methods of assessment:		
Continuous assessment 50 %		
1x3 hour written examination 50 %		

Module code: LLOD511	Semester 1	NQF-level: 6 pending 7
Title: Life Orientation Methodology		
Module outcomes: On completion of this module the student should be able to:		
<ul style="list-style-type: none"> demonstrate a comprehensive and systematic knowledge base of the terminology, rules, concepts, principles, theories, methods and strategies pertaining to the presentation of the four focus areas of Life Orientation in the FET phase. demonstrate an ability to interpret, convert, evaluate and apply essential theories, text, methods and strategies pertaining to the presentation of Life Orientation in the FET phase. demonstrate the ability to attained knowledge to solve unfamiliar, concrete and abstract problems pertaining to the planning and implementation of Life Orientation learning programmes for the FET Phase, using appropriate technological skills and giving evidence of theoretical underpinning; act ethically responsible and value-driven in all circumstances and forms of communication, written as well as orally, related to the planning and presentation of Life Orientation in the FET phase. 		
Method of delivery: Full-time, SBET		
Methods of assessment:		
Continuous assessment 50 %		
1x3 hour written examination 50 %		

Module code: LLOD521	Semester 2	NQF-level: 6 pending 7
Title: Learning Area Life Orientation Methodology		
Module outcomes: On completion of this module the student should be able to:		
<ul style="list-style-type: none"> • apply the outcomes for the Senior phase in such a way that it will encourage learner-centered and activity-based learning activities and to identify the critical as well as the specific outcomes for the grades you are being trained for and motivate the rationale for them; • motivate self-knowledge and career knowledge in the Senior phase as the two major components of career planning, indicate the process of obtaining information on job opportunities and evaluate these aspects in learners by means of questionnaires and self-help instruments; • apply and practice health promotion and personal well-being in the Senior phase so as to promote learner-centered and associated activity in the classroom situation; • evaluate inclusive teaching on the basis of personality traits and personal development aspects; • apply and practice physical development and physical education in the Senior phase so as to encourage learner-centered and associated activities in the classroom situation. 		
Method of delivery: Full-time, SBET		
Methods of assessment: Continuous assessment 50 % 1x3 hour written examination 50 %		

Module code: MATD511	Semester 1	NQF-level: 6 pending 7
Title: Mathematics Methodology		
Module outcomes: Upon completion of the module students must have to demonstrate comprehensive knowledge, insight and skills regarding		
the planning of powerful learning opportunities within the mathematics classroom, with specific reference to the following:		
<ul style="list-style-type: none"> • The learning and teaching of mathematics worldwide, and within the context of reform. • Assessment of, and for, the learning of mathematics. • The effective use of technology in the teaching and learning of school mathematics. • The value of mathematics in real life by presenting mathematics lessons and completing assignments. 		
Method of delivery: Full-time, SBET		
Methods of assessment: Continuous assessment 50 % 1x3 hour written examination 50 %		

Module code: MATD521	Semester 2	NQF-level: 6 pending 7
Title: Mathematics Methodology		
Module outcomes: On completion of this module the student should be able to:		
<ul style="list-style-type: none"> • apply conceptual and pedagogical knowledge, insight and skills regarding <ul style="list-style-type: none"> o the content and structure of the Mathematics Curriculum applicable to the Senior Phase and FET band; o the implementation of Mathematical Literacy as a compulsory subject in the FET band; o the effective teaching of mathematics in multilingual classrooms; o the value of mathematics in real life. 		
Method of delivery: Full-time, SBET		
Methods of assessment: Continuous assessment 50 % 1x3 hour written examination 50 %		

Module code: MOVD511	Semester 1	NQF-level: 6 pending 7
Title: Movement Science Methodology		
Module outcomes: On completion of this module the student should be able to:		
<ul style="list-style-type: none"> • demonstrate a well-rounded and systematic knowledge base of the terminology, rules, concepts, principles, and theories pertaining to the presentation of Movement Science within Life Orientation in the FET phase; • demonstrate an ability to interpret, convert, evaluate and apply essential theories and text pertaining to the presentation of Movement Science within Life Orientation in the FET phase; • demonstrate the ability to use the attained knowledge to solve well-defined but unfamiliar problems pertaining to the planning and implementation of Movement Science within Life Orientation learning programmes, work schedules, lessons, resources and assessment strategies for the FET phase, using appropriate technological skills and giving evidence of theoretical underpinning; • act ethically, responsibly and be value-driven in all circumstances and forms of communication, written as well as orally, related to the planning and presentation of Movement Science within Life Orientation in the FET phase. 		
Method of delivery: Full-time, SBET		
Methods of assessment: Continuous assessment 50 % 1x3 hour written examination 50 %		

Module code: MSVD511	Semester 1	NQF-level: 6 pending 7
Title: Music Methodology		
Module outcomes: On completion of this module the student should be able to:		
<ul style="list-style-type: none"> demonstrate a comprehensive and systematic knowledge base of the didactic principles concerning the facilitation of the following learning outcomes in Music (Gr 10-12): music performance (individually and in ensembles); improvisation, arrangement and composition; music literacy's and critical reflection on African and global musical processes, practices and products; independently evaluate and create different lesson plans, work schedules, learning programmes and evaluate and apply assessment practices in Music in the Further Education and Training Phase; demonstrate an ability to identify, analyse and deal with complex and/or real world problems in applying practical teaching skills during micro-lessons and practical teaching in Music in the Further Education and Training Phase; evaluate all opinions from your own well-established worldview while teaching Music (Gr 10-12) during micro-lessons and in practical teaching and be aware of social and ethical implications of applying knowledge in a certain context. 		
Method of delivery: Full-time, SBET		
Methods of assessment: Continuous assessment 50 % 1x3 hour written examination 50 %		
Module code: MTED521	Semester 2	NQF-level: 6 pending 7
Title: Mechanical Technology methodology		
Module outcomes: On completion of this module the student should be able to:		
<ul style="list-style-type: none"> demonstrate knowledge and understanding of the safety aspects applicable in the Mechanical technology class room, workshop and on site visits during practical sessions select and apply appropriate teaching and learning practices for the Mechanical technology classroom in a FET environment complete a Mechanical technology educational project by selecting and using appropriate sources of information and communication 		
Method of delivery: Full-time, SBET		
Methods of assessment: Continuous assessment 50 % 1x3hour written examination 50 %		
Module code: PHSD511	Semester 1	NQF-level: 6 pending 7
Title: Physical Sciences Methodology		
Module outcomes: On completion of this module the student should be able to:		
<ul style="list-style-type: none"> demonstrate the knowledge and skills they have acquired with regard to <ul style="list-style-type: none"> the integration of pedagogical content knowledge and physical sciences content knowledge, progression of content knowledge and process skills of Physical Science from grade 7 to 12, Nature of Science and its relationships to technology, society and the environment, learning theories and teaching strategies as implemented in Physical Sciences, assessment models in Physical sciences, and laboratory management. 		
Method of delivery: Full-time, SBET		
Methods of assessment: Continuous assessment 50 % 1x3 hour written examination 50 %		
Module code: RSVD511	Semester 1	NQF-level: 6 pending 7
Title: Religion Studies Methodology		
Module outcomes: On completion of this module the student should be able to:		
<ul style="list-style-type: none"> critically analyse, synthesise and evaluate the National Curriculum Statements for Religion Studies; compile and develop a teacher and learner portfolio; assess the learner's portfolio in support of professional development for the student and learners studying Religion Studies; apply various research methods and techniques to do research on religion as social phenomenon; and present findings in written and verbal format with the effective use of technology. 		
Method of delivery: Full-time, SBET		
Methods of assessment: Continuous assessment 50 % 1x2 hour written examination 50 %		
Module code: SEMD511	Semesetara 1	Tekanyo Ya NQF: 6 pending 7
Title: Setswana Methodology (Mother Tongue)		
Module outcomes: Kwa bkohutlong jwa mojulu o, tshwanets go:		
<ul style="list-style-type: none"> go supetsa mekgwa ya go ruta le go ithuta puo ya Seaforika jaaka leleme la nthla mo phapisoboruetlong; go supetsa kitso e e lotaganeng e e rulaganeng ya diteori tsa go ruta thutapuo le thutaditlhwangwa ka tiriso ya mekgwa ya OBE le PKB mo mephatong ya 4-6; 7-9; kgotsa 10-12; go supetsa bokgoni jwa go ruta thutapuo ka tiriso ya thutaditlhwangwa tsa Setswana; go supetsa kitso e e lotaganeng ya ditokomane tsa Lefapha la Thuto bogolosegolo tse di maleba le dithuto tsa Puo; go supetsa go thaloganya tiro le tiriso ya maemo a tekanyetso mo phapisoboruetlong ya Dipuo; go puo, jwa go akanya le go neela mabaka; go rulaganya maitemogelo a thuto le go a diragatsa; 		
Mokgwa Wa Go Ruta: Full-time, SBET		
Mekgwa Ya Go Tlathhoba: Tlathhobo e e tsweleng 50 % Diura tsa tlathhobo e e kwadiwang 1x2 hour ke 50 %		

Module code: SEMD521	Semesetara 2	Tekanyo Ya NQF: 6 pending 7
Title: Setswana Methodology (Mother Tongue)		
Module outcomes: Kwa bkohutlong jwa mojulu o, tshwanets go: <ul style="list-style-type: none"> • go tlhama ditiragatso tsa go ithuta go nonofisa bokgoni jwa puo mo dikgatong tse di farologaneng; • go supetsa kitso e e lotaganeng e e rulaganeng le go bopa lenaanethuto le sejulu ya tiro ya thuto ya Setswana ya mephato e e farologaneng; • go supetsa le go thalosa mekgwa e e farologaneng e e maleba ya tekanyetso ya thuto ya Puo; • go tlhama le go tshola direkoto tsa tekanyetso; • go go sekaseka le go anaanela ditokomane tsa Lefapha la thuto tse di maleba le thuto ya Dipuo; • go supetsa go thaloganya dikarolo tse supa tsa morutabana, bogolosegolo yo o rutang Dipuo. 		
Mokgwa Wa Go Ruita: Full-time, SBET		
Mekgwa Ya Go Tlhatlhoba: Tlhatlhobo e e tswelelang 50 % Diura tsa tlhatlhobo e e kwadiwang 1x2 hour ke 50 %		

Module code: SEND511	Semester 1	NQF-level: 6 pending 7
Title: Setswana Methodology (Non-Mother Tongue)		
Module outcomes: On completion of this module the student should be able to: <ul style="list-style-type: none"> • indicate knowledge of the learning area languages and also be aware of the aims and the content thereof; • know the approaches in teaching African Languages and have knowledge of the correct approach to be followed in teaching Setswana and provide proof of the subject knowledge of Setswana as elective module; • have knowledge in different methods in foreign language acquisition and know the different factors that influence them; • be acquainted with policy documents and manuals of the Department of Education and know how to use them; • acquire the ability to become a responsible teacher who has the ability to do thorough lesson planning and is able to present lessons accordingly; • have introductory knowledge in the planning of learning programmes, work schedules and complete lesson plans and assessment of Setswana as 2nd Additional Language and have proven subject knowledge of Setswana. 		
Method of delivery: Full-time, SBET		
Methods of assessment: Continuous assessment 50 % 1x2 hour written examination 50 %		

Module code: SEND521	Semester 2	NQF-level: 6 pending 7
Title: Setswana Methodology (Non-Mother Tongue)		
Module outcomes: On completion of this module the student should be able to: <ul style="list-style-type: none"> • have knowledge in the teaching methods of reading, listening, writing and speaking in the OBE Setswana Classroom; • teach language, reading and literature and be able to set tests, examinations and compile memoranda ; • show competence in preparing language and literature lessons and to present them in such a way that oral and reading skills also receive attention; • implement objective, trustworthy assessment of language, reading, oral and literature and also know how to remedy where needed; • show knowledge in administering a Setswana classroom and have knowledge of all the ways of recording that have to be done to compile learner profiles and assessment reports and know how to apply differentiation and integration; • know the requirements for teaching aids, language games and the possibilities of CAL, and • acquire information needed for planning educational excursions. 		
Method of delivery: Full-time, SBET		
Methods of assessment: Continuous assessment 50 % 1x2 hour written examination 50 %		

Module code: TECD521	Semester 2	NQF-level: 6 pending 7
Title: Learning Area Technology Methodology		
Module outcomes: On completion of this module the student should be able to: <ul style="list-style-type: none"> • demonstrate a fundamental knowledge of the NCS document with regard to the learning area Technology; apply interpretation and designing skills in the development and planning of learning programmes, work schedules and lesson planning; • show a comprehensive understanding of different teaching-learning and assessment strategies that are appropriate for the learning area Technology; • demonstrate an understanding of the nature of organising and managing a practical technology class room and workshop, including safety aspects relevant to practical technology tasks; • apply relevant knowledge and skills in the practical teaching of the learning area Technology. 		
Method of delivery: Full-time, SBET		
Methods of assessment: Continuous assessment 50 % 1x3 hour written examination 50 %		

Module code: TGN0511	Semester 1	NQF-level: 6 pending 7
Title: Technology		
Module outcomes: On completion of this module the student should be able to:		
<ul style="list-style-type: none"> • demonstrate problem-solving skills, critical and creative thinking during the application of the design process to technological problems and needs in real life; • demonstrate a fundamental understanding of, and the ability to apply appropriate technological knowledge, skills and values; • demonstrate a critical understanding and appreciation of the interrelationship of technology, society, economy and the environment ; • demonstrate the application of the attained knowledge and skills and fulfill the role of technology learning mediator. 		
Method of delivery: Full-time, SBET		
Methods of assessment:		
Continuous assessment 50 %		
1x2 hour written examination 50 %		
Module code: TGN0521	Semester 1	NQF-level: 6 pending 7
Title: Technology		
Module outcomes: On completion of this module the student should be able to:		
<ul style="list-style-type: none"> • demonstrate a basic knowledge of the learning area Technology in the South African School system; • demonstrate a comprehensive knowledge of all the three outcomes and assessment standards in the Senior Phase, including structures, systems and control and processing; • demonstrate the principles of outcomes-based assessment in the learning area Technology for the Senior Phase; • apply the problem-solving and creative approach to the learning area Technology and the unique methodology thereof in the Senior Phase. 		
Method of delivery: Full-time, SBET		
Methods of assessment:		
Continuous assessment 50 %		
1x2 hour written examination 50 %		
Module code: TRVD511	Semester 1	NQF-level: 6 pending 7
Title: Tourism Methodology		
Module outcomes: On completion of this module the student should be able to:		
<ul style="list-style-type: none"> • demonstrate knowledge of OBE principles; the content of the NCS Tourism; the interpretation of learning outcomes and assessment standards of Tourism in the FET phase; • demonstrate skills in the planning of lessons as part of the learning programme of Tourism, in developing learning and assessment activities; integration with other learning areas; interpretation of the NCS; • demonstrate competence in the selection of appropriate learning material and teaching strategies for the FET phase; in designing assessment activities in line with the assessment standards; • demonstrate ethical values and norms regarding the community, and demonstrate responsibility towards the environment and respect for cultural diversity. 		
Method of delivery: Full-time, SBET		
Methods of assessment:		
Continuous assessment 50 %		
1x3 hour written examination 50 %		
Module code: TTED511	Semester 1	NQF-level: 6 pending 7
Title: FET Technology Methodology		
Module outcomes: On completion of this module the student should be able to:		
<ul style="list-style-type: none"> • describe and explain the rationale of Technology teaching in schools as well as debating the realities confronting South African schools regarding the instruction of Technology in the FET phase; • demonstrate a well-grounded knowledge of the NQF of FET Technology in this phase; and • demonstrate the ability to do suitable planning in the FET Technology phase in accordance with the unique methodology of Technology with knowledge of the Technological process. 		
Method of delivery: Full-time, SBET		
Methods of assessment:		
Continuous assessment 50 %		
1x3 hour written examination 50 %		
Module code: VWVD511	Semester 1	NQF-level: 6 pending 7
Title: Consumer Sciences Methodology		
Module outcomes: On completion of this module the student should be able to:		
<ul style="list-style-type: none"> • demonstrate a fundamental knowledge of the NCS document with regard to Consumer Studies and Hospitality Studies; • apply interpretation and designing skills in the development and planning of learning programmes, work schedules and lesson planning; • show a comprehensive understanding of different teaching-learning and assessment strategies that are appropriate for consumer studies and hospitality studies; • demonstrate an understanding of the nature of organising and managing a practical class-room including safety aspects relevant to practical tasks; • apply relevant knowledge and skills in the practical teaching of Consumer Studies and Hospitality Studies. 		
Method of delivery: Full-time, SBET		
Methods of assessment:		
Continuous assessment 50 %		
1x3 hour written examination 50 %		

Module code: ZOND511	Semester 1	NQF-level: 6 pending 7
Title: Zulu Methodology		
Module outcomes: On completion of this module the student should be able to: <ul style="list-style-type: none"> • know the theory and practice of foreign language acquisition; • use the OBE Policy Document effectively for the LLC learning area; • know and understand OBE terminology; • know the various language assessment methods; • know all the OBE requirements for the LLC learning area; • master language skills and present and structure the learning experience; • organise and manage the isiZulu classroom; • know the different teaching media and teaching aids, and • know the theory of the production and usage of each. 		
Method of delivery: Full-time, SBET		
Methods of assessment: Continuous assessment 50 % 1x2 hour written examination 50 %		
NOT PRESENTED IN 2012		

Module code: ZOND521	Semester 2	NQF-level: 6 pending 7
Title: Zulu Methodology		
Module outcomes: On completion of this module the student should be able to: <ul style="list-style-type: none"> • apply and demonstrate knowledge and skills with regard to the theoretical work undertaken in ZOND511; • apply the OBE requirements to integrated teaching of Intermediate and Senior Phases; • collect, analyse and organise the necessary information for relevant use in the isiZulu classroom; • use different teaching media and teaching aids, and • know how to produce each of them. 		
Method of delivery: Full-time, SBET		
Methods of assessment: Continuous assessment 50 % 1x2 hour written examination 50 %		
NOT PRESENTED IN 2012		