



NORTH-WEST UNIVERSITY
YUNIBESITI YA BOKONE-BOPHIRIMA
NOORDWES-UNIVERSITEIT

®

It all starts here®

PROFILE

2017 // 2018

ON TRACK TOWARDS
BUILDING A BETTER FUTURE

THE BIGGER PICTURE

South African

HIGHER EDUCATION

landscape

26

Public higher education
institutions in SA

6

Comprehensive
universities

14

Conventional
universities

6

Universities of
technology

North-West University (NWU)
One of the conventional
universities in SA

Universities South Africa
Governing body for SA's
higher education institutions

CONTENTS

- 1 The bigger picture
- 2 The spirit of the North-West University
- 3 Our university
- 6 Our staff
- 8 Our management structure
- 9 Our academic offerings
- 16 Our students
- 23 Our research
- 27 Our innovation
- 28 Our sustainability and community impact
- 30 Our finances
- 31 Yunibesiti ya rona

(Please note that all 2017 figures used were provisional as final auditing was still in progress.)

THE SPIRIT OF THE NORTH-WEST UNIVERSITY

The spirit of the university is reflected in the way we unlock the future for people and enable them to make their dreams come true.

This spirit runs across all our activities and operations, from our academic offerings and research to our student body, community engagement and sports achievements. The “keys” we use to unlock the future for our stakeholders include:

- Our exceptional programmes (p10)
- Our distance learning capability (p11)
- Our entrepreneurial learning (p11)
- Our top research entities (p23)
- Our focus on internationalisation (p25)
- Our sporting excellence (p20)

Our logo

The interlocking links symbolise the unity of our university.



Our pay-off line

It all starts here
Dit begin alles hier
Gotlhe go simologa fano

OUR UNIVERSITY

A united institution

The NWU is committed to function as a unitary, integrated multi-campus university that will enable equity, redress and globally competitive teaching and research across all campuses.

Our dream

To be an internationally recognised university in Africa, distinguished for engaged scholarship, social responsiveness and an ethic of care.

Our strategy statement

To transform and position the NWU as a unitary institution of superior academic excellence, with a commitment to social justice.

Our purpose

To excel in innovative learning and teaching and cutting-edge research, thereby benefitting society through knowledge.



OUR CAMPUSES

Our core activities, teaching-learning and research, are intertwined with community engagement and innovation on our three campuses which serve both distance and contact students.



Our values

The NWU will foster engaged and caring staff and students and embed the following foundational values, based on the constitutional values of human dignity, equality and freedom:

- Ethics in all endeavours
- Academic integrity
- Academic freedom and freedom of scientific research
- Responsibility, accountability, fairness and transparency
- Embracing diversity

Each campus has its unique characteristics

Mahikeng

The NWU's campus in Mahikeng, the capital of the North West Province, has an international ambience, with 425 students from 29 countries enrolled there in 2017.

It is the second largest of the NWU's three campuses, with 12 489 students enrolled in 2017. The campus's physical setting is peri-urban and some academic offerings have a rural development focus.

Potchefstroom

The campus in Potchefstroom, which is the largest and oldest NWU campus, had 49 777 students registered in 2017.

All full-time undergraduate classes are available in both Afrikaans and English, where there is a need for this, either via parallel medium or educational interpreting.

The campus accounts for the majority of the NWU's research output and National Research Foundation-rated researchers.

Vanderbijlpark

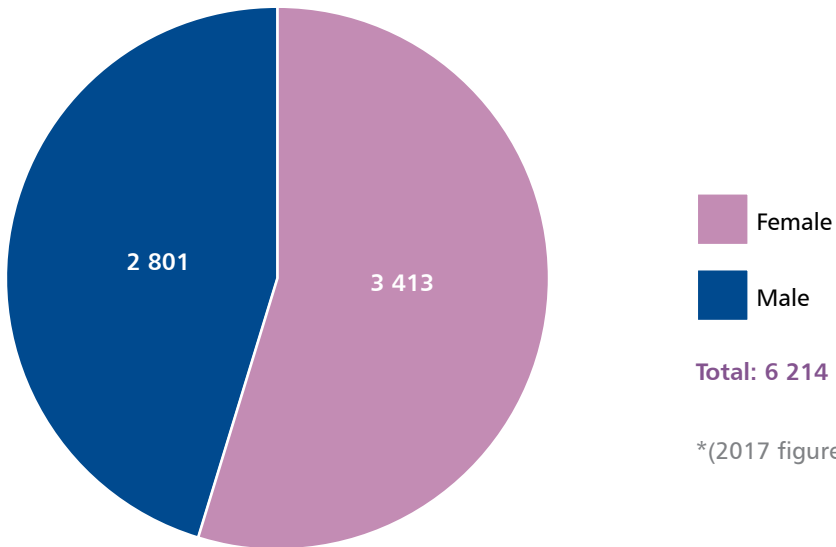
Situated in a proclaimed nature reserve on the banks of the Vaal River, the NWU's campus in Vanderbijlpark has a diverse student profile and unique environmental setting. Various species of game roam the grounds.

The campus, which had 7 838 registered students in 2017, contributes to the skills and knowledge of the Gauteng region and acts as a catalyst for economic growth.

(2017 figures not final)

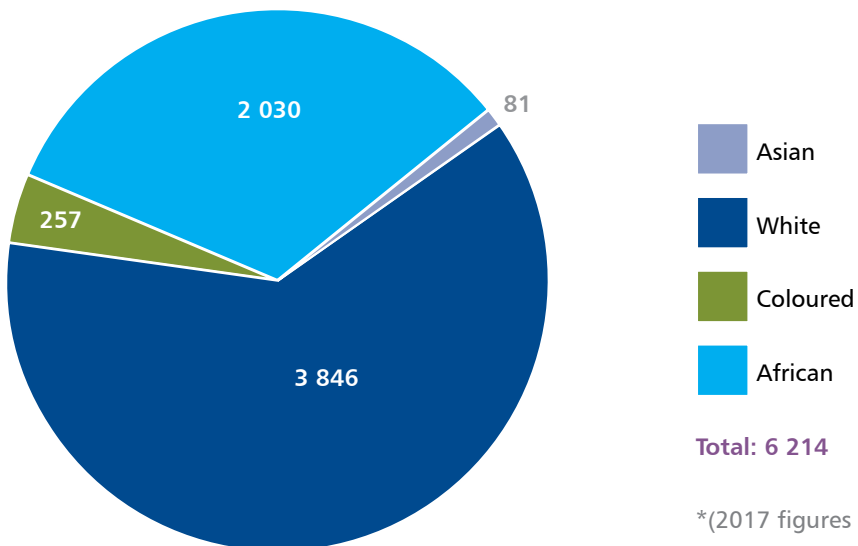
OUR STAFF

Gender composition of NWU staff (2017*)



*(2017 figures not final)

Racial composition of NWU staff (2017*)



*(2017 figures not final)

Our staff members shine

Our academics excel in their fields, winning awards and sharing their expertise in South Africa and abroad. Here are a few of the many accolades they have achieved:

National Research Foundation
(NRF) grants

National and international awards
for excellence in research

Involvement in prestigious
international research teams

Membership of national and
international advisory bodies

Editorships of national and
international journals

Top placements in national
and international competitions
and challenges

Best paper/poster/article awards at
international congresses

Chosen to represent SA/SADC
countries/Africa at international
conferences/bodies

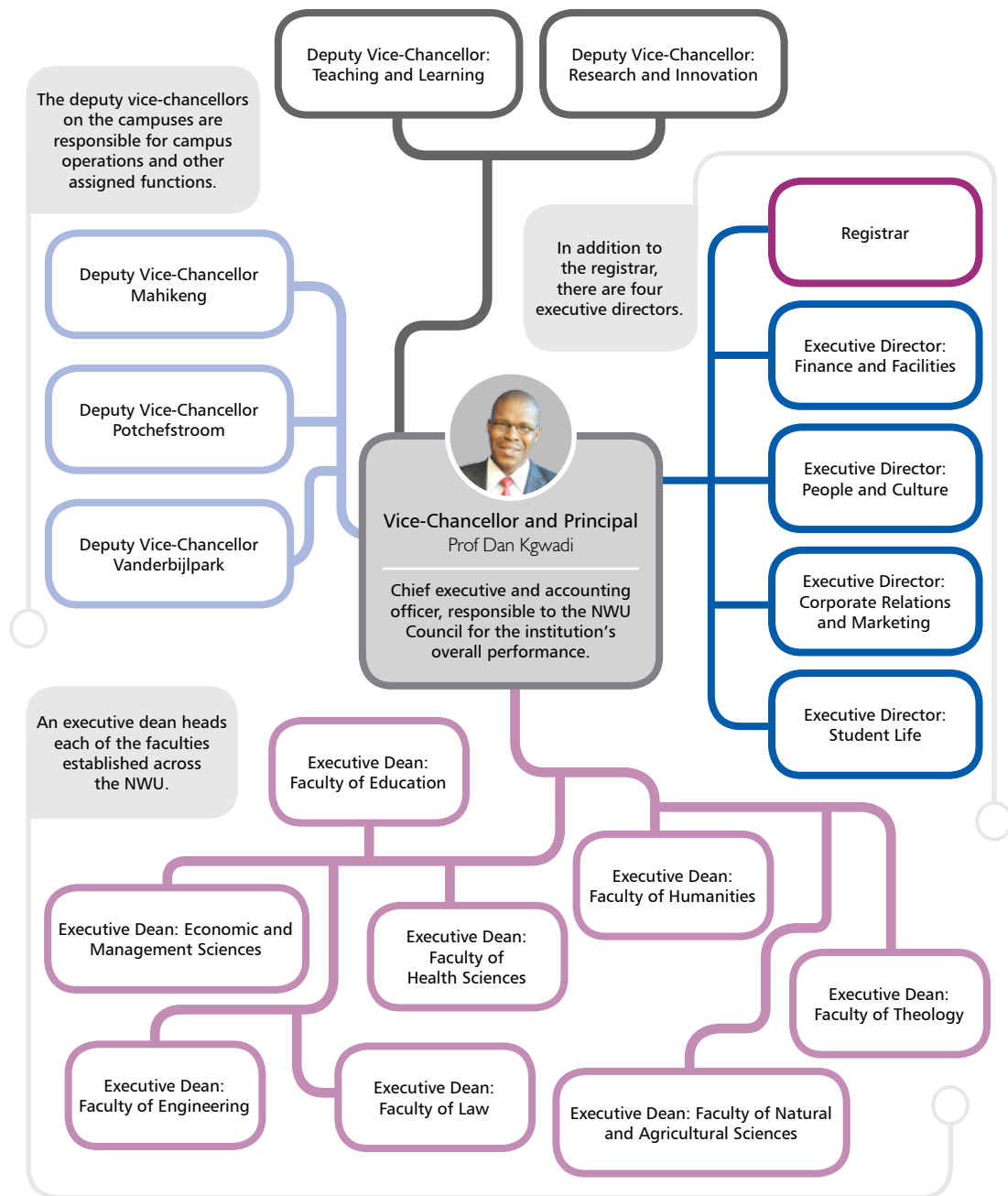
Research grants and fellowships from
international bodies/institutions

Serving as presidents/chairs and
executive/honorary members of
national and international bodies

Membership of the Academy of
Science of South Africa (ASSAf)

Medals and other awards from the
SA Academy of Science and Arts

OUR MANAGEMENT STRUCTURE



OUR ACADEMIC OFFERINGS

The NWU offers more than just an education: we offer people a place in the world.

Academically, students benefit from great choice and flexibility, enabling them to fulfil their full potential and start developing their careers.

Teaching-learning scoreboard

Students enrolled

2004 40 145 ▶ 2016 63 395
= 57,92% total growth

Qualifications awarded

2004 9 657 ▶ 2016 17 510
= 81,32% total growth

PhDs awarded

2004 87 ▶ 2016 238
= 174% total growth

Undergraduate pass rate

2004 75,2% ▶ 2016 86,16%

Pass rates and qualifications conferred from 2012 to 2016

	2012	2013	2014	2015	2016
Undergraduate pass rate	88,2%	85,1%	86,1%	85,1%	86,16%
Graduation rate	25%	25%	24,1%	24,3%	27,62%
Degrees and diplomas awarded	14 669	15 464	15 254	15 597	17 510
Master's degrees awarded	670	781	746	742	744
PhDs awarded	154	168	171	222	238

Exceptional programmes

The NWU qualification and programme mix has some unique offerings in the contact and/or distance mode that are not common to other South African universities. Here are a few examples.

Engineering

- PGDip (postgraduate diploma) in Energy Policy and another in Nuclear Science and Technology
- BEng in five different areas of specialisation

Law

- DPhil in Laws
- Two LLM streams (research or coursework) with 19 different programme specialisations, for instance LLM in Comparative Child Law
- MPhil in Environmental Governance Law and a Professional LLM in Criminal Law and Procedure

Theology

- MTh in Christian Ministry (research) with eight different programme foci
- BA in Pastoral Psychology, and BA and BAHons in Ancient Languages

Education Sciences

- Diploma in Grade R Teaching and an Advanced Diploma in Education in Special Needs Education
- BEdHons in Computer Applications Technology

Economic and Management Sciences

- PhDs in International Trade; Tax, and Forensic Practice
- MCom degrees in International Trade; Banking and Financial Risk Management, and Applied Risk Management
- BComHons in International Trade
- PGDip in Agricultural Economics
- BCom in Economic Sciences with four different programme specialisations
- BCom degrees in Forensic Accountancy; Chartered Accountancy; Management Accountancy; Financial Accountancy; Transport Economics and Logistics
- Short Learning Programme in Wildlife Management (attracts national and international participants)
- BAHons, BComHons, MA and MCom in Tourism Management

Human and Social Sciences

- MA in Medical Sociology; M in Indigenous Knowledge Systems; MSocSc (Master of Social Sciences) in Population Studies and Sustainable Development
- MA of Music in Musicology; Music Composition, and Music Performance

- PGDip in Population and Policy Analysis, and in Public Administration
- BAHons in Comparative African Languages and Literature; Language Technology, and Afrikaans Creative Writing
- Professional BAHons in Industrial and Organisational Psychology

Agricultural Sciences

- PhD in Animal Health
- MSc in Agricultural Extension and in Agricultural Economics
- BSc in Agriculture with four programme specialisations including Crop Science and Animal Health, registered with the South African Veterinary Council
- Diploma in Animal Science and another in Plant Science

Health

- PhD in Health Sciences with 12 different programme specialisations
- MHSc (Master of Health Sciences) in Transdisciplinary Health Promotion and another in Gerontology
- MSW in Forensic Practice
- MSc in Pharmaceutical Sciences, in Pharmacology and in Pharmacy Practice
- MA in Positive Psychology
- PGDip in Cosmetic Product Formulation, and in Pharmacological Principles of Drug Therapy
- BHSc in Occupational Hygiene

Natural Sciences

- MSc in Astrophysics and Space Science, in Environmental Sciences with five programme specialisations, in Actuarial Science registered with Certified Enterprise Risk Actuary (CERA), and in Business Mathematics and Informatics with three different programme specialisations
- Two new National Astrophysics and Space Science Programme (NASSP) nodes at the Centre for Space Research. This programme accepted its first intake of postgraduate students in 2016.
- BScHons in Environmental Sciences with specialisation in Waste Management
- BSc and BscHons in Actuarial Science and in Business Analytics

NWU School of Business and Governance: The school offers part-time qualifications and academic programmes on Saturday mornings in Afrikaans at the campus in Potchefstroom, Monday evenings in English at the Vanderbijlpark campus, and in English over selected weekends at the campus in Mahikeng. The MBA qualification is accredited by the Association of MBAs (AMBA).

Entrepreneurial learning

- As from 2018: academic programmes in entrepreneurship are included in the BCom in Management Sciences with Business Management, BCom in Management Sciences with Safety Management and the MBA.
- As from 2018: a module in problem solving for managers is part of the BCom in Management Sciences with Business Management, BSc IT and BSc Consumer Sciences.
- The Fundamental Engineering Application Programme (FEAP) focuses on real-life challenges for real clients in the community.

More than 60 different projects are undertaken each year to the benefit of communities.

- The bHive Enterprise Development Centre (EDC) has a short learning programme for female entrepreneurs, namely the Enterprising Women Programme. They also coordinate student-centred entrepreneurial learning opportunities such as the Young Entrepreneur Business Organisation (YEBO), CoachLab@Vaal (a postgraduate leadership and skills development programme), the Greenleadership programme (entrepreneurial training with a focus on "green businesses"), and Enactus.

Distance learning programmes

Over 27 000 students are enrolled at the NWU's Unit for Open Distance Learning (UODL). Currently more than 25 000 of these students are education students, but there are also students in nursing, theology and policing.

The UODL has 66 learning support centres throughout South Africa and Namibia where various NWU programmes are facilitated through open distance learning. There are 97 active examination centres across South Africa.



Unique language policy

In line with our policy of functional multilingualism, the NWU provides educational interpreting services. The main user is the NWU's campus in Potchefstroom. Interpreting is used for all undergraduate modules (and some postgraduate modules) not taught in English or Afrikaans but where access in English or Afrikaans is required. Some modules are also interpreted into Setswana.

Educational interpreting facilitates access in both English and Afrikaans for students in all fields of study. It also enables lecturers to teach in either English or Afrikaans.

Parallel-medium classes have been offered for some time in certain modules. This was expanded to large first-year modules on the campus in Potchefstroom from the beginning of 2016 and will be rolled out to further study years where practicable.

Interpreting from English to Setswana is available on request in certain modules on the campus in Mahikeng. On the campus in Vanderbijlpark, first-year classes are offered in parallel medium, and in English only from the second year of study. Interpreting from English to Afrikaans is available on request from the second year onwards.

Promoting academic success

The NWU offers several programmes to assist students academically:

- **Academic literacy modules:** All first-year students do academic literacy and skills tests to determine whether they would benefit from the **additional academic literacy modules** offered.
- **Other academic support** includes peer mentoring, tutorials, reading laboratories and writing centres.
- **Supplemental Instruction (SI)** is an internationally recognised student academic support system.
- The **University Preparatory programme** (UnivPrep) is a bridging programme for students who would otherwise not qualify for admission to university.
- **Refresher programmes in mathematics** are offered to first-year students registered for programmes that include modules in mathematics.
- Various **extended programmes** enable students to complete their studies over an extended period of time.



Critical skills for the country

Using multimodal education, the NWU offers a range of qualifications and programmes that focus on developing scarce and strategic skills in its graduates:

Teachers

In 2016 the NWU delivered 1 562 teachers – 1 126 of them BEd graduates and 436 Postgraduate Certificate in Education graduates. These graduates were either contact or distance students.

We also educate technical teachers who are in high demand due to the technical curriculum implemented in secondary and technical schools. Furthermore, we strive to deliver a sustainable number of graduates in the critical fields of Mathematics and Natural Sciences Education. The Diploma in Grade R Teaching (contact and distance delivery) is offered to fill the national teaching gap in this important phase of schooling.

Accountants

To address the shortage of accountants in South Africa, we offer four professional accountancy degrees at honours level: BCom in Forensic Accountancy, in Chartered Accountancy, in Management Accountancy and in Financial Accountancy. The NWU is the only university in South Africa offering all four specialisations at the undergraduate and honours levels.

We offer master's degrees in much-needed specialisations such as Taxation, Human Resource Management, Tourism Management, Statistics, Informatics, Risk Management and International Trade.

We also offer a PhD in Economic and Management Sciences with programmes in critical research areas such as Forensic Accountancy, International Trade, Risk Management, Accountancy, Tax and Labour Relations Management, among others.

Mathematicians and natural scientists

We offer a number of undergraduate and postgraduate qualifications with various programme specialisations in the critical fields of mathematics and natural sciences.

Among these are Business Mathematics and Informatics programmes in Business Analytics, Quantitative Risk Management and Financial Mathematics.

The part-time MCom in Applied Risk Management, endorsed by the Institute of Risk Management South Africa, allows full-time employees to build their risk management skills.

Engineers

To help address the shortage of engineers in South Africa, we offer qualifications in the following specialisations: Chemical Engineering, Chemical Engineering with a programme in Minerals Processing, Computer and Electronic Engineering, Electrical and Electronic Engineering, Electro-Mechanical Engineering, Mechanical Engineering and Industrial Engineering (all programmes are accredited with the Engineering Council of South Africa).

Nurses

To address the shortage of nursing staff in South Africa, we offer various undergraduate and postgraduate nursing qualifications.

Animal Health technicians

We train animal health technicians who play a very important role considering the critical shortage of professionally qualified veterinarians in South Africa.

Transport economics and logistics management skills

We also train graduates in these sought-after skills.



Our centres

- The Centre for Pharmaceutical and Biomedical Services manages all commercial pharmaceutical and biomedical services.
- The DST HySA Infrastructure Centre of Competence focuses on hydrogen production, storage, reticulation and safety codes and standards.
- The Centre for Text Technology (CTeX^T®) does research in human language technology and develops language technology products, such as spelling checkers and machine translations, for South African languages.
- The Centre of Excellence in Advanced Manufacturing (CFAM) is a trailblazer in extrusion, which is used to manufacture products in the food, feed, plastic, powder paint and compounding industries.
- The DST/NWU Preclinical Drug Development Platform and the Centre of Excellence for Pharmaceutical Sciences have developed a unique drug delivery technology, known as Pheroid®, for more effective treatment of diseases such as malaria.
- The World Health Organisation Collaborating Centre for the Quality Assurance of Medicines (CENQAM®) is involved in quality assurance and control of medicines for regulatory and non-regulatory organisations in South Africa and abroad.
- Offering honours and master's degrees, the Centre for Applied Radiation Science and Technology (CARST) builds capacity for the nuclear industry in South Africa.
- The Community Law Centre, Animal Health Centre and the Ipelegeng Family Centre render free services to people who cannot afford these services.
- The Centre for Water Sciences and Management assists industry and government in addressing water-related problems facing South Africa.
- The Centre for Business Mathematics and Informatics focuses on industry-directed research in quantitative risk management, business analytics and data science with application in the financial sector.
- The Serious Games Institute South Africa (SGI-SA) uses special simulation games to train people in subject fields such as socio-economics, regional planning and risk assurance. They also focus on mobile technology and the development of apps for smart devices (App Factory).
- The Centre for Continuing Professional Development (CCPD) offers short courses and workshops in fields such as project management, labour relations and management and computer skills.
- The bHive Enterprise Development Centre empowers students and community members to become entrepreneurs and to tap into opportunities in the marketplace. It also hosts entrepreneurial student groups such as Coachlab at Vaal, the Young Entrepreneur Business Organisation (YEBO) and Enactus.
- The Centre for Applied Risk Management (UARM) addresses the need for postgraduate risk management education and applied risk research.
- The Centre for Translation and Professional Language Services (CTrans) provides services to local and international clients in all 11 South African languages, as well as some European languages.

Our contribution towards combating HIV/Aids

The HIV/Aids pandemic has a huge impact on South Africa and combating HIV/Aids is a priority for the university.

HIV/Aids services are available on all campuses, with the Campus Student Counselling and Development services and health clinics providing voluntary counselling and testing to staff and students.

Students can become involved by volunteering as activists on their respective campuses. The NWU's HIV office focuses on creating awareness about:

- stigmatisation and discrimination
- gender-based violence
- prevention of HIV
- TB awareness
- human rights
- forming healthy relationships
- communication in a relationship
- HIV counselling and testing



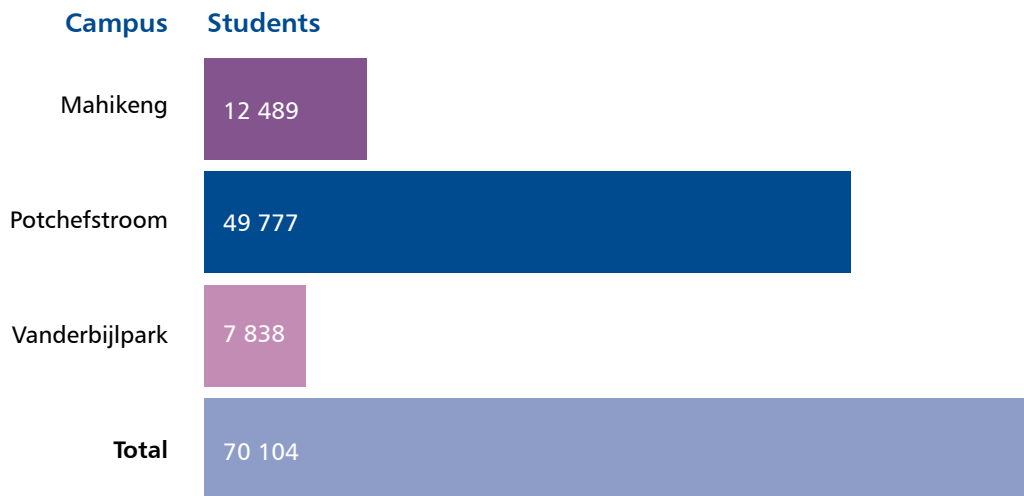
OUR STUDENTS

The NWU is a place where students can achieve academic excellence and at the same time give their imagination wings, visualise their aspirations and incubate future success. Campus life is geared to holistic growth and development, and students are encouraged to participate in a wide range of cultural, sports, counselling and wellbeing activities.

Student profile

Diversity is the defining characteristic of the NWU's student profile. This gives our students a competitive advantage as they develop strength from their diversity and grow in their ability to communicate and interact.

In 2017, the NWU student profile looked like this:

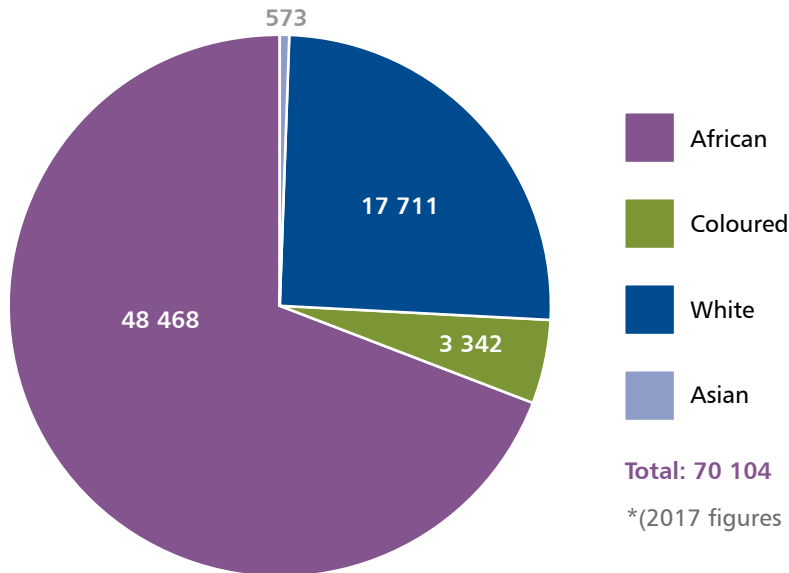


(2017 figures are not final)

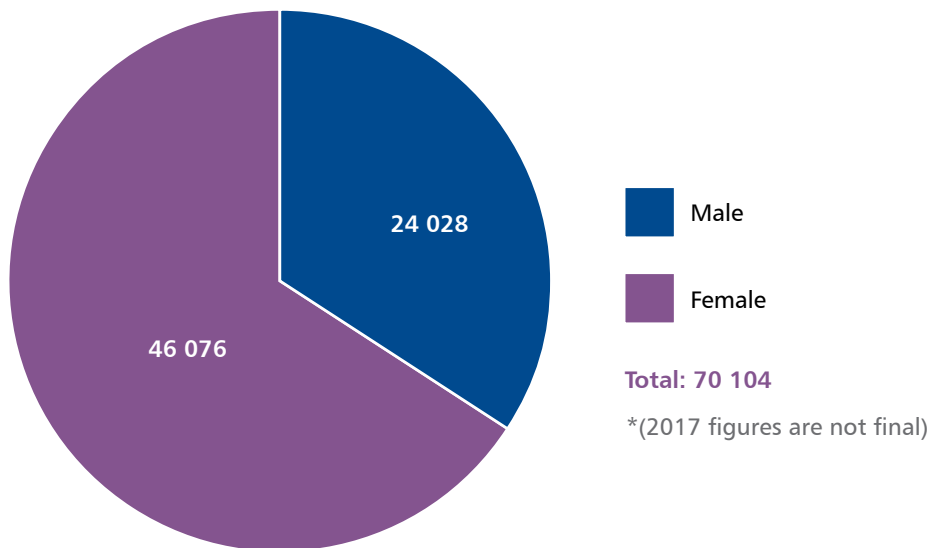
	2012	2013	2014	2015	2016	2017*
Total student enrolment	58 752	60 975	63 135	64 070	63 395	70 104
• Contact	34 389	36 195	37 193	37 943	39 552	41 128
• Distance	24 363	24 780	25 942	26 127	23 842	28 976

* (2017 figures are not final)

Racial composition of students (contact and distance) in 2017*



Gender composition of students (contact and distance) in 2017*



Undergraduate vs postgraduate

Although the majority of students are undergraduate students, the NWU also had significant numbers of postgraduate students in 2017*:

Master's students

2 859

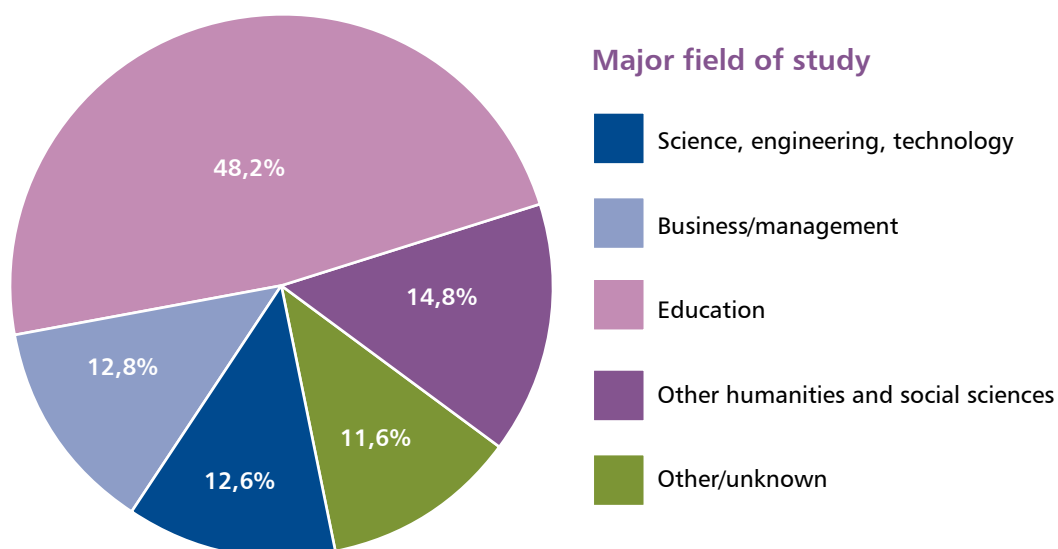
Doctoral students

1 360

*(2017 figures are not final)

Study options

Here are some of the study choices of students in 2017:



Student support

We offer the following to support and develop our students:

- financial support (bursaries)
- counselling, psychological and developmental services
- peer helpers and mentors
- healthcare centres
- disability units
- social workers
- projects providing needy students with regular, balanced meals
- a Career Centre, enabling students to network with potential employers and improve their CV writing and interviewing skills, among others

Student facilities and infrastructure

The following student facilities and infrastructure offer the best possible learning and extracurricular development opportunities:



Modern lecture halls, libraries with research commons, computer laboratories and research laboratories fitted with top-of-the-range equipment, student centres with cafeterias and offices for student leaders, student residences and sports facilities, including sports fields and well-equipped gymnasiums.

Our ongoing building, maintenance and upgrading programme ensures that current and future infrastructure needs are met. We spent R84,59 million on infrastructure and facilities across the NWU in 2016 with the highlight being the completion of the new building for Pharmacy and Biological Sciences on the campus in Potchefstroom.

Extracurricular development

Students have many opportunities to develop their talents by participating in sport, arts, cultural and other extramural activities.

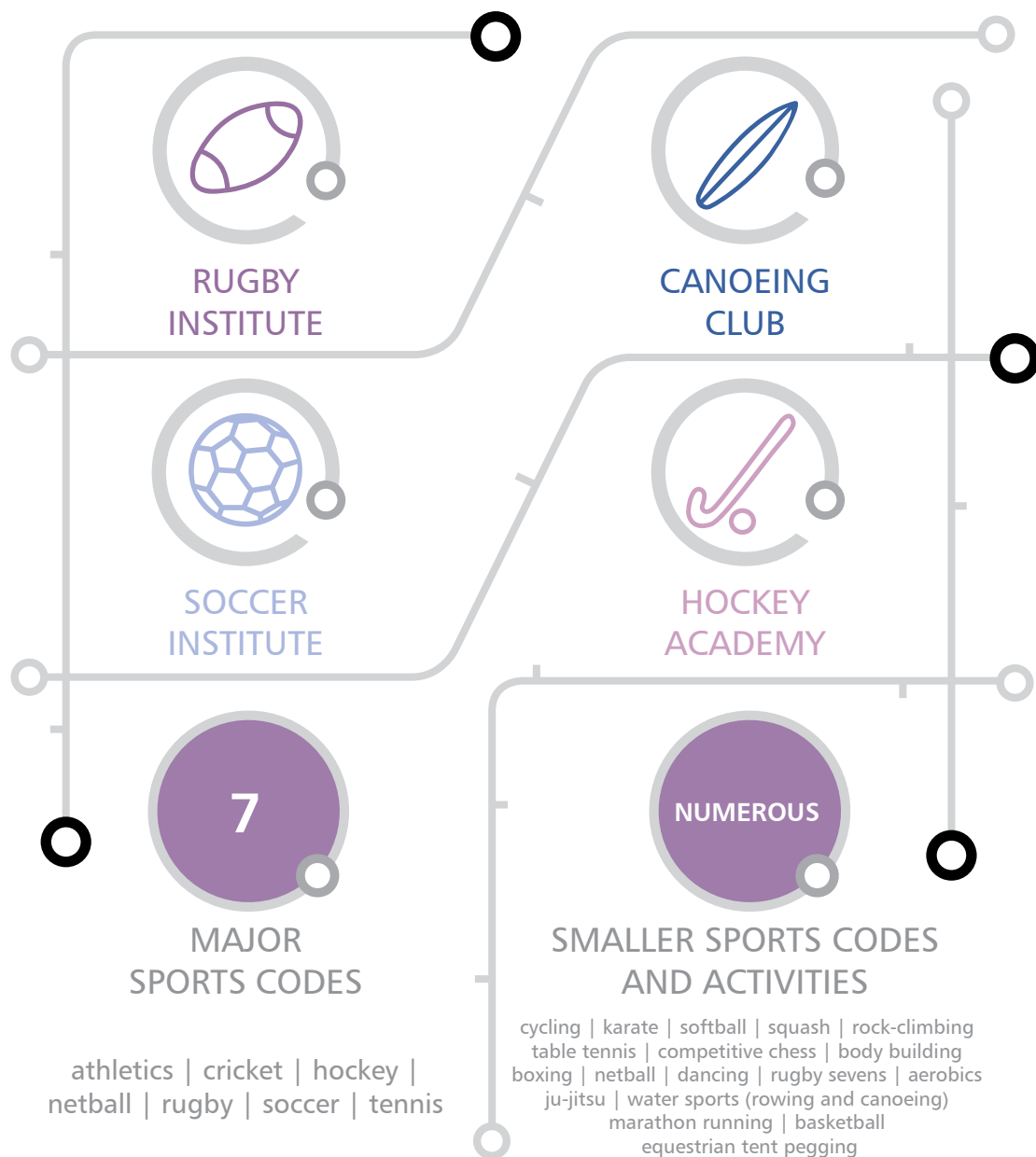
- Cultural activities include debate, drama, dance and cultural societies, orchestras, first-year concerts, musicals, talent competitions, choirs, vocal groups, art festivals, exhibitions and competitions, campus radio stations and student newspapers.



Sporting excellence

Based on achievements on the sports field, the university is one of the top sports universities in South Africa.

The NWU boasts the following:



Our champions

NWU sports teams and individuals have produced outstanding performances in the University Sport South Africa (USSA) championships and the Varsity Cup.

USSA Games 2016

Sports code	First, second or third place
Gymnastics	First
Karate	First
Athletics	Second
Badminton (Two teams)	Second Third (B and C sections)
Cycling	Second
Women's hockey	Third
Golf	Third
Netball	Third
Rugby	Third
Rugby sevens	Third

Varsity Cup 2016

Sports code	First, second or third place
Athletics	First
Netball	First
Rugby	Second

USSA Games 2017

Sports code	First, second or third place
A Section	
Aerobics (hip-hop team)	First
Athletics	First

Sports code	First, second or third place
Gymnastics	First
Karate	First* and second
Netball	First
Badminton	Second
Body building	Second
Women's chess	Second
Women's table tennis	Second
Boxing	Third
Women's basket ball	Third
Women's hockey	Third
Squash	Third
B Section	
Men's and women's football	First
Tennis	First
Badminton	Second
Rugby	Third

*(18th consecutive year)

Varsity Cup 2017

Sports code	First, second or third place
Men's cricket	First
Netball	First
Athletics	Second
Women's hockey	Third

International sports achievements

Four athletes from the NWU competed at the 2016 Olympic Games in Rio de Janeiro, Brazil, and one NWU coach was also part of the South African team. Our athletes brought home a gold and a silver medal. Many athletes from the NWU also competed at the various International Association of Athletics Federation's Diamond League competitions during 2016, bagging seven gold medals.

The NWU's Olympic Games gold medallists, an 800m runner, represented SA at the IAAF World Championships in London in August 2017 where she won gold in the 800m and bronze in the 1 500m.

Two basketball players played for the USSA national team which represented South Africa at the Confederation of University and Colleges Sports Association games in 2016. Two others played for the Zimbabwe National under-20 team, while an NWU coach trained USSA's national team.

Two football players, one being a woman, were selected for the USSA national football teams representing South Africa during the World Student Games in Taipei in August 2017.

Top training venue

A modern **Sports Village** on the NWU's campus in Potchefstroom accommodates national and international sports teams that train at the university.

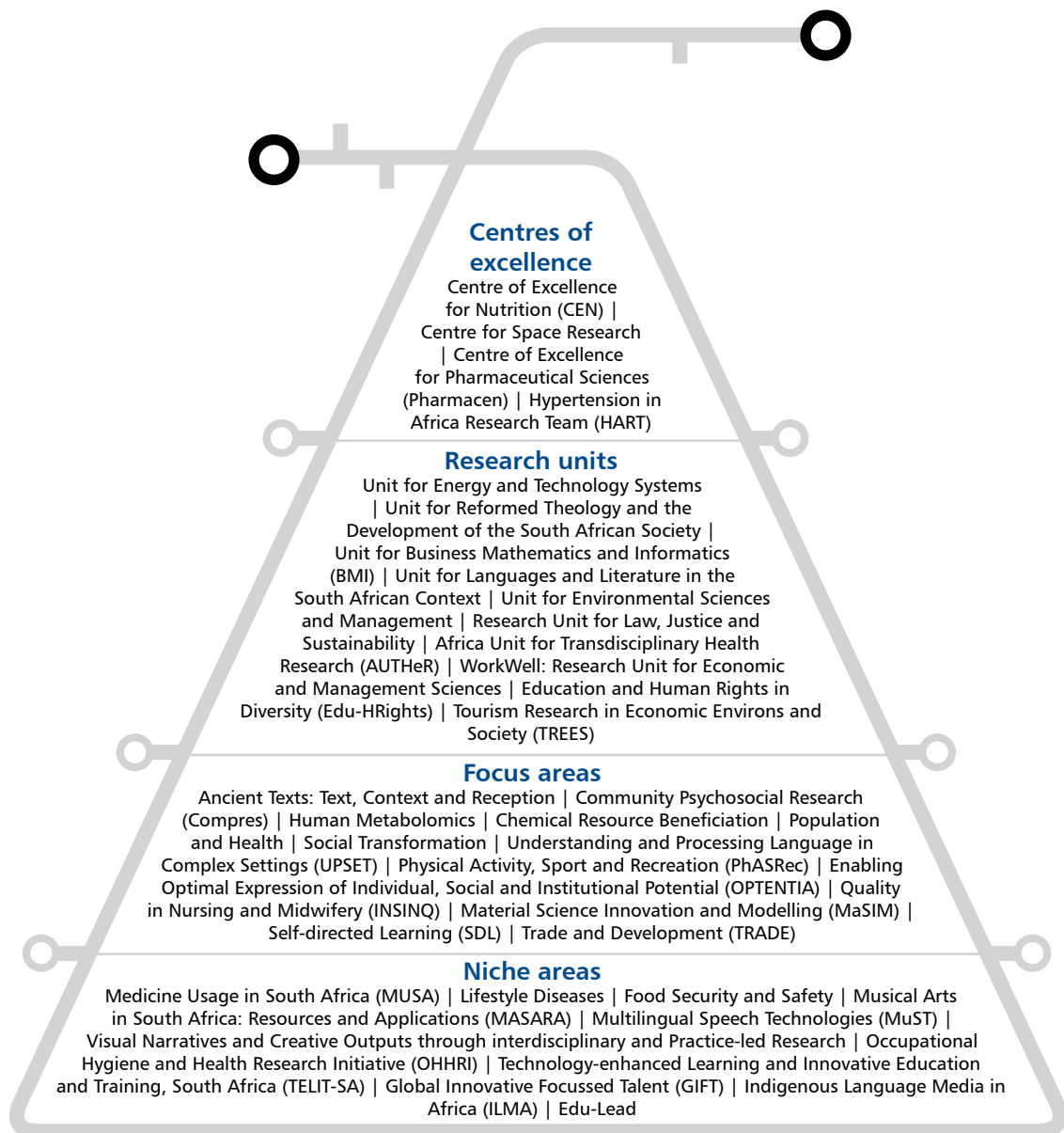
Elite sportspeople from various levels of participation use the top-of-the-range facilities at the **NWU High Performance Institute (HPI)**. It has one of the best-equipped sports gymnasiums in Africa and offers a complete range of sports training, medicine, research, nutritional and sport psychology services.

The **Institute for Sport Science and Development** provides scientific support services to national and provincial sports federations, the North-West Academy of Sport and various sporting codes on our campuses.



OUR RESEARCH

Research at the NWU is organised according to a research entities model with four levels. These are niche areas (the entry-level entity), focus areas, units and, ultimately, centres of excellence.



Several centres, platforms and institutes are hosted at the NWU, mainly on the campus in Potchefstroom.

They are the following:

- DST/NWU Preclinical Drug Development Platform (PCDDP)
- DST HySA Infrastructure Centre of Competence in hydrogen production, storage, reticulation and safety codes and standards
- dti Centre for Advanced Manufacturing

- DST Centre of Excellence in Indigenous Knowledge Systems (IKS)
- Centre for Human Metabolomics
- South African Centre for Digital Language Resources (SADiLaR)

The NWU also has a commercial research entity:

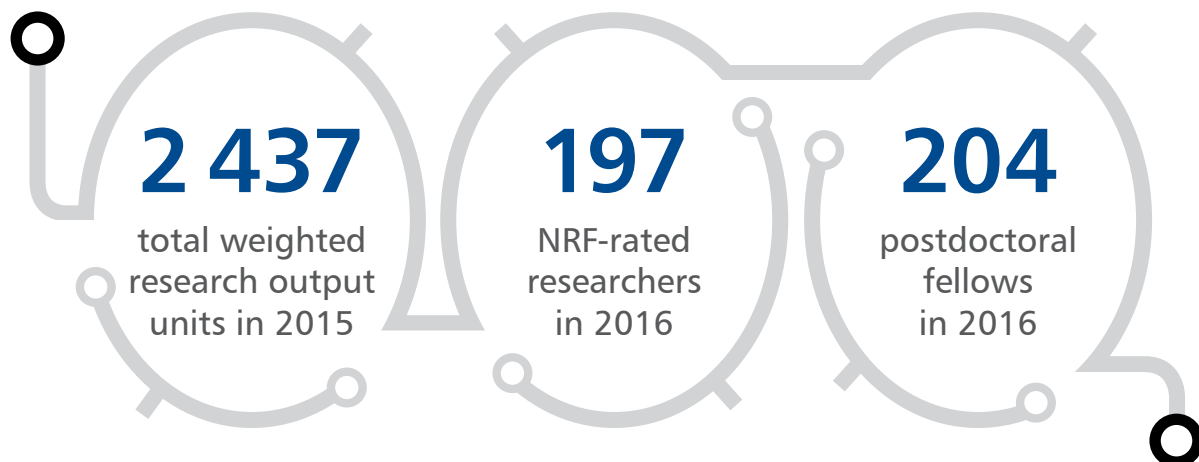
- Centre for Pharmaceutical and Biomedical Services

Research chairs

The Department of Science and Technology (DST) has awarded five research chairs to the campus in Potchefstroom. These chairs are in Coal Research, Early Detection and Prevention of Cardiovascular Disease in Africa, Nuclear Engineering, Astrophysics and Space Research, and Biofuels and other clean alternative fuels.

The campus also has four externally funded research chairs: ETD/SETA Chair in Early Childhood Education, the Nutricia Research Foundation Chair in Clinical Nutrition, the Eskom Chair in Emission Control and the World Trade Organization Chair.

Research scoreboard



	2012	2013	2014	2015
PhDs awarded	154	168	171	222
Article equivalents published (total)	869	1 170	1 127	1 250
Total weighted research output	1 793	2 180	2 146	2 437

Our researchers

On average, our academics spend 40% of their time conducting research, which is in line with our Annual Performance Plan.

The number of our NRF-rated researchers increased from 140 in 2012 to 197 in 2016:

	2012	2013	2014	2015	2016
NRF-rated researchers	140	169	182	189	197

Building research capacity

To encourage more academic staff to apply for ratings and raise their research output, the NWU provides training on preparing abstracts and conference papers, article writing and best practices in preparing research questionnaires.

Postgraduate recruitment

We are also broadening our pool of research skills by actively recruiting more master's and doctoral students. The number of international postgraduate students increased from 1 844 in 2015 to 2 029 in 2016.

Our focus on internationalisation

Through collaboration with other universities and institutions internationally, we are actively positioning the NWU in the global arena. Our internationalisation activities include student and staff exchange and cooperation in academic, research, cultural and sports matters.

In 2016 we had 3 558 students from over 84 countries, including 2 029 postgraduates of whom 482 were doctoral candidates.

National and international cooperation

The NWU has relationships with many universities and other entities abroad and in South Africa. Here are a few examples:

Universities abroad

- Universities in Belgium: Leuven, Antwerp, Thomas More, Limburg-Leuven, Hasselt Evangelische Theologische Faculteit.
- Universities in the Netherlands: Tilburg, Leiden, Apeldoorn, Driestar College, Twente, Vrije Universiteit, Nyenrode Business University.
- Universities in Germany: Humbolt, Hochschule Zittau/ Görlitz, Justus Liebig, Potsdam, Katholische Hochschule Freiburg.
- Universities in the USA: Florida Atlantic, Virginia Tech, San Houston State University.
- Universities in England: Warwick, Coventry.
- Furthermore the NWU has relationships with universities in Malawi, Namibia, South Korea, Finland, Switzerland, Romania, Sweden, Australia, Chile and Austria.

International bodies

- United Nations Environment Programme / Education, Scientific and Cultural Organization (UNESCO) / Population Fund
- World Bank
- Association of Energy Engineers (international body)
- India Tea Research Association
- BRICS: Academic Forum, University Network and Council of Exercise and Sport Science
- European Union
- G20 Youth Forum
- European Scientific Institute
- The World Academy of Science (TWAS)
- World Association of Young Scientists
- International Centre for Trade and Sustainable Development (ICTSD)
- World Trade Organization
- World Health Organization
- The Institute National Polytechnique Toulouse (INPT), France
- International Association for Cognitive Education and Psychology (IACEP)
- Electricity regulators of the SADC countries
- World Cycling Centre Satellite Africa
- Intra Africa Academic Mobility Scheme EACEA-07-2016
- PAN-AFRICAN programme
- SAS Analytics, Business Intelligence and Data Management
- International Speech Communication Association (ISCA)
- Google (2016), BBN (2011-2016)
- International Project Management Association (IPMA)
- American Podiatric Medical Student Association (APMSA)

South African industry

- Absa Bank
- Big Concerts
- South African Revenue Service
- Sasol-Inzalo
- National Nuclear Regulator (NNR)
- iThemba Laboratories
- Puregas
- ArcelorMittal
- Anglo American
- BHP Billiton
- Pharma24 (Pty) Ltd
- IDEXIS (Pty) Ltd
- Eskom
- Necsa
- Hatch
- Idwala
- Lonmin
- Hydrox
- Johnson-Matthey
- Geotron
- Standard Bank SA
- Armscor

We also have relationships with national professional and governing bodies in the fields of psychology, law, education, health, tourism, agriculture, accountancy, treasury, families and artificial intelligence.

We liaise with several provincial and national departments in the country, and there is close cooperation with local communities, traditional authorities, sports clubs (local/provincial/national), business chambers and local municipalities.

OUR INNOVATION

Income through innovation

Patents and product sales generate around R19,7 million a year. Of the 54 RSA-patented inventions in our intellectual property portfolio, 47 are registered in various other countries, spanning 23 different countries in total.

Spin-off companies

The NWU forms innovative small and medium-sized spin-off companies as part of our commercialisation strategy; we hold equity in some of these. Currently, we have 29 spin-off companies, 21 of which are active.



OUR SUSTAINABILITY AND COMMUNITY IMPACT

Sharing our expertise is intertwined with our core business and includes sustainability and community impact.

Some of these activities generate third-stream income through short courses, consulting or other services and technology transfer.

However, our engagement activities are often not for profit. Rather, they enable staff and students to uplift the community through developmental engagement, community service projects, discipline-based outreach and volunteering.

Our engagement activities often involve research about, with and in communities. These activities are interactive, entail learning from our communities and also provide work-integrated learning or service-learning opportunities for students.

In 2016, the NWU was involved in nearly 1 000 community-related activities. We were solely responsible for some of the projects and participated in others through projects driven by other groupings.

The Legal Clinic handled hundreds of cases. These include 594 cases opened in 2016, 2 064 people receiving advice and 609 files closed.

More than 80 student-driven community outreach activities were recorded, but in addition to these, there were also many ad hoc activities such as water collection drives and Cancer Association of South Africa (Cansa) support walks which are not recorded as formal activities.

Community engagement projects

To enable, develop and engage communities, we initiate or participate in a variety of projects that:

- build houses and create jobs for the foster parents caring for orphans affected by HIV/Aids
- provide pre-school and after-school recreation facilities for orphans
- train pre-school caretakers in educational techniques and assist in formalising and developing informal day care centres
- share our expertise on community radio programmes, for instance about legal matters
- improve rural health and wellbeing by for instance teaching farm women about healthy nutrition and assisting them to generate income from sewing and glass-making
- provide free legal services to people who cannot afford legal counsel
- provide primary animal health services to people who cannot afford veterinary services
- coach and equip men to fulfil their role in local communities
- support international initiatives such as the campaign against women and child abuse, and national campaigns, for example those organised by Cansa
- train members of NGOs to manage their projects sustainably and profitably
- cooperate with groups such as NGOs, business chambers and government departments to reinvigorate the economies of the Vaal Triangle, Tlokwe and Matlosana
- do multidisciplinary research, for instance in Bekkersdal, focusing on the eco-wellbeing of this mining area
- empower emerging farmers to become commercial Nguni farmers
- train government officials in financial management
- train business start-ups, with specific focus on female entrepreneurs
- offer swimming lessons and circuit training to members of the community and present sport clinics in and around Mahikeng.

Partnering with schools

- We prepare promising grade 12 learners for their matriculation examinations and the challenges of university life.
- We present a Winter School where university staff and students offer supplementary teaching.
- We assist grade 12 learners to improve their maths performance.
- We help increase the number and readiness of students enrolled for science, engineering and technology studies at universities.
- We offer training for teachers, office-based staff and education leaders.
- We empower accounting educators to better understand the curriculum and improve their learners' grade 12 exam results.
- We assist teachers with thinking skills and strategies.
- We assist early childhood education practitioners to run their centres more effectively and provide quality pre-primary education.
- We teach music to talented young musicians.
- We provide interpreting services at two schools, making multilingual learning possible.
- We train teachers to become soccer coaches, referees and managers.
- We adopt sports teams to enhance their performance and make them aware of tertiary education opportunities.
- We organise astronomy quizzes for grade 7 learners to promote interest in science.
- We host a Science Week for grade 4 to 12 learners.
- We visit schools to help them with natural science experiments and donate MyLab sets to demonstrate chemical experiments to learners.
- We organise life skills groups at certain schools (and also in the broader community).
- We visit schools to encourage good citizenship among learners and teach ancient culture and Latin classes at schools in Potchefstroom.
- We help to establish new libraries at schools, or assist existing ones to expand.
- We showcase different career opportunities in mathematics and technology.
- We undertake projects to improve local communities' quality of life, for instance by designing insulation panels for informal housing.
- We supplied the technology to ensure purified water for a village and school.

Involving students

We encourage our students to contribute to society through volunteerism.

Since 2001, the NWU's campus in Potchefstroom has had the biggest registered student welfare organisation in the world. They received second place in the international 2012 MacJannet prize from the Talloires Network for their good work and global citizenship. In 2017, the Rag committee donated about R1,6 million to deserving projects and individuals. More than R3,5 million was raised by the Student RAG Community Service and RAG in the 2016 student council term.

In addition, the campuses hold fundraising events such as golf and jazz days and cycling events to ensure that needy students eat two balanced meals every day.

Students do voluntary community service at local children's homes, shelters for the homeless, old age homes and the Society for the Prevention of Cruelty to Animals.

Students also offer extra maths classes in schools to assist teachers.

Going green

As part of our environmental stewardship and awareness campaigns, there are annual competitions between student residences to save energy. During the past four years the students' efforts to minimise their electricity consumption resulted in an average saving of nearly R370 000. A focused approach is currently being followed to determine baseline consumption of all essential resources. Working groups with a dedicated focus on managing and reducing consumption of water and energy have been established.

The awareness campaign for Global Climate Change Week included activities such as the exhibition of books on climate change, art exhibitions with recycled materials and panel discussions on the topic. This campaign was also acknowledged when two students received recognition for a paper delivered at an international conference in Manchester early in 2017.

OUR FINANCES

The NWU is a financially stable institution that runs at a profit and has a growing income.

Total income in 2016:
R3 838 million

	2011	2012	2013	2014	2015	2016
Total income	R2 318m	R2 702m	R2 973m	R3 206m	R3 527m	R3 838m
Surplus (recurrent items)	R63m	R103m	R17m	R104m	R136m	R229m
Staff cost/total cost	52,4%	52,2%	51,5%	52,6%	54,7%	*54,8%
Self-generated income	R751m	R864m	R944m	R933m	R946m	R990m
% of income from government	43,1%	40,8%	39,1%	39,5%	38,8%	40,1%
% of income from tuition fees	24,7%	26,5%	28,4%	31,2%	33,2%	32,4%
Capital expenditure on upgrading projects	R53,2m	R82,5m	R69,9m	R76,2m	R63,1m	R52,9m

* Before benefit enhancement - IAS19



YUNIBESITI YA RONA

Ka dikhamphase kwa Mahikeng, Potchefstroom le kwa Vanderbijlpark, YBB e ikemiseditse go dira e le yunibesiti e e ikemetseng ka nosi e e kopaneng e e diragatsang thuto le patlisiso e e gaisanang le lefatshe ka bophara mo dikhamphaseng tse tharo tsothle.

Ka 2017 re ne re na le badiramongo ba le 6 214 ba ba itlhaolang mo ditirong tsa bone mme ba dirisana boitseanape jwa bone mo Aforikaborwa le kwa moseja mme ba ruta mme ba ema nokeng baithuti ba le 70 104.

Mo baithuting ba le 12 489 ba, ba ne ba le mo Khamphaseng ya rona ya Mahikeng, 49 777 ba le mo Khamphaseng ya rona ya Potchefstroom mme ba le 7 838 ba le mo Vanderbijlpark. Baithuti botlhe ba rona ba bona mosola mo palong e kgolo ya mananeothuto a akatemi a mefutafuta e re e rutang go fitlhelela bokgoni jwa bone gore ba tlhabolose maiphediso a bone.

Go tthomamisa gore ba bona katlego mo akateming re ba thusa ka mekgwa e e farologaneng. Thuso e akaretsa dimmojulu tsa puisokwalo, kaelotsela ya balekane, difatlhosi, dilaboratori tsa go buisa le disenthara tsa go kwala. Porokeramo ya rona ya Go Ipaakanyetsa Yunibesiti (UnivPrep) le Porokeramo ya Thuto ya Tlaleletso le Porokeramo ya go Boeletsa Dipalo le diporokeramo tse dingwe tsa mefutafuta tse di farologaneng le tsone ke karolo ya kemonokeng ya akatemi.

Pholisi ya rona ya dipuo e e mofuta ka nosi ya bopuonsi le yone e thusa go oketsa go tsena ga baithuti le go ba bulela katlego le go fana ka ditirelo tsa go tolokela dithuto.

Ka 2016 re abetse palogotlhe ya didikerii le didipoloma di le 17 510, didikerii di le 744 tsa MA, le didikerii tsa PhD di le 238.

Go kopana le dikatlego tsa rona tsa go ruta le go ithuta le babatlisisi ba rona ba a itlhaola. Mo go ba ba abetseng mo palogotlheng ya ntshetsontle ya patlisiso e e lekanyeditsweng ya 2 437 ya 2015 go ne go na le ba morago ga di-PhD ba le 171 le babatlisisi ba NRF e ba neilweng maduo ba le 189.

Sengwe le sengwe se re se dirang se tsepame go ka netefatsa mosolatogamaano wa rona wa go fetola le go emisa YBB go nna setheo se le nosi sa akatemi ya boitseanape se se gaisang se se nnang le tlamego ya go tliša tshiamo ya boago. Mosola wa rona mo bokhutlong ke go gaisa mo thutong le mo go ruteng ka poposešwa le ka patlisiso e e bogale mme re tswele mosola morafe ka kitso.

(Dipalopalo tsa 2017 ga di ise di nne tsa bofelo)





Enquiries and contact details

Theo Cloete

Director: Marketing and Student Recruitment

Tel: +27 18 299 2769

Email: theo.cloete@nwu.ac.za

Louis Jacobs

Director: Corporate Communication

Tel: +27 18 299 4918

Email: louis.jacobs@nwu.ac.za

Warren Makgowe

Director: Stakeholder Relations

Tel: +27 16 910 3185

Email: warren.makgowe@nwu.ac.za

Acknowledgements

Compilation

Corporate Communication, NWU

Design, layout and printing

AFRICAN SUN MeDIA

Photography

NWU service providers and colleagues