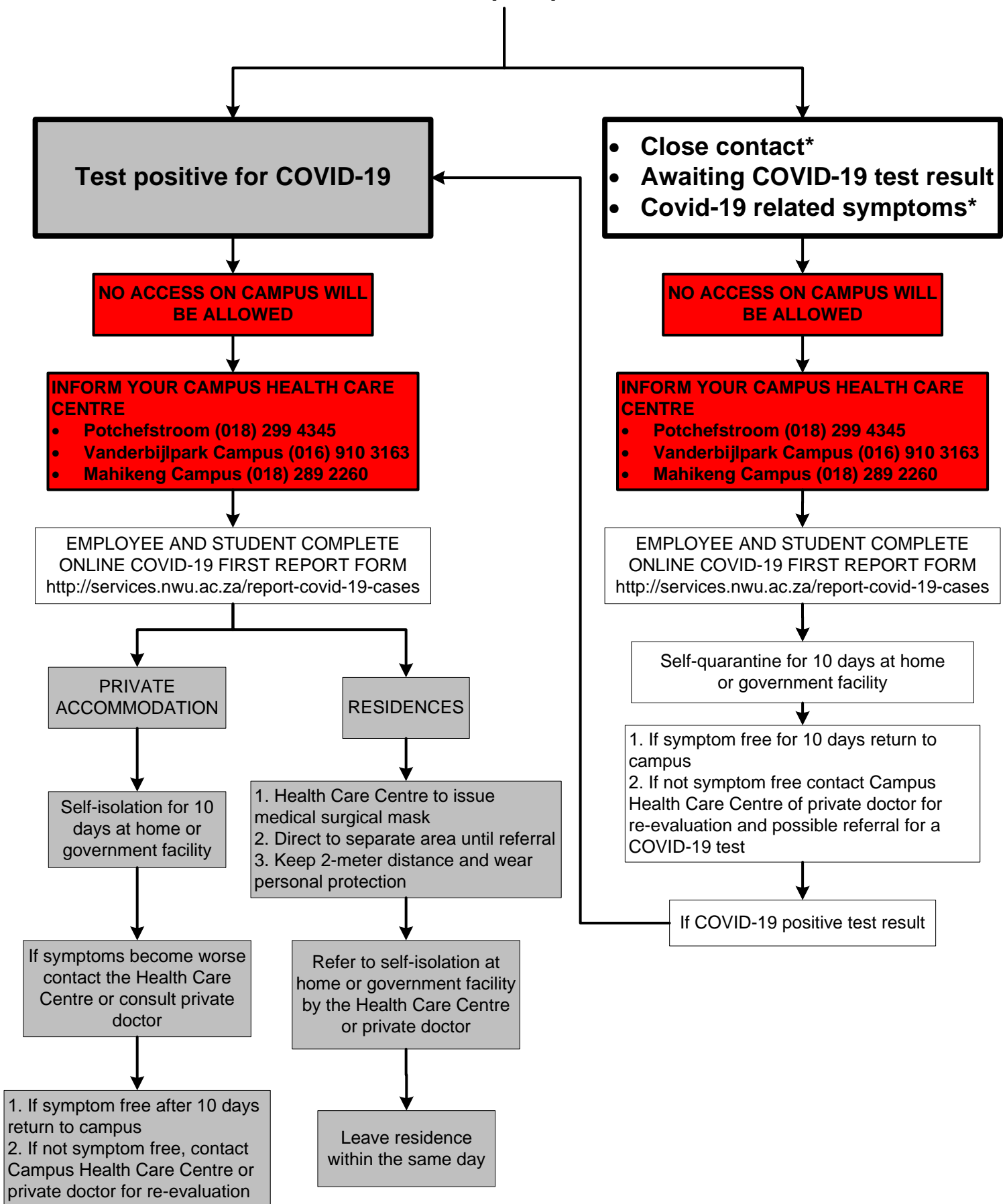


# PROTOCOL FOR A POSITIVE COVID-19 PERSON, PERSON UNDER INVESTIGATION (PUI) OR CLOSE CONTACT



\* **Close contact:** Face to face contact <1m, duration of contact > 15m, not wearing appropriate personal protection (e.g. face mask); living in the same household

\***COVID-19 related symptoms:** Dry cough, fever, sore throat, shortness of breath, loss of taste and smell, redness of eyes, tiredness, body aches, headaches, skin rash, nasal congestion, diarrhoea