

BASELINE RISK ASSESSMENT: STUDENT ACTIVITIES AT THE NWU

Ref nr: NWU/OHS/SA/RA/001

Date of assessment: 03 July 2022 (Revision 05) [10 December 2021 (Original)].

Type of assessment: Baseline risk assessment

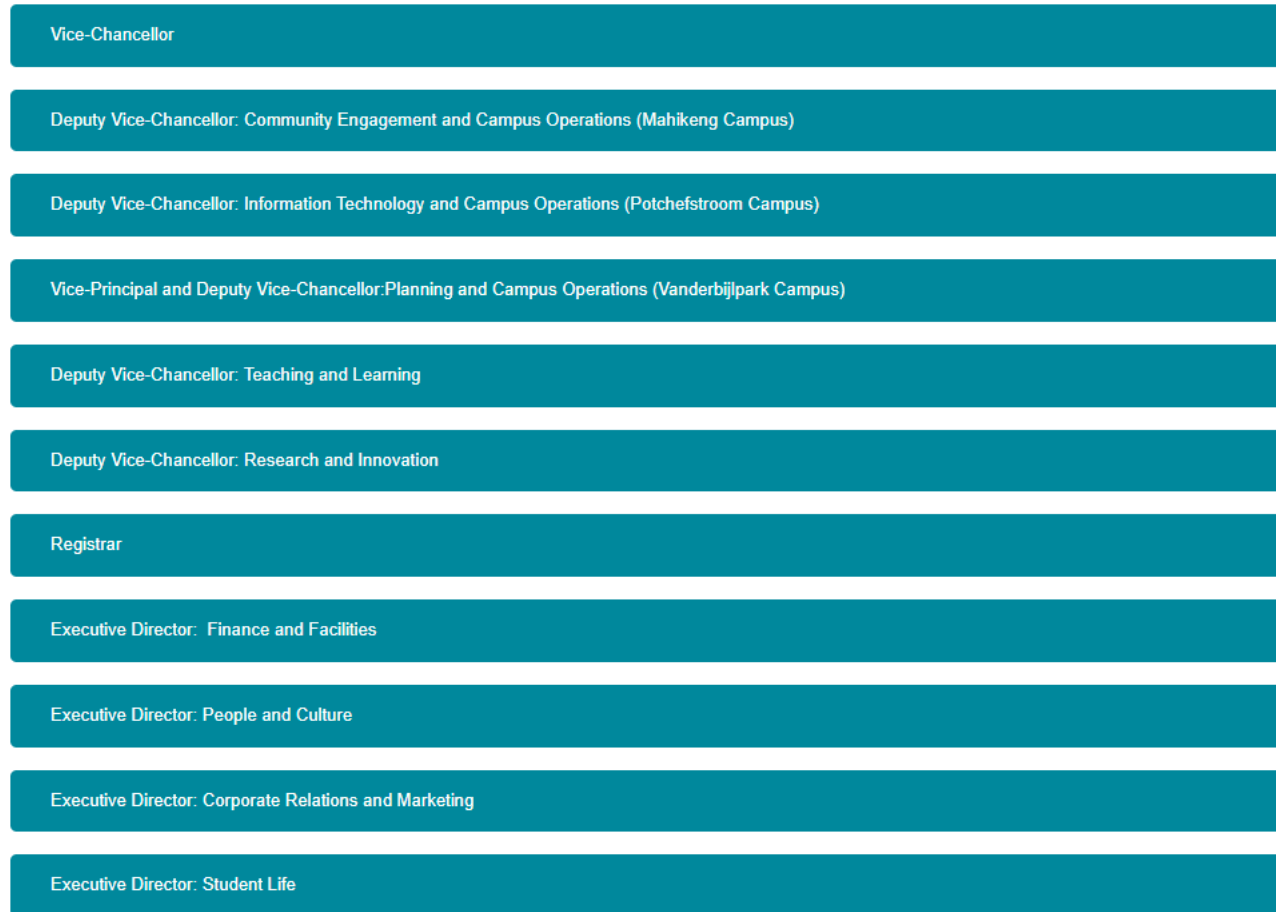
PURPOSE OF NWU BASELINE RISK ASSESSMENT ON STUDENT ACTIVITIES:

- The purpose of this baseline HIRA is to establish an NWU student activities risk profile on SARS-CoV-2 (coronavirus), causing COVID-19.
- To arrive at a clear understanding of the risk that COVID-19 poses for NWU students and to assign controls to, as far as reasonably practicable, manage the risk of contracting or transmitting the coronavirus (COVID-19).
- The risk assessment was performed to obtain a benchmark that distinctly and clearly delineates and quantifies risks associated with a specific hazard, in this case a **biological hazard**, the SARS-CoV-2 (coronavirus), causing COVID-19.

This baseline risk assessment focuses on a **broad overview of student activities** at the NWU in order to determine the risk profile and controls to be used in subsequent issue-based risk assessments.

MANAGEMENT STRUCTURE

Figure 1: NWU Management Structure – Organisational Structure



RISK CONTROLS

Table 1 provides examples of COVID-19 control measures that should be used to reduce the risk of COVID-19.

***Note that not all of the listed control measures may be applicable to every entity, task and/or activity that students engage and/or participate in.*

Table 1: COVID-19 Control Measures

Eliminate	<ul style="list-style-type: none"> • Daily self-screening for signs and symptoms before leaving home or university residence, if ill/sick stay at home. • Self-isolate when experiencing COVID-19 signs/symptoms, inform your university residence House Parent (where relevant) and NWU Campus Health Care Centre (CHCC). • Testing of students with signs/symptoms of COVID-19 at CHCC or external medical practitioner. • Where possible, arrange facilities to maintain and promote increased ventilation and/or airflow. • Where possible, make use of online or hybrid platforms to conduct student activities.
Reduce	<ul style="list-style-type: none"> • Minimise the time students are in close proximity to others in indoor settings, with consideration of the reconfiguration of activities, physical barriers, environmental cleaning procedures and frequent hand washing. • Apply sanitation and ventilation protocols • Reduce number of “high touch” contact points. • Regularly clean common contact points such as doors, door handles, buttons, equipment, tools, countertops, etc. • Install pop-up and mounted hand sanitations stations that are easily accessible. • Make cleaning materials available and implement regular cleaning procedures (at least once a day). • Review the performance and servicing of ventilation and air conditioning systems and use fresh air in preference of recirculated air. • Increase ventilation in indoor spaces. • Rooms should be well ventilated with windows and doors opened to allow fresh air circulation. • Students should wash and/or sanitize their hands before and after using shared equipment. • Encourage voluntary vaccination of students against Coronavirus (COVID-19).

NWU Risk Assessment: Coronavirus (COVID-19)

Administrative	<ul style="list-style-type: none"> • Making available and completing testing: PCR Coronavirus (COVID-19) test and rapid antigen test (COVID-19)
Personal protective equipment (PPE)	<ul style="list-style-type: none"> • Re-usable PPE should be thoroughly cleaned after use. • PPE should not be shared between students. • Re-use (extending the life) of single use PPE should only be done in exceptional circumstances (PPE shortage of supply) and according to NDoH¹ guidance. • Cloth face masks are not considered as PPE.
Behaviour	<ul style="list-style-type: none"> • Student behaviour and cooperation will be the key to implementing all of the control measures • Perform training and orientation sessions to inform students of the changes in regulations and protocols. • Make available relevant information and documentation pertaining to the management of COVID-19 and related regulations and protocols. • Encourage an open and collaborative approach between students as it pertains to adherence to COVID-19 regulations and protocols. • Seek feedback and be prepared to change interventions based on the feedback and regular reviews of the risk assessment and professional health care advice. • Make changes that are sustainable in the medium term. • Instate disciplinary action for misconduct and failure to comply with NWU risk assessment, SOP's, directives and protocols.

¹ National Department of Health.

RISK MATRIX

Table 2: Risk matrix to be used during the assessment

Consequence – C	Value	Probability – P	Value	Exposure – E	Value
None or slight (No effect)	1	Conceivable (as never appended in years of exposure/possible/1 in 1000)	1	None	1
Minimal (Mild symptoms)	2	Remotely possible (less possible coincidence/1 in 100)	2	Low exposure risk: Activities with non-frequent close contact within 1 meters / Minimal contact.	2
Significant (Home isolation+ Recovery)	3	Unusual but possible (more possible occurrence /1 in 10)	3	Medium exposure risk: Activities that require regular (few times a day) and/or close contact (< 1m) (Education / High-population density environments)	3
Major (Hospitalisation)	4	Likely (nor unusual/50/50 chance of occurrence)	4	High Exposure Risk: Activities that require frequent and/or close contact (< 1m) (Education – computer, practical and laboratory activities / Very High-population density environments / Accommodation facilities).	4
Catastrophic (Death)	5	Almost certain (the most likely outcome if the event occurs)	5	Very High Exposure Activities: Health Care students exposed to COVID-19 Specimens or performing aerosol-generating procedures / Practical in hospital or health care facilities.	5

RISK CALCULATION

Risk is calculated in accordance with the following formula:

$$Risk = Consequence \times Probability \times Exposure$$

RISK THRESHOLD

Table 3 below provides the risk threshold indicators used in determining this baseline risk assessment.

Table 3: Risk threshold indicators

Value	Risk level	Action	Colour
1 to 24	Slight	Normal activities / Monitor controls and adherence to NWU COVID-19 OHS SOP and other directives. NWU Physical distancing protocol.	Light Green
25 to 49	Possible	Monitor and case management / Actively manage (Implemented set controls / Management to monitor and enforce / Management inspections / OHS representative inspections to assess compliance / Monitor controls and adherence to NWU COVID-19 OHS SOP and other directives. NWU Physical distancing protocol.	Blue
50 to 74	Substantial	Monitoring plan / Controlled activities / Mitigate risk / Monitor infection rates and re-assess environment and operations.	Yellow
75 to 99	High	Mitigate risk (if not possible do not accept or tolerate risk)	Orange
100 to 125	Very high	Avoid risk (Unacceptable)	Red

OUTCOME OF NWU COVID-19 BASELINE RISK ASSESSMENT: STUDENT ACTIVITIES AT THE NWU

The NWU COVID-19 baseline risk assessment indicates that the pure risk of COVID-19 exposes the NWU and its students to risks that can potentially have a negative impact on the health and safety of students and the University's business continuity. The risks associated with COVID-19 are reduced and mitigated by several pharmaceutical and non-pharmaceutical control measures including vaccination against COVID-19, as informed by the relevant activity's risk factors. The outcome of the NWU COVID-19 baseline risk assessment for students involved in the activities listed in this risk assessment, and requires the following:

- All controls as listed must be adhered to and complied with by all students engaging in such activities.
- Students are **encouraged** to vaccinate to reduce the consequence of severe illness and reducing exposure risk to fellow students, staff and NWU community stakeholders with who students might engage.
- Student activities related to **teaching-learning and research**, such as academic classes, lectures, research and related activities must be hosted in accordance with the relevant national legislation guiding the gathering of persons.
- Where indicated, the University may conduct or request that an activity-based risk assessment be conducted in addition to this baseline risk assessment, identifying additional health and safety risks and assigning effective control measures to reduce possible identified risks.
- Students with comorbidities may voluntarily disclose such to the NWU and submit relevant health assessment documentation from their health care practitioner to the CHCC, with the CHCC identifying possible risks in relation to the activities the student engages with and advises on additional control measures to minimize the risk.

The NWU will closely monitor internal and external COVID-19 trends and changes related to COVID-19 both internal and external to the University, including national and international changes and trends; and where such changes and/or trends can possibly affect the NWU community's health and safety, the University will review the NWU COVID-19 risk assessments.

CONTROL MEASURES:

The following general control measures have been identified for all student activities.

- Students with COVID-19 symptoms are encouraged to stay at home and/or seek medical treatment at a health care facility or medical doctor.
- Implementation of the NWU cleaning and contamination protocols implemented by Facilities Management (daily/once off-cleaning) – specifically at access points and high-contact points).
- All NWU students must complete the compulsory COVID-19 training available on eFundi.
- Venues must be adequately ventilated, as advised by the University's Occupational Health and Safety, Space Management and Engineering Compliance Department and all instructions related to ventilation (including opening doors and windows) must be adhered to.
- The lecturer, tutor, facilitator, house parent, or person conducting or leading the student activity, must ensure adherence to prescribed precautionary health and safety measures that may be relevant in particular circumstances and may prescribe any additional precautionary health and safety measures that may be relevant in particular circumstances.
- All attendees and participants to student activities should be encouraged to frequently sanitise their hands prior to entering the venue, when using shared equipment, and before, after or during student activities as identified below.
- Students are encouraged to observe “sneezing and coughing etiquette”.
- Physical contact such as hugging and/or shaking of hands should be avoided.
- The maximum occupancy of a space may not be exceeded at any time.
- No crowding should occur at venues prior and after any activity, students should leave a venue and building after conclusion of an activity.
- NWU Campus Health Care Centre (CHCC) will continuously monitor internal and external COVID-19 trends, cases and exposure risks, and advise accordingly.
- In the events of changes in COVID-19 trends, report measures such as contact tracing as instructed and required by national legislation and directives and guided by the NWU Campus Health Care Centre.

Where relevant, **SPECIFIC ACTIVITY CONTROL MEASURES** are indicated for a relevant activity in the table below.

NWU Risk Assessment: Coronavirus (COVID-19)

DESCRIPTION (WHO)	ACTIVITY	RISK	INHALATION / CONTACT	Risk Calculation (Pure risk)			RISK	ACTIVITY SPECIFIC CONTROL MEASURES IMPLEMENTED (Applicable and required to all NWU Students – as per activity in each row)	ADDITIONAL MEASURES (Two optional boxes for certain occupations)	Risk Calculation (Residual risk)				
				C	P	E				C	P	E	RISK	
STUDENT ACTIVITY 01														
NWU Students	Attendance and participation in all teaching-learning activities requiring physical presence, including face-to-face contact sessions, tutoring, supplemental instruction, assessments, practical work in lecture venues, laboratories and other teaching-learning spaces	Contact with potentially contaminated surfaces. Contact with possible COVID-19 positive person.	Inhalation / contact	5	5	4	100	General control measures listed	COVID-19 Vaccination (Fully vaccinated student).	3	3	4	36	
									Non-COVID-19 Vaccinated student.	4	3	4	48	
STUDENT ACTIVITY 02														
NWU Student	Meetings, consultation and working groups for TL activities and TL purposes.	Contact with potentially contaminated surfaces. Contact with possible COVID-19 positive person.	Inhalation / contact	5	5	3	75	General control measures listed	COVID-19 Vaccination (Fully vaccinated student).	3	3	3	27	
									Non-COVID-19 Vaccinated student.	4	4	3	48	
STUDENT ACTIVITY 03														
NWU Student	Shared TL spaces, for example offices and study spaces	Contact with potentially contaminated surfaces. Contact with possible COVID-19 positive person.	Inhalation / contact	5	5	3	75	General control measures listed	COVID-19 Vaccination (Fully vaccinated student).	3	3	3	27	
									Non-COVID-19 Vaccinated student.	4	4	3	48	

NWU Risk Assessment: Coronavirus (COVID-19)

STUDENT ACTIVITY 04													
NWU Student	Excursions for TL purposes, required practical work, work-integrated learning, service learning or field trips (Health Sector)	Contact with potentially contaminated surfaces. Contact with possible COVID-19 positive person.	Inhalation / contact	5	5	5	125	<ul style="list-style-type: none"> The activity monitoring officer, in collaboration with the event coordinator(s), may prescribe any additional precautionary health and safety measures that may be relevant in particular circumstances, for example wearing scrubs with disposable PPE as required or using a surgical or NFP95 mask. The host of any activity (including the employer for work-integrated learning) may prescribe any additional precautionary health and safety measures that may be relevant in the particular circumstances, including mandatory vaccination. 	COVID-19 Vaccination (Fully vaccinated student).	3	3	5	45
									<ul style="list-style-type: none"> Non-COVID-19 Vaccinated student. Individual health assessment submitted by students with comorbidities to NWU Health Dept to assess COVID-19 risk posed to student (OHP to recommend additional controls required) after assessment). 	4	3	5	60
STUDENT ACTIVITY 05													
NWU Student	Excursions for TL purposes, required practical work, work-integrated learning, service learning or field trips (Excluding Health Sector)	Contact with potentially contaminated surfaces. Contact with possible COVID-19 positive person.	Inhalation / contact	5	5	3	75	<ul style="list-style-type: none"> The activity monitoring officer, in collaboration with the event coordinator(s), may prescribe any additional precautionary health and safety measures that may be relevant in particular circumstances. The host of any activity (including the employer for work-integrated learning) may prescribe any additional precautionary health and safety measures that may be relevant in the particular circumstances, including mandatory vaccination. 	COVID-19 Vaccination (Fully vaccinated student).	3	3	3	27
									Non-COVID-19 Vaccinated student.	4	4	3	48
STUDENT ACTIVITY 06													
NWU Student	Student consultations, administrative tasks and meetings with NWU staff and other students.	Contact with potentially contaminated surfaces. Contact with possible COVID-19 positive person.	Inhalation / contact	5	5	3	75	<ul style="list-style-type: none"> General control measures listed 	COVID-19 Vaccination (Fully vaccinated student).	3	3	3	27
									Non-COVID-19 Vaccinated student.	4	3	3	45

NWU Risk Assessment: Coronavirus (COVID-19)

STUDENT ACTIVITY 07													
NWU Student	General communication and interaction with staff and students on NWU premises.	Contact with potentially contaminated surfaces. Contact with possible COVID-19 positive person.	Inhalation / contact	5	5	3	75	<ul style="list-style-type: none"> General control measures listed 	COVID-19 Vaccination (Fully vaccinated student).	3	4	3	36
									Non-COVID-19 Vaccinated student.	4	4	3	48
STUDENT ACTIVITY 08													
NWU Student	Dining halls, Student Centre cafeterias, kiosks and restaurants on campus – accessing and visiting.	Contact with potentially contaminated surfaces. Contact with possible COVID-19 positive person.	Inhalation / contact	5	5	3	75	<ul style="list-style-type: none"> General control measures listed 	COVID-19 Vaccination (Fully vaccinated student).	3	4	3	36
									Non-COVID-19 Vaccinated student.	4	4	3	48
STUDENT ACTIVITY 09													
NWU Student	University residences and Day Houses: INDOOR activities, contact instances, sleeping arrangements, personal hygiene, meal preparation, and engagements forming part of university residences as living and learning spaces .	Contact with potentially contaminated surfaces. Contact with possible COVID-19 positive person.	Inhalation / contact	5	5	3	75	<ul style="list-style-type: none"> General control measures listed Occupancy of rooms as per standard occupation capacity, including single and shared rooms. 	COVID-19 Vaccination (Fully vaccinated student).	3	4	3	36
									Non-COVID-19 Vaccinated student.	4	4	3	48
STUDENT ACTIVITY 10													
NWU Student	Use of INDOOR spaces such as Gymnasiums, sport centres, Arts and Culture venues, recreational halls,	Contact with potentially contaminated surfaces. Contact with possible COVID-	Inhalation / contact	5	5	3	75	<ul style="list-style-type: none"> General control measures listed Where relevant, the relevant department/line function must conduct risk-based assessment if the specific activity is not fully accounted for in this risk assessment. 	COVID-19 Vaccination (Fully vaccinated student).	3	4	3	36

NWU Risk Assessment: Coronavirus (COVID-19)

	etc. for rehearsals, training and preparatory work related to co-curricular activities.	19 positive person.						<ul style="list-style-type: none"> Adherence to additional control measures as identified in the risk-based assessment for a specific activity. 	Non-COVID-19 Vaccinated student.	4	4	3	48
STUDENT ACTIVITY 11													
NWU Students	Use of OUTDOOR spaces for activities including sport activities such as team interaction, practices and matches, as well as arts and culture activities, performances, rehearsals, and social engagements between students.	Contact with potentially contaminated surfaces. Contact with possible COVID-19 positive person.	Inhalation / contact	5	5	3	75	<ul style="list-style-type: none"> General control measures listed. Where relevant, the relevant department/line function must conduct risk-based assessment if the specific activity is not fully accounted for in this risk assessment. Adherence to additional control measures as identified in the risk-based assessment for a specific activity. 	COVID-19 Vaccination (Fully vaccinated student).	3	3	3	27
									Non-COVID-19 Vaccinated student.	5	3	3	45
STUDENT ACTIVITY 12													
NWU Student	Student activities and gatherings in a CONGREGATE setting hosted INDOORS . This includes but is not limited to; sports-, religious-, social-, political-, arts & cultural gatherings in halls, studios, auditoriums, recreational centres/halls, theatres, bars, clubhouses and clubs.	Contact with potentially contaminated surfaces. Contact with possible COVID-19 positive person.	Inhalation / contact	5	5	3	75	<ul style="list-style-type: none"> General control measures listed Additional access control measures implemented where relevant to manage the number of participants present in the venue, this can include ticket sale/event registration, etc. Identification and deployment of COVID-19 Compliance buddies during the event to assist with ensuring compliance by attendees. 	COVID-19 Vaccination (Fully vaccinated student).	3	4	3	36
									Non-COVID-19 Vaccinated student.	4	4	3	48

NWU Risk Assessment: Coronavirus (COVID-19)

STUDENT ACTIVITY 13													
NWU Student	General Academic activities conducted in INDOOR SPACES by students as part of learning, studying, preparation for lectures, tests and practical.	Contact with potentially contaminated surfaces. Contact with possible COVID-19 positive person.	Inhalation / contact	5	5	3	75	<ul style="list-style-type: none"> General control measures listed 	COVID-19 Vaccination (Fully vaccinated student).	3	4	3	36
									Non-COVID-19 Vaccinated student.	4	4	3	48
STUDENT ACTIVITY 14													
NWU Student	Student activities related to Community Engagement as part of Co-Curricular Programme (NOT teaching learning and research), non-NWU owned/controlled premises/facilities (such as site visits, projects, contact engagements).	Contact with potentially contaminated surfaces. Contact with possible COVID-19 positive person.	Inhalation / contact	5	5	3	75	<ul style="list-style-type: none"> General control measures listed Adherence to the control measures implemented as part of transportation service providers (internal and external). The University to conduct risk-based assessments on the relevant activities conducted as part of the community engagement (HIRA done by specific dept. or school). Adherence to identified control measures as per risk-based assessment for specific activity. Adherence to the risk assessments and SOPs as provided by the relevant facility where the community engagement activity is conducted (where relevant). 	COVID-19 Vaccination (Fully vaccinated student).	3	4	3	36
									Non-COVID-19 Vaccinated student.	4	4	3	48
STUDENT ACTIVITY 15													
NWU Student	Students with declared comorbidities: All student activities at NWU	Students with comorbidities: Contact with potentially contaminated surfaces. Contact with possible COVID-19 positive person.	Inhalation / contact	5	5	4	100	<ul style="list-style-type: none"> General control measures listed <p>The following control measures can be implemented on a case-by-case basis:</p> <ul style="list-style-type: none"> Health assessment by medical practitioner or NWU Health Care Centre. Request students to declare health conditions at NWU Health Care Centre and visit centre on specified intervals as per OHP. Reporting of condition, requirements and limitations to Executive Dean, School Director and academic program leader, as well as the relevant Campus Director: Student Life and Director Business and Enterprise Development (BED). NWU CHCC continuously monitoring internal and external COVID-19 trends, cases and exposure risks. 	COVID-19 Vaccination (Fully vaccinated employee).	5	4	3	60
									Non-COVID-19 Vaccinated student.	5	5	3	75