

PROTOCOLS FOR UNIVERSITY RESIDENCES AND THE CATERING SERVICES ENVIRONMENT

Revised and approved by the COVID-19 Transition Task Team on 11.07.2022.

As part of ensuring the business continuity of the North-West University as it relates to Business and Enterprise development, and in particular to the Residence and Catering Services environment, the following protocols are provided. The NWU remains committed towards creating an environment for its staff and students that is healthy and safe.

1 Scope and application

1.1 These protocols must be applied in a manner that is consistent with the:

- 1.1.1 Occupational Health and Safety Act, 85 of 1993;
- 1.1.2 Relevant policies and rules approved by the University Council; and
- 1.1.3 Any of the relevant standard operating procedures and guidelines as approved by the University Management Committee and/or COVID-19 Transition Task Team to manage the risks of COVID-19.

1.2 These protocols enable the continuation of business processes related to the functioning of university residences and the catering services environment of the University.

1.3 **These protocols replace the Protocols for University Residences and the Catering Service Environment dated 19 May 2022 in its entirety.**

1.4 Non-adherence to these protocols by students will be subjected to the relevant disciplinary measures as provided for in the Policy on Student Discipline (2019).

1.5 A student who occupies a room in a NWU university residence during 2022 **must** accept this entire protocol and sign the acceptance page (addendum A) as confirmation of their acceptance thereof.

1.7 These protocols function in conjunction with the Rules of the University Residence a Day Houses of the North-West University (2021)¹, but supersede the residence rules in the event of a possible contradiction.

2 Effective date

These protocols were considered and approved by the COVID-19 Transition Task Team on 11 July 2022 and will be in effect from 12 July 2022 onwards.

3 Health and safety protocol for university residences

All residents and visitors to university residences must observe the non-pharmaceutical health and safety directives mitigating the spread of COVID-19, that includes:

- i. Frequently sanitizing their hands with either sanitizer or hand washing;
- ii. Observing “sneezing and coughing etiquette”;
- iii. Maintain sufficient ventilation in the venue and/or room where they are gathered; and
- iv. Wash your hands regularly and at least every time you visit the rest room and/or places frequently used by other students.

¹ Referred to as: residence rules.

4 University residence facilities management

- 4.1 Frequently used surfaces and spaces such as the door handles, kitchen surfaces, shared bathrooms and communal living areas should be cleaned and sanitized regularly as per NWU cleaning and sanitising protocol.
- 4.2 Hand sanitizers will be placed at frequently used access points to university residences, as well as additional temporary hand sanitizers placed in communal and frequently used areas.
- 4.3 All available ventilation must be utilized, that includes the opening of windows, doors and sliding doors where available and possible.
- 4.4 A sanitisation routine must be performed at regular intervals after the computer room was used by students and / or staff members as per NWU cleaning and sanitising protocol.

5 Residence Life

Residence Life activities, programmes and initiatives are permitted and managed in accordance with the [COVID-19 Standard Operating Procedures for Student Life Co-Curricular Activities, Programmes and Events](#), and must where relevant be planned and executed in accordance with these protocols

6 Reporting on COVID-19

- 3.8.1 Students who experience and/or exhibit any Covid-19 symptoms will be assisted in line with the Standard Operating Procedures (refer to paragraph 9 below) that have been developed for infection control measures.
- 3.8.2 Such students MUST, without delay, report these symptoms to the House Parents, the Campus Health Care Centre and relevant House Committee members for further assistance.

7 Dining Halls, Cafeterias and Food & Beverage Facilities

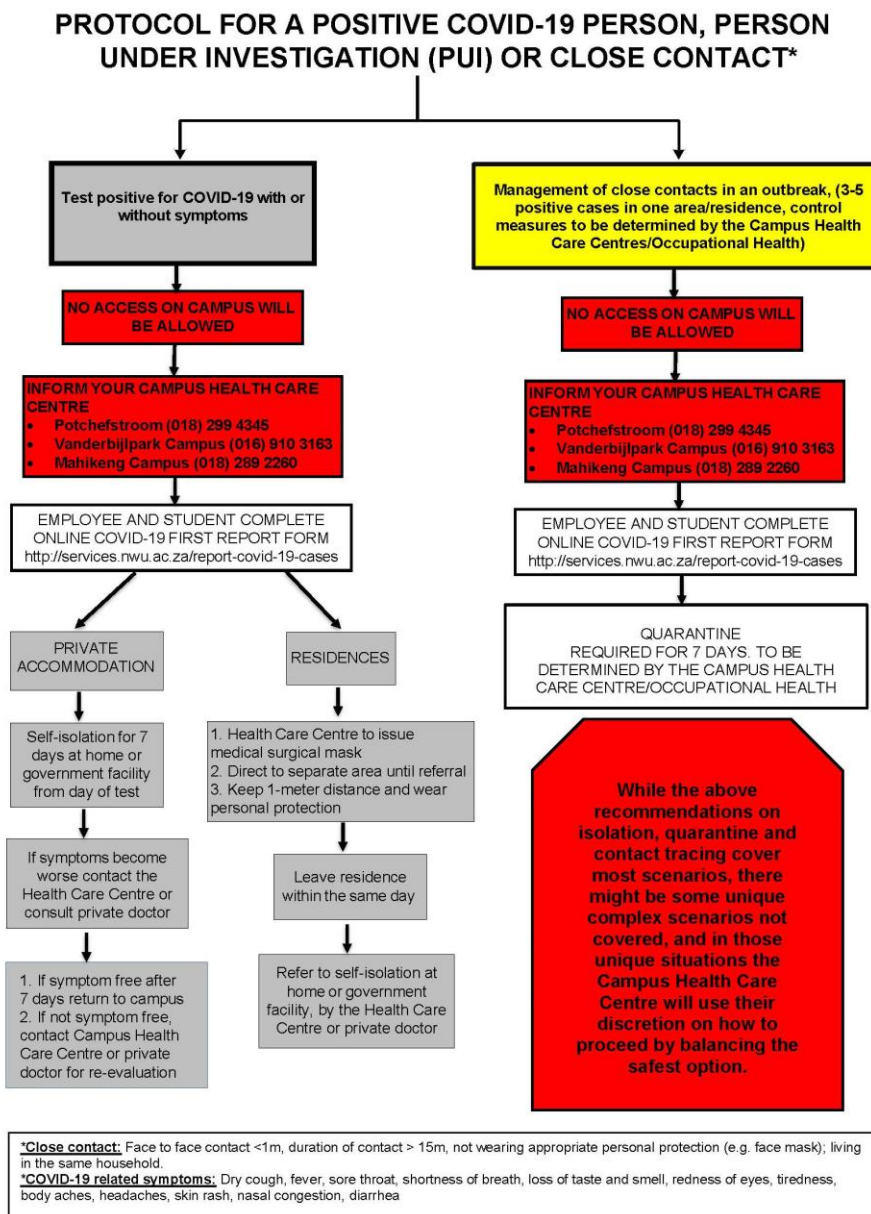
Entrances to all dining halls, cafeterias and food & beverage facilities will be equipped with hand sanitisers. Students and staff members (customers) who enter the facilities are encouraged to sanitise their hands before entering.

8 Bus Services

Arrangements for the bus services on the Vanderbijlpark campus are in place, based on the number of students in the off-campus university residences.

9 Standard Operating Procedure for possible COVID-19 infection

The following flow diagram illustrates the actions required when a student or staff member believes that they are infected:



Mahikeng Campus	
Building:	Building B6
Telephone:	(018) 389 2907
Fax:	(018) 389 2034
Potchefstroom Campus	
Building	Building E16
Telephone:	(018) 299 4345 (018) 299 4372
Fax:	(018) 299 4291
Vanderbijlpark Campus	
Building:	Building 25
Telephone:	(016) 910 3163
Fax:	23544260@nwu.ac.za

Addendum A

PROTOCOLS FOR UNIVERSITY RESIDENCES AND THE CATERING SERVICES ENVIRONMENT

DATED 11 July 2022, EFFECTIVE FROM 12 July 2022

I, _____

Full Name and Surname

Student number

University Residence

Room Number

Unique Bed Number [UBN]

I understand the above-mentioned protocols and accept the responsibility it places on me to adhere to all the health and safety requirements. I understand that the protocols have been devised and are implemented to keep all the students, staff, and other parties on the NWU premises safe. I further understand that if I am placed in a shared room this places an even higher responsibility on me to adhere to all the safety protocols to keep my roommate and myself safe.

Signature

Date