

POTCHEFSTROOM CAMPUS
EDUCATION SCIENCES

POSTGRADUATE PROGRAMMES: PGCE

J A A R B O E K

2017

Y E A R B O O K



NWU[®]

Address all correspondence to:

The Registrar
North-West University
Potchefstroom Campus
Private Bag X6001
Potchefstroom
2520

Tel: (018)299-1111/2222

Fax: (018)299-2799

Internet: <http://www.nwu.ac.za>

PLEASE MENTION YOUR UNIVERSITY NUMBER IN ALL CORRESPONDENCE.

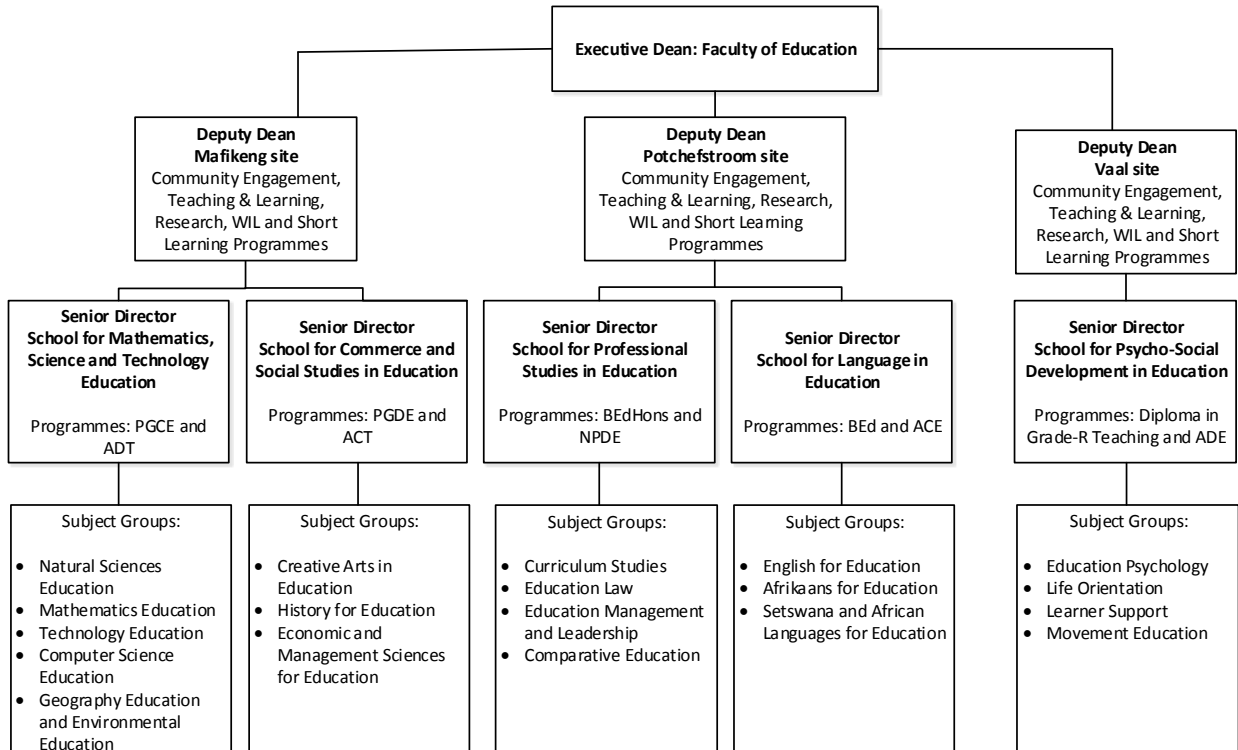
The General Academic Rules of the University, to which all students have to subject themselves and which apply to all the qualifications offered by the University, appear in a separate publication and are available on the web page at: <http://www.nwu.ac.za/e-yearbook-index>.

Please note: Although the information in this Calendar has been compiled with the utmost care and accuracy, the Council and the Senate of the University accept no responsibility whatsoever for errors that may occur. Before students finally decide on the selection of modules, they must consult the class timetable. If a clash occurs in the planned selection of a student, the relevant module combination is not permitted.

Table of Contents

OP.1.1	SCHOOLS IN THE FACULTY OF EDUCATION SCIENCES.....	VI
OP.1.2	QUALIFICATIONS, PROGRAMMES AND CURRICULA	VII
OP.2	FACULTY RULES	8
OP.2.1	AUTHORITY OF THE GENERAL RULES	8
OP.2.2	FACULTY-SPECIFIC RULES.....	8
OP.2.2.1	Admission requirements.....	8
OP.2.2.2	Simultaneous registration for more than one qualification.....	9
OP.2.2.3	Calculation of participation marks.....	9
OP.2.2.4	Admission to examinations.....	9
OP.2.2.5	Subminimum for examination.....	9
OP.2.2.6	Examination opportunities.....	9
OP.2.2.7	Access to marked examination work.....	10
OP.2.2.8	Pass requirements.....	10
OP.2.2.9	Modules and credits.....	10
OP.2.2.10	Repetition of modules.....	10
OP.2.2.11	Termination of studies.....	11
OP.2.2.12	Other rules.....	11
OP.2.3	WARNING AGAINST PLAGIARISM.....	11
OP.2.4	CAPACITY STIPULATION	11
OP.2.5	RECOGNITION OF PRIOR LEARNING	11
OP.2.6	PROGRESS REQUIREMENTS	11
OP.2.7	ADDITIONAL MODULES	12
OP.2.8	RULES FOR THE POST GRADUATE CERTIFICAT IN EDUCATION (PGCE)	13
OP.2.8.1	Duration (minimum and maximum duration).....	13
OP.2.8.2	Admission requirements for the qualification.....	13
OP.2.8.3	List of modules.....	15
OP.2.8.4	Curriculum: O160P – PGCE in Senior & Further education and training phase.....	18
OP.3	MODULE OUTCOMES.....	21

To be confirmed by the Council of the NWU



Faculty of Education

Information regarding the new office bearers in the merged faculty that will come into effect from 2017 was not available when the calendar was compiled. Please consult the NWU website for the new structure and names of the members of management.

Management Committee of the Faculty

Executive Dean (*Chairperson*)

Deputy Deans

Senior School Directors

Directors of Research Entities

Directors

Administrative Managers

- Academic processes
- Administrative processes
- Quality assurance
- Financial Human resources

Faculty Board

Executive Dean (*Chairperson*)

Deputy Deans

Senior School Directors

Directors of Research Entities

Directors

Faculty representatives in the Institutional Senate

Research professors of schools and research entities

Representative of the Professoriate

Programme leaders:

- MEd and PhD
- BEdHons
- PGDE (Postgraduate Diploma en Education)
- PGCE (Postgraduate Certificate in Education)
- BEd
 - Foundation Phase
 - Intermediate Phase
 - Senior and Further Education and Training Phase and Technology
- ADE (Advanced Diploma in Education)
- ACE (Advanced Certificate in Education)

- NPDE (National Professional Diploma in Education)
- Diploma in Grade R Teaching
- ACT (Advanced Certificate in Teaching)
- Short learning programmes

Subject group chairpersons

Chairpersons of Faculty Board committees

Manager: Division of Professional Development

Administrative Managers

- Academic processes
- Administrative processes
- Quality assurance
- Financial Human resources

Student representatives

Representative of the Faculty of Natural Sciences

Representative of the Faculty of Health Sciences

CONTACT DETAILS FOR THE FACULTY

- Potchefstroom site
 - Telephone number: 018 299 1766
 - E-mail address: Edu-EnquiryPotch@nwu.ac.za
 - Website: <http://www.nwu.ac.za/faculty-education-sciences>
- Mafikeng site
 - Telephone number: 018 389 2214
 - E-mail address: MCEducation@nwu.ac.za
 - Website: <http://www.nwu.ac.za/content/welcome-faculty-education>
- Vaal site
 - Telephone number: 016 910 3060
 - E-mail address: VTC-Education-Info@nwu.ac.
 - Website: <http://www.nwu.ac.za/content/vaal-triangle-campus-faculty-humanities-school-education-sciences-directors-welcome>

Schools in the Faculty

To be confirmed by the Council of the NWU

OP.1.1 SCHOOLS IN THE FACULTY OF EDUCATION SCIENCES

School for Natural Sciences in Education	<ul style="list-style-type: none">○ Natural Sciences Education○ Mathematics Education○ Technology Education○ Computer Science Education○ Geography Education and Environmental Education
School for Commerce and Social Studies in Education	<ul style="list-style-type: none">○ Creative Arts in Education○ History for Education○ Economics and Management Sciences for Education
School for Professional Studies in Education	<ul style="list-style-type: none">○ Curriculum Studies○ Education Law○ Education Management○ Comparative Education
School for Languages in Education	<ul style="list-style-type: none">○ English for Education○ Afrikaans for Education○ Setswana and African Languages for Education
School for Psycho-Social Development in Education	<ul style="list-style-type: none">○ Education Psychology○ Life Orientation○ Learner Support○ Movement Education

OP.1.2

QUALIFICATIONS, PROGRAMMES AND CURRICULA

The University has the authority to confer the following degrees, certificates and diplomas offered by the Faculty of Education Sciences:

- Doctor of Philosophy (PhD)
- Master of Education (MEd)
- Bachelor of Education Honours (BEdHons)
- Postgraduate Certificate in Education (PGCE)
- Bachelor of Education (BEd)
- Diploma in Grade R Teaching
- Advanced Diploma in Education (ADE): Special needs
- National Professional Diploma in Education (NPDE). (Programme is phasing out. Pipeline students till 2018)
- Advanced Certificate in Education (ACE) (Programme is phasing out. Pipeline students till 2018).

OP.2 FACULTY RULES

OP.2.1 AUTHORITY OF THE GENERAL RULES

Programme-specific requirements, procedures and structures are detailed in the respective programme documents and included in the annual calendars of the Faculty. Where applicable, reference is made to the Faculty Rules as detailed in the document.

The faculty rules applicable to the different qualifications, programmes and curricula offered by the Faculty and contained in this faculty calendar are subject to the General Academic Rules of the University, as determined from time to time by the Council of the University on recommendation by the Senate. The faculty rules should therefore be read in conjunction with the General Academic Rules.

Each programme's structure, method of delivery and presentation are included in the respective programme documents, which are subject to the policy laid down by the Institutional Committee for Academic Standards (ICAS) of the NWU and consistent with the requirements of the Council on Higher Education (CHE), the Higher Education Quality Committee (HEQC), the Department of Higher Education and Training (DoHET) and the South African Qualifications Authority (SAQA).

OP.2.2 FACULTY-SPECIFIC RULES

The **teaching policy** of the Faculty of Education Sciences is in accordance with the vision and mission of the North-West University.

Procedures regarding quality assurance in the Faculty (Teaching-Learning Policy and Assessment and Moderation Policy) are available on our webpage at:

- a) http://www.nwu.ac.za/sites/www.nwu.ac.za/files/files/i-governance-management/policy/8P-TL_e.pdf
- b) http://www.nwu.ac.za/sites/www.nwu.ac.za/files/files/i-governance-management/policy/8P-8.1.7-assessment_e.pdf

The **research policy** of the Faculty of Education Sciences is in accordance with the vision and mission of the North-West University. The development of academic scholarship is a priority as is the maintenance of relevant, innovative, leading and focused research to address the challenges faced by education both nationally and internationally.

The webpage for the Research Focus Area of the Faculty of Education Sciences: <http://www.nwu.ac.za/faculty-education-sciences-l-research>

OP.2.2.1 Admission requirements

The admission requirements for all formal academic qualifications offered by the University are set out in the Admission Policy as approved by Senate and Council: (http://www.nwu.ac.za/sites/www.nwu.ac.za/files/files/i-governance-management/policy/7P-7.1.1_Admissions_e.pdf)

OP.2.2.2 Simultaneous registration for more than one qualification

A student may not be registered simultaneously for more than one qualification within the University without prior written permission granted by the campus registrar concerned on recommendation by the dean or deans concerned.

OP.2.2.3 Calculation of participation marks

- a) The participation mark for a module is calculated from marks obtained in tests, assignments, practical and/or research assignments. Calculation of participation marks is programme-, module- and mode of delivery-specific.
- b) The ratio between theory and practical work for calculation of the participation mark for a module is as explained in the relevant study guide.

OP.2.2.4 Admission to examinations

- a) Admission to the examination in any module requires a proof of participation or a participation mark (depending on the requirements of the module). (General Academic Rules A2.4.2, undergraduate degree; A3.4.2, honours degree; A4.4.2, MEd; and A5.4.2, PhD.)
- b) A proof of participation or a participation mark, which allows admission to the examination, will only be issued once a student has complied with the requirements for the module concerned to the satisfaction of the school director in consultation with the relevant subject group chairperson/programme leader. The requirements are stipulated in the study guide for the module concerned and under the module outcomes in this calendar.

OP.2.2.5 Subminimum for examination

The subminimum for examinations in all modules is 40% except where a higher subminimum is provided for in faculty rules.

OP.2.2.6 Examination opportunities

The examination opportunities and the relevant rules are determined in accordance with General Academic Rules A2.4.4 (undergraduate degree), A3.4.4 (honours degree), A4.4.6 (MEd) and A5.4.6 (PhD).

According to Academic Rule A.2.4.2, any student who has obtained the required proof of participation and/or participation mark as prescribed will be admitted to the examination in the module concerned.

All PGCE modules allow for a second examination opportunity.

OP.2.2.7 Access to marked examination work

A student may apply to the school director to view the answer paper and the memorandum in the presence of the lecturer and the subject chairperson concerned (refer to Academic Rule A.2.4.9).

Application to view answer papers must be made within a maximum period of five working days after the marks have been made available.

OP.2.2.8 Pass requirements

- a) The stipulations in Academic Rules A.2.4.3.1, A.2.4.3.2, A.2.4.3.3 and A.2.4.3.4, and all the subparagraphs apply.
- b) The module mark is calculated according to the ratio between the participation mark and the examination mark as set out under the module outcomes in the relevant calendar.
- c) The module mark required for a pass in a module in which examinations are written is 50%.
- d) The subminimum for all modules in which examinations are written is 40% (Academic Rule A.2.4.3.3), unless stated otherwise in the rules of specific programmes and curricula.
- e) Adjustment of the module mark for a first-semester module in which an examination was written but not passed may be considered according to the stipulations of Academic Rule A.2.4.3.4.
- f) Academic Rule A.2.5.2 stipulates the requirements for passing a module/curriculum/qualification with distinction.
- g) A pass is obtained for a curriculum once all the modules of the programme have been passed individually (Academic Rule A.2.5.1).

OP.2.2.9 Modules and credits

- a) Subjects are presented according to modules, to which a certain number of credits are allocated.
- b) Each module has a code and a descriptive name, e.g. AFRD 511 – Afrikaans Methodology.
- c) Each module has a certain weight, known as a credit.
- d) Each module is to be passed individually.
- e) Programme-specific rules (apply according to the relevant calendar).
- f) Mode of delivery-specific rules (apply according to the relevant calendar).

OP.2.2.10 Repetition of modules

Should a student fail an examination in a specific module, he/she is required to repeat the module in accordance with Faculty Rule 3.3.2.4

All modules in the programme allow for a student to utilise two examination opportunities in accordance with Academic Rules A.2.4.4.1, A.2.4.4.2 and A.2.4.4.3.

According to Academic Rule A.2.4.4.5, a student who requires one more module in order to complete a qualification may apply to the dean in writing to grant a final assessment opportunity on condition that the student has registered for and been admitted to the module.

OP.2.2.11 Termination of studies

A student's studies may be terminated in accordance with the stipulations of General Academic Rule A.2.4.8 (undergraduate), A.3.4.6 (honours degree), A.4.4.10 (MEd) and A.5.4.10 (PhD).

OP.2.2.12 Other rules

This qualification can only be taken full-time.

Directed observation

Before starting the course a student must attend an approved school for preparatory work related training for at least two weeks.

Work-integrated Learning

- a) All students must participate in the **work integrated learning** program. All students must complete a total of 8 weeks (including directed observation) before a certificate will be issued.
- b) **Work integrated learning** involves additional costs that must be borne by the student. These costs are not included in the tuition fees.

OP.2.2.13 Obtaining language endorsements

All students must obtain two (2) language endorsements. Students (non-mother tongue speakers) receive an a, e or t automatically due to the fact that they passed matric and completed a first degree. Non-mother tongue speakers wishing to qualify for an A, E or T must report for a language competency test. Mother tongue speakers must also present themselves for an automatic A, E or T. Learners who have attained at least 24 credits in the mother / first language receive an A, E, T etc.

OP.2.3 WARNING AGAINST PLAGIARISM

Assignments are individual tasks and not group activities (unless explicitly indicated as group activities). For further details see:

http://www.puk.ac.za/beheer-bestuur/beleid-reels/index_e.html

OP.2.4 CAPACITY STIPULATION

Please take cognizance of the fact that, owing to specific capacity constraints, the University reserves the right to select candidates for admission to certain fields of study. This means that prospective students who comply with the minimum requirements may not necessarily be admitted to the relevant courses.

OP.2.5 RECOGNITION OF PRIOR LEARNING

Recognition of prior learning is done in accordance with Academic Rule A.2.3.2 (A.2.3.2 – A.2.3.2.4). Any student who fails a module must repeat the module in order to obtain a new participation mark. Classes must be attended and no exemption from class attendance will be granted in the event of timetable clashes.

OP.2.6 PROGRESS REQUIREMENTS

Students in their final year who have not passed all the prescribed modules of the curriculum thus far may register for the outstanding modules provided these

do not exceed 32 credits per semester. Classes must be attended and no exemption from class attendance will be granted in the event of timetable clashes.

OP.2.7 ADDITIONAL MODULES

A student may register for additional modules (32 credits per semester) on condition that he/she has thus far passed the prescribed modules of the curriculum. Classes must be attended and no exemption from class attendance will be granted in the event of timetable clashes.

Students who have not passed all the prescribed modules of the curriculum may enrol for 16 additional credits per semester. Classes must be attended and no exemption from class attendance will be granted in the event of timetable clashes.

OP.2.8 RULES FOR THE POST GRADUATE CERTIFICATE IN EDUCATION (PGCE)

The PGCE serves as a professional capping qualification for candidates who have completed a relevant 360 or 480-credit Bachelor's degree and wish to enter the teaching profession.

Students, who obtained this qualification with its focused vision on classroom practice, will be able to fulfil all the contextual roles and competencies of an effective educator.

With this certificate an educator can teach from Grades 7 to 12.

OP.2.8.1 Duration (minimum and maximum duration)

The minimum duration of study is one year and the maximum duration is two years.

OP.2.8.2 Admission requirements for the qualification

An undergraduate university degree with two recognised school subjects or a qualification of 360 credits at NQF level 6 and that includes at least two recognised school subjects.

Students must also be able to take two methodology subjects in order to obtain the qualification. The curriculum for the qualification is structured as follows:

(A recognised school subject is one included in the Department of Basic Education's official list of school subjects.)

- a recognised school subject at level 3 + a recognised school subject at level 1

In the event of a choice between methodologies for academic subjects already obtained for a prior qualification, a student must select from these the two subjects that were obtained at the highest level. In the case of Languages, the relevant language subject must be at year level 3.

Exemptions:

- A student who wants to take **Life Sciences** as methodology need to present one of the following subjects Botany, Zoology or Physiology on level three and another on level 2 for admission to the PGCE.

Students who only have Physiology or Botany or Zoology as main subject are provisionally admitted to the PGCE until they passed maximally three (3) additional modules, namely LIFE311, LIFE121 and/or LIFE211. (The number of additional subjects will be determined individually by the Faculty of Education Sciences.) Students who only qualify for Life Sciences as school subject will receive the PGCE with Methodology of Life Sciences and Methodology of the Learning Area Natural Sciences. These students must register for LIFD511 and LAND521 as well as LAND411 and ADSD521.

- A student who wants to take **Physical Sciences** as methodology need to present one of the subjects Chemistry or Physics on level three and the other one on at least on level 1. Alternatively, Chemistry and Physics both on level 2 can also be used for admission. Students who only qualify for Physical Sciences as school subject must register for PHSD511 and LAND521 as well as LAND411 and ADSD521. These students will receive

the PGCE with Methodology of Physical Sciences and Methodology of the Learning Area Natural Sciences.

- A student who wants to take the Methodology of Mathematics must have completed Mathematics on level 2 or otherwise Mathematics on level 1 with one of the following on level 2: Statistics, Mathematical Statistics, Applied Mathematics and Financial Mathematics.

A student with only Mathematics as main subject must register for MATD511, MATD 521 as well as MATD411 and ADSD521.

- A student who wants to take the Methodology of Life Orientation must have two of the following subjects on degree level: Sociology, Psychology, Political Studies, Human Movement Science, Labour -and Industrial studies, Human Rights and Ethics and Nutrition. The student must already have a second school subject on degree level for the second methodology.
- A student who wants to take the Methodology of Languages must have completed it on level 3
- Students who have as yet not completed their first degree may be admitted by way of exception. They have to make a special application to the Director for this admission.

Remark:

1. The PM 40 % indicates participation marks of 40 % during the semester.
2. Students in possession of B.Mus and BA Music and Society take LAAD511 and LAAD521 and ADSD521. These students receive exemption for Music subject methodology (MSVD511) on the grounds of modules already passed in B.Mus and BA Music and Society

OP.2.8.3 List of modules

Module code	Descriptive name	Prerequisites	Credits
ACCD511	Accounting Methodology	Accounting level 1	12
ADSD521	Additional subject methodology: Creativity for Educators		12
AFRD511	Afrikaansmetodiek	Afrikaans level 3	12
AFRD521	Afrikaansmetodiek	Afrikaans level 3	12
AFTB521	Afrikaanstaalbevoegdheid		1
ARTD511	Art Methodology	History of Art and Fine- or Graphical Art level 2. If a student only has History of Art, proof of practical skills by means of a portfolio must be submitted. If find that a student does not possess the necessary practical skills, the following additional modules need to be passed; ARTE221, ARTE311, ARTE321.	12
BSTD511	Business Studies Methodology	Business Management level 1	12
CATD511	Computer Applications Technology Methodology	Information Technology / Computer Science level 1	12
CTED521	Civil Technology Methodology	TTED511	12
COMF411	Computers in Education		8
ECOD511	Economics Methodology	Economics level 1	12
EDCC511	Education Theory		8
EDCC512	Assessment		8
EDCC513	Professional Studies		8
EDCC521	Educational Psychology		12
EDCC522	Education Law, Systems and Management		12
EDCC523	Professional Studies		8
EGDD511	Engineering Graphics and Design Methodology	Graphics or any other relevant modules level 2	12
EGDD521	Engineering Graphics and Design Methodology		12

ENGD511	English Methodology	English level 3	12
ENGD521	English Methodology	English level 3	12
ENTB521	English Language Proficiency		1
ETED521	Electrical Technology Methodology	TTED511	12
GEOD511	Geography Methodology	Geography level 1	12
HISD511	History Methodology	History level 1	12
INTD511	Information Technology Methodology	Information Technology / Computer Science level 2	12
LAAD511	Learning Area Arts and Culture Methodology		12
LAAD521	Learning Area Arts and Culture Methodology		12
LABD521	Learning Area Economic and Management Sciences Methodology		12
LAND521	Learning Area Natural Sciences Methodology		12
LASD521	Learning Area Social Sciences Methodology		12
LIFD511	Life Sciences Methodology	One of Botany, Zoology or Physiology on level 3 and the other on level 2. Students who only have Physiology or Botany or Zoology as main subject are provisionally admitted to the PGCE until they passed maximally three (3) additional modules, namely LIFE 311, LIFE 121 and/or LIFE211.	12
LIFF521	Life Skills		12
LLOD511	Learning Area Life Orientation Methodology	Psychology +Movement Sciences+Sociology on level 2 (see further requirements under 2.8.2)	12
LLOD521	Learning Area Life Orientation Methodology		12
MATD511	Mathematics Methodology	Mathematics level 2 (see 2.8.2)	12
MATD521	Mathematics Methodology	Mathematics level 2	12
MSVD511	Music Methodology	B.Mus	12

MTED521	Mechanical Technology Methodology	TTED511	12
PHSD511	Physical Sciences Methodology	Physics level 3 + Chemistry level 1 OR Physics level 1 + Chemistry level 3 OR Physics level 2 + Chemistry level 2	12
RSVD511	Religion Studies Methodology	Any religion on level 1, Social Anthropology	12
SEMD511	Setswana Methodology (Mother Tongue)	Setswana level 2	12
SEMD521	Setswana Methodology (Mother Tongue)	Setswana level 2	12
SEND511	Setswana Methodology (Non Mother Tongue)	Setswana level 2	12
SEND521	Setswana Methodology (Non Mother Tongue)	Setswana level 2	12
SSTB521	Sesotho Language Proficiency		1
TECD521	Technology Methodology	VWVD511	12
TGNO511	Technology		8
TGNO521	Technology		8
TRVD511	Tourism Methodology	Tourism level 1	12
TTED511	FET Technology Methodology	Technical qualification with Electrical-, Mechanical or Civil Engineering on level 2	12
TWTB521	Setswana Language Proficiency		1
VRTB521	Foreign Language Proficiency		1
VWVD511	Consumer Studies Methodology	B.Sc Consumer Sciences	12

OP.2.8.4 Curriculum: O160P – PGCE in Senior & Further education and training phase

OP.2.8.4.1 Curriculum outcomes

After completion of the programme students should be able to:

- develop and demonstrate a deep knowledge and understanding of education theory and practice
- integrate education theory and practice with applied competence
- demonstrate and assess the knowledge base that underpins the planning, development and implementation of learning programmes in the Senior and FET phases and act as assessor and learning facilitator;
- develop and demonstrate skills, attitudes and values to become responsible, independent and contributing members of the professional educational community in a diverse and changing national and international context.
- develop and demonstrate critical, creative and reflective problem solving skills within educational and societal context.

OP.2.8.4.2 Compilation of curriculum O160P

Semester 1			Semester 2		
Module code	Module name	Cr	Module code	Module name	Cr
Fundamental modules			Fundamental modules		
COMF411	Computers in Education	8	LIFF521	Life Skills	12
TGNO511	Technology	8	TGNO521	Technology	8
Core modules			Core modules		
EDCC511	Education Theory	8	EDCC521	Educational Psychology	12
EDCC512	Assessment	8	EDCC522	Education Law, Systems and Management	12
EDCC513	Professional Studies	8	EDCC523	Professional Studies	8
			Choose two of the following		
			AFTB521	Afrikaanstaalbevoegdheid	1
			ENTB521	English Proficiency Language	1
			TWTB521	Setswana Proficiency Language	1
			SSTB521	Sesotho Proficiency Language	1

TWO of the following methodologies			Continuation of the selected methodologies		
ACCD511	Accounting Methodology	12	LABD521 or ADSD521	Learning Area Economic and Management Sciences or Additional Subject Methodology	12
AFRD511	Afrikaansmetodiek	12	AFRD521	Afrikaansmetodiek	12
ARTD511	Art Methodology	12	LAAD521	Learning Area Arts and Culture Methodology	12
BSTD511	Business Studies Methodology	12	LABD521 or ADSD521	Learning Area Economic and Management Sciences or Additional Subject Methodology	12
CATD511	Computer Applications Technology Methodology	12	TECD521	Technology Methodology	12
ECOD511	Economics Methodology	12	LABD521 or ADSD521	Learning Area Economic and Management Sciences or Additional Subject Methodology	12
EGDD511	Engineering Graphics and Design Methodology	12	EGDD521	Engineering Graphics and Design Methodology	12
ENGD511	English Methodology	12	ENGD521	English Methodology	12
GEOD511	Geography Methodology	12	LASD521 or ADSD521	Learning Area Social Sciences Methodology or Additional Subject Methodology	12
HISD511	History Methodology	12	LASD521 or ADSD521	Learning Area Social Sciences Methodology or Additional Subject Methodology	12
INTD511	Information Technology Methodology	12	TECD521	Technology Methodology	12
LAAD511	Learning Area Arts and Culture Methodology	12	LAAD521	Learning Area Arts and Culture Methodology	12
LIFD511	Life Sciences Methodology	12	LAND521 or ADSD521	Learning Area Natural Sciences Methodology or Additional Subject Methodology	12
LLOD511	Learning Area Life Orientation Methodology	12	LLOD521 or ADSD521	Learning Area Life Orientation Methodology or Additional Subject Methodology	12
MATD511	Mathematics Methodology	12	MATD521	Mathematics Methodology	12

MSVD511	Music Methodology	12	ADSD521	Additional Subject Methodology	12
PHSD511	Physical Sciences Methodology	12	LAND521 or ADSD521	Learning Area Natural Sciences Methodology or Additional Subject Methodology	12
RSVD511	Religion Studies Methodology	12	LLOD521 or ADSD521	Learning Area Life Orientation Methodology or Additional Subject Methodology	12
SEMD511	Setswana Methodology (Mother Tongue))	12	SEMD521	Setswana Methodology (Mother Tongue))	12
SEND511	Setswana Methodology (Non Mother Tongue))	12	SEND521	Setswana Methodology (Non Mother Tongue))	12
TRVD511	Tourism Methodology	12	LABD521 or ADSD521	Learning Area Economic and Management Sciences or Additional Subject Methodology	12
TTED511	FET Technology Methodology	12	CTED521 or ETED521 or MTED521	Civil Technology Methodology Electrical Technology Methodology Mechanical Technology Methodology	12
VWVD511	Consumer Studies Methodology	12	TECD521	Technology Methodology	12
TOTAL CREDITS FOR THE CURRICULUM					142

OP.3 MODULE OUTCOMES

Module code: ACCD511	Semester 1	NQF-level: 6 pending 7
Title: Accounting Methodology		
Module outcomes: On completion of this module the student should be able to:		
<ul style="list-style-type: none"> • have a well-rounded and systematic knowledge base regarding lesson planning, learner programme development, teaching aids and teaching management of the methodologies of Accounting; • have an informed base of understanding of key terms, rules, concepts, established principles and theories regarding the presentation of Accounting; • be able to gather, organise, make a critical analysis and interpret information, to communicate information coherently and reliably, both individually or as part of a group; and • be able to select information and develop the necessary presentation skills using appropriate technologies according to generally accepted accounting practice (GAAP). 		
Method of delivery: Full-time		
Methods of assessment: Continuous assessment 50 % 1x3 hour written examination 50 %		

Module code: ADSD521	Semester 2	NQF-level: 6 pending 7
Title: Additional Subject Methodology: Creativity for Educators		
Module outcomes: On completion of this module the student should be able to:		
<ul style="list-style-type: none"> • demonstrate a comprehensive and systematic knowledge of creative teaching; • demonstrate an instructive and analytical comprehension of principles and theories relating to creative teachers, learners and the classroom, of critical analysis, synthesis and the evaluation of quantitative and qualitative information in this regard; • professionally present academic information effectively, using relevant IT skills; • communicate coherently and reliably in individual or group situations; and • use the knowledge and skills acquired in this module to teach any subject creatively, effectively and according to ethically based standards and values within the Outcomes-based Education framework. 		
Method of delivery: Full-time		
Methods of assessment: Continuous assessment 50 % 1x2 hour written examination 50 %		

Modulekode: AFRD511	Semester 1	NKR-vlak: 6 hangende 7
Titel: Afrikaansmetodiek		
Module-uitkomst: Na voltooiing van die module moet die student in staat wees om:		
<ul style="list-style-type: none"> • leermateriaal en geïntegreerde leerderaktiwiteite te kan saamstel om huistaal- en addisionele taal leerders te begelei in die bereiking van gestelde leeruitkomst; • om gepaste assesseringsvorme, deur middel waarvan leerders in graad 7-12 se voldoening aan bepaalde assesseringstandaarde gemeet kan word, te kan implementeer; • verworwe kennis oor die interpretasie en implementering van die nasionale skoolkurrikulum te kan gebruik om geïntegreerde lesse saam te stel; en • om die voorskrifte van relevante departementele dokumente in breë trekke in ag te neem by die uitvoering van portefeulje-opdragte oor verskillende fasette van die onderrig van Afrikaans. 		
Metode van aflewering: Voltyds		
Assesseringsmetodes: Deurlopende assessering 50 1x3 uur geskrewe eksamen 50 %		

Modulekode: AFRD521	Semester 2	NKR-vlak: 6 hangende 7
Titel: Afrikaansmetodiek		
Module uitkomst: Na voltooiing van die module moet die student in staat wees om: <ul style="list-style-type: none"> • met insig en in fyner besonderhede uitvoering te gee aan die voorskrifte van relevante departementele dokumente wanneer geïntegreerde lesse vir leerders in die Senior Fase saamgestel word én wanneer verslag gedoen word van leerdervordering; • departementele voorskrifte ten opsigte van die samestelling van werkskedules, assesseringsprogramme en lesbeplanning vir die onderrig van Afrikaans aan leerders in Gr. 7-12 te kan uitvoer; en • verskillende handboeke en ander soorte leermateriaal te kan beoordeel ten opsigte van die geskiktheid daarvan vir bepaalde leerdergroepe en bepaalde onderrigsituasies. 		
Metode van aflewering: Voltyds		
Assesseringsmetodes: Deurlopende assessering 50 1x3 uur geskrewe eksamen 50 %		

Module code: ARTD511	Semester 1	NQF-level: 6 pending 7
Title: Art Methodology		
Module outcomes: On completion of this module the student should be able to: <ul style="list-style-type: none"> • prove that he/she has reached a broad and significant knowledge of and insight into art-theoretical aspects and subject during the completion of his/her degree; • apply this knowledge and insight to all areas of art history and theory, in a teaching and learning environment in a critical, sensible and integrated way, in both the Senior Phase/FET and the learning area Arts and Culture; • critically evaluate and analyse different models of art education, and apply these models in a competent and independent way in order to contribute to the comprehension and enjoyment of the subject (Micro-lessons, class presentations and practical teaching); • prove that he/she has reached an advanced level of technical and practical skills and knowledge, and that he/she can apply this knowledge to the advantage of the practical assignments and products of learners, and also prove that he/she can plan and manage such tasks within a realistic time span, using available space and materials within the context of a teaching/learning situation in the Senior Phase; • show an ability to apply the specific didactical details of Art (Senior Phase) in a lesson, and to prove an ability to plan and use integrated and relevant components of Art in the FET/Senior Phase and to use it within the context of the NCS (Class presentations, assignments, exams, micro-lessons and practical teaching); • evaluate art works, theories and models of art analysis, according to a sound value system, taking into account the sensitivity of certain components of art, cultural differences and actualities; proving a capacity and competency to choose subject content and lessons based on ethical and responsible behaviour, in Senior Phase/FET as well as learning area Arts and Culture; and • prove that he/she has a well-established outlook on life and on the world that will be reflected in their ability to apply an inclusive and integrated method of art teaching within a culturally and linguistically diverse education system (micro-lessons, practical teaching, class presentations, exams, research and assignments). 		
Method of delivery: Full-time		
Methods of assessment: Continuous assessment 50 % 1x3 hour written examination 50 %		

Module code: BSTD511	Semester 1	NQF-level: 6 pending 7
Title: Business Studies Methodology		
Module outcomes: On completion of this module the student should be able to: <ul style="list-style-type: none"> • demonstrate a comprehensive and systematic knowledge base of the National Curriculum Statement applicable to Business Studies in the FET phase, teacher portfolios, learning programmes and assessment; • identify themes relevant to the National Curriculum Statement applicable to Business Studies in the FET phase and plan activities supporting the coherent understanding of concepts, ideas, theories, principles and rules; • use unknown and abstract information in this regard by using graphs and theory driven arguments; effectively use IT skills to collect, organise, critically analyse and to interpret; • demonstrate problem-solving abilities to plan and present lessons for specific application to Business Studies, using appropriate technologies, unknown and abstract information, graphs and theory driven arguments and IT skills to collect, organise, critically analyse and to interpret, giving evidence of theoretical underpinning; and • effectively communicate Business Studies didactical aspects ethically, coherently and reliably to learners in the classroom situation by using individual or group methods. 		
Method of delivery: Full-time		
Methods of assessment: Continuous assessment 50 % 1x3hour written examination 50 %		

Module code: CATD511	Semester 1	NQF-level: 6 pending 7
Title: Computer Applications Technology Methodology		
Module outcomes: On completion of this module the student should be able to: <ul style="list-style-type: none"> • demonstrate comprehensive and systematic knowledge of appropriate policy documents of Computer Applications Technology in the FET phase; • demonstrate profound practical skills in the planning, presentation and assessment of both theoretical and practical CAT lessons; • demonstrate the ability to facilitate teaching and learning OBE Computer Applications Technology in the FET phase; and • demonstrate and evaluate the ethical use of different learning material for CAT. 		
Method of delivery: Full-time		
Methods of assessment: Continuous assessment 50 % 1x3hour written examination 50 %		

Module code: CTED521	Semester 2	NQF-level: 6 pending 7
Title: Civil Technology Methodology		
Module outcomes: On completion of this module the student should be able to: <ul style="list-style-type: none"> • demonstrate knowledge and understanding of the safety aspects applicable in the Civil technology class room, workshop and on site visits during practical sessions; • select and apply appropriate teaching and learning practices for the Civil technology classroom in a FET environment; and • complete a Civil technology educational project by selecting and using appropriate sources of information and communication. 		
Method of delivery: Full-time		
Methods of assessment: Continuous assessment 50 % 1x3hour written examination 50 %		

Module code: COMF411	Semester 1	NQF-level: 6 pending 7
Title: Computers in Education		
Module outcomes: On completion of this module the student should be able to: <ul style="list-style-type: none"> • demonstrate sound knowledge of e-learning and the policy on e-Education; • demonstrate knowledge and skills of ICT integration in schools; • demonstrate problem-solving abilities to plan, design and present computer-integrated lessons; and • critically evaluate ethical and moral aspects regarding the use of ICT in education. 		
Method of delivery: Full-time		
Methods of assessment: Continuous assessment 50 % 1x2hour written examination 50 %		

Module code: ECOD511	Semester 1	NQF-level: 6 pending 7
Title: Economics Methodology		
Module outcomes: On completion of this module the student should be able to: <ul style="list-style-type: none"> • illustrate and apply comprehensive and systematic knowledge of the National Curriculum Statement and other related educational policy documents for grades 10-12 and display an informed and critical understanding of the principles and theories with regard to classroom management, creative teaching and active learning in the Economics classroom in the context of postgraduate education; • execute critical analyses, syntheses and evaluations of quantitative and qualitative information with regard to classroom administration, classroom organisation and record-keeping; • effectively present academically professional information with regard to assessment of Economics teaching, as well as plan and prepare Economics lessons using his/her IT-skills and communicate coherently and creditably as an individual or as part of a group; and • use the knowledge and skills mastered in this module effectively to present the subject Economics to grade 10-12 learners using the Outcomes-based Educational approach and implement norms and values prescribed by the Education Department. 		
Method of delivery: Full-time		
Methods of assessment: Continuous assessment 50 % 1x3hour written examination 50 %		

Module code: EDCC511	Semester 1	NQF-level: 6/7
Title: Education Theory		
Module outcomes: On completion of this module the student should be able to demonstrate: <ul style="list-style-type: none"> • an informed understanding, as well as an integrated knowledge of a range of education theories, ideas and concepts that mark the current social science and educational landscape • a theoretically rigorous and conceptually integrated level of competence to apply some of the major education theories, ideas and concepts within their future educational practices as professional educators working in various contexts (schools, clinics, colleges, universities, parastatals, NGOs, development organisations and the government) • an ability to apply theoretical understandings to the conduct of basic research in education and to extend their theoretical insights based on the results of empirical inquiry. 		
Method of delivery: Full-time		
Prerequisite: thorough reading knowledge of academic English, as well as a thorough knowledge of academic writing through the medium of English. Methods of assessment and evaluation: <ul style="list-style-type: none"> • continuous assessment: 60 % (including online multiple choice tests, individual in-class, written assignments, pair-work in-class, written assignments, as well as individual essay-type written assignments) • A take home evaluation opportunity and/or one written examination opportunity of two hours duration (consisting of four essay-type questions of which any three must be answered): 40 % 		

Module code: EDCC512	Semester 1	NQF-level: 6 pending 7
Title: Assessment		
Module outcomes: On completion of this module the student should be able to: <ul style="list-style-type: none"> • demonstrate an understanding of outcomes-based assessment theoretical underpinning; • demonstrate understanding and application of integrated assessment; • demonstrate understanding of inclusively mainstream curriculum and the ordinary classroom environment; • demonstrate an ability to plan for teaching, learning and assessment within an OBE approach; • demonstrate the ability to conduct outcomes-based assessment; • demonstrate an understanding and application of recording, recordkeeping and reporting within an OBE approach; and • demonstrate understanding and application of quality assurance of assessment. 		
Method of delivery: Full-time		
Methods of assessment: Continuous assessment 50 % Take home examination 50 %		

Module code: EDCC513	Semester 1	NQF-level: 6 pending 7
Title: Professional Studies		
Module outcomes: On completion of this module the student should be able to: <ul style="list-style-type: none"> • demonstrate fundamental knowledge regarding the theoretical underpinnings and principles of an outcomes-based curriculum; • identify and explain the components of an outcomes-based curriculum cycle; • interpret the outcomes-based National Curriculum Statement and other related policies; • design a learning programme, work schedule and lesson plan using OBE principles; • demonstrate fundamental knowledge and skills in the selection, planning and implementation of direct and indirect teaching strategies and related instructional skills and teaching methods; • develop his/her own strategic teaching-learning approach; • develop and manage professional portfolios; and • apply appropriate knowledge, skills and attitudes in teaching practice. 		
Method of delivery: Full-time		
Methods of assessment: Continuous assessment 50 % 1x2 hour written examination 50 %		

Module code: EDCC521	Semester 2	NQF-level: 6 pending 7
Title: Educational Psychology		
Module outcomes: On completion of this module the student should be able to: <ul style="list-style-type: none"> • demonstrate fundamental knowledge of the theoretical underpinnings of educational and community psychology as well as the ecosystemic perspective; • act as an agent of change by integrating the theoretical underpinnings of educational and community psychology as well as the ecosystemic perspective in their education practice; • demonstrate well-rounded (fundamental and in-depth) knowledge of health promotion in diverse educational settings; • demonstrate fundamental knowledge of Inclusive Education and integrate this knowledge to create environments that value all learners; • understand the learner as a developing person from the ecosystemic perspective; and • critically reflect on interpersonal dynamics in educational settings 		
Method of delivery: Full-time		
Methods of assessment: Continuous assessment 50 % 1x3 hour written examination 50 %		

Module code: EDCC522	Semester 2	NQF-level: 6 pending 7
Title: Education Law, Systems and Management		
Module outcomes: On completion of this module the student should be able to:		
<ul style="list-style-type: none"> • contribute to quality education in a diverse community; • have a deep knowledge and understanding of the nature and aims of the South African education system; • function within this education system to the advantage of the South African community and to contribute to the solution of challenges; • have the ability to integrate education management theory and practice to develop professional classroom management skills in a diverse and changing national and international context; • demonstrate knowledge and understanding of education law principles, and the ability to interpret and apply legislation and policy correctly in order to become responsible, independent and a contributing member of the professional education community; and • have the ability to assess external influences on the education system and the classroom in order to develop critical, creative and reflective problem-solving skills within an educational and societal context by assessing external influences on the education system and the classroom. 		
Method of delivery: Full-time		
Methods of assessment:		
Continuous assessment 50 %		
1x3 hour written examination 50 %		

Module code: EDCC523	Semester 2	NQF-level: 6 pending 7
Title: Professional Studies		
Module outcomes: On completion of this module the student should be able to:		
<ul style="list-style-type: none"> • apply theoretical knowledge, practical skills and the required attitudes in teaching practice; • demonstrate knowledge of and insight into ethical aspects of the teaching profession and the SACE Code of Conduct; • demonstrate knowledge and understanding of the complexity of classroom discipline; and • identify, make, integrate and evaluate media in the teaching-learning situation. 		
Method of delivery: Full-time		
Methods of assessment:		
Continuous assessment for participation mark 50 %		
Theoretical examination 50 %		
* Work related training: Students must meet with all the requirements to pass EDCC523.		

Module code: EGDD511	Semester 1	NQF-level: 6 pending 7
Title: Engineering Graphics and Design Methodology		
Module outcomes: On completion of this module the student should be able to:		
<ul style="list-style-type: none"> • have sound knowledge regarding the outcomes of Engineering Graphics and Design according to the NQF; • possess the ability to apply the three planning phases of OBE in the class situation; • have sound knowledge to present the Turbo CAD Drawing programme as a presentation method in Engineering Graphics and Design; and • apply acquired Turbo CAD skills in his/her knowledge of Engineering Graphics and Design in the beginning phases for lessons and selected preparation for classroom activities. 		
Method of delivery: Full-time		
Methods of assessment:		
Continuous assessment 50 %		
1x3 hour written examination 50 %		

Module code: EGDD521	Semester 2	NQF-level: 6 pending 7
Title: Engineering Graphics and Design Methodology		
Module outcomes: On completion of this module the student should be able to:		
<ul style="list-style-type: none"> • have sound knowledge of the Solid Works Computer Aided Drawing programme for use in classroom practice in Engineering Graphics and Design as a school subject; • create parts, assemblies and sketches using Solid Works; • use the skills acquired in Solid Works by didactically presenting Solid Works in Engineering Graphics and Design; • prepare lessons and assess selected classroom activities; and • compare a CAD programme with a parametric CAD programme. 		
Method of delivery: Full-time		
Methods of assessment: Continuous assessment 50 % 1x3 hour written examination 50 %		

Module code: ENGD511	Semester 1	NQF-level: 6 pending 7
Title: English Methodology		
<ul style="list-style-type: none"> • demonstrate well-rounded knowledge of SLA learning and teaching theories as well as Methodological approaches • apply policy document (outcome of the generic module EDCC512) in the different phases at school level for teaching English and to interpret learning outcomes for the outcomes of each phase; • demonstrate systematic and comprehensive skills in the planning and execution of English lessons, integration with other learning areas and interpretation of the policy documents ; • demonstrate sophisticated competence as educator and in the selection of appropriate learning material and teaching strategies for all phases; and • demonstrate refined and cultivated values regarding the English language teaching profession, and showing responsibility towards learners and the community. 		
Method of delivery: Full-time		
Methods of assessment: Continuous assessment 50 % 1x3 hour written examination 50 %		

Module code: ENGD521	Semester 2	NQF-level: 6 pending 7
Title: English Methodology		
Module outcomes: On completion of this module the student should be able to:		
<ul style="list-style-type: none"> • demonstrate comprehensive knowledge of principles regarding the planning of lessons for teaching of English First Additional Language for Senior and FET Phases; • demonstrate well-rounded knowledge of SLA learning and teaching theories as well as Methodological approaches • apply policy document (outcome of the generic module EDCC512) in the different phases at school level for teaching English and to interpret learning outcomes for the outcomes of each phase; • demonstrate systematic and comprehensive skills in the planning and execution of English lessons, integration with other learning areas and interpretation of the policy documents ; • demonstrate sophisticated competence as educator and in the selection of appropriate learning material and teaching strategies for all phases; and • demonstrate refined and cultivated values regarding the English language teaching profession, and showing responsibility towards learners and the community. 		
Method of delivery: Full-time		
Methods of assessment: Continuous assessment 50 % 1x3 hour written examination 50 %		

Module code: ETED521	Semester 2	NQF-level: 6 pending 7
Title: Electrical Technology methodology		
Module outcomes: On completion of this module the student should be able to: <ul style="list-style-type: none"> • demonstrate knowledge and understanding of the safety aspects applicable in the Electrical technology class room, workshop and on site visits during practical sessions; • select and apply appropriate teaching and learning practices for the Electrical technology classroom in a FET environment; and • complete a Electrical technology educational project by selecting and using appropriate sources of information and communication. 		
Method of delivery: Full-time		
Methods of assessment: Continuous assessment 50 % 1x3hour written examination 50 %		

Module code: GEOD511	Semester 1	NQF-level: 6 pending 7
Title: Geography Methodology		
Module outcomes: On completion of this module the student should be able to: <ul style="list-style-type: none"> • have thorough and systematic knowledge to apply integrated, specific skills to design and effectively implement Geography learning experiences; • integrate theory and practical components with regard to curriculum development and act as a curriculum planner; • distinguish between the different teaching and learning approaches, styles, strategies, methods and techniques and to evaluate which of these are specifically the most effective learning content in Geography, and subsequently implementing these in a creative, logical and systematic manner; • demonstrate a thorough and systematic knowledge in applying integrated critical skills to ensure that correct summative and formative continuous assessment methods, techniques, testing and examining of Geography knowledge are correctly implemented; and • analyse and implement the effective management and organisation of a Geography classroom, as well as the management and evaluation of the Geography department and personnel. 		
Method of delivery: Full-time		
Methods of assessment: Continuous assessment 50 % 1x3 hour written examination 50 %		

Module code: HISD511	Semester 1	NQF-level: 6 pending 7
Title: History Methodology		
Module outcomes: On completion of this module the student should be able to: <ul style="list-style-type: none"> • demonstrate an extended and systematic knowledge of the methodology of History in context of the National Curriculum Statement; • demonstrate extended skills in the analysis and synthesis of sources, the planning, design and implementation of various assessment strategies, the design of tests, examination papers and memoranda, as well as year planning (learning programmes and working schedules); • demonstrate competence in analysing and synthesising sources and the ability to plan practically, to design and implement various assessment strategies, to set tests, examination papers and memoranda as well as to conduct year planning (learner programmes and working schedules); and • demonstrate values of an ethically professional nature with regard to the interpretation of historical facts, which should always be true and contextual, in accordance with the Manifesto on Values, Education and Democracy. 		
Method of delivery: Full-time		
Methods of assessment: Continuous assessment 50 % 1x3 hour written examination 50 %		

Module code: INTD511	Semester 1	NQF-level: 6 pending 7
Title: Information Technology Methodology		
Module outcomes: On completion of this module the student should be able to:		
<ul style="list-style-type: none"> • demonstrate comprehensive knowledge of departmental policy documents on Information Technology in the FET phase, the curriculum and work schedules in applicable learning contexts, a variety of assessment techniques, methods and instruments applicable to Information Technology, as well as learning material for Information Technology and the organisation and administration of a computer centre; • demonstrate profound skills in analysing, interpreting and applying departmental policy documents to Information Technology in the FET phase, the planning, presentation and evaluation of both theoretical and practical lessons and the planning, implementation and evaluation of the principles of assessment in IT; • demonstrate the ability to implement and apply learning contexts and work schedules to enhance effective learning in Information Technology and to develop applicable learning activities to measure learners' attainment of specific learning objectives; and • demonstrate the ability to evaluate and debate the profile of the ideal Information Technology facilitator. 		
Method of delivery: Full-time		
Methods of assessment:		
Continuous assessment 50 %		
1x3 hour written examination 50 %		

Module code: LAAD511	Semester 1	NQF-level: 6 pending 7
Title: Learning Area Arts and Culture Methodology		
Module outcomes: On completion of this module the student should be able to:		
<ul style="list-style-type: none"> • demonstrate a comprehensive and systematic knowledge base of teaching African Arts, didactic principles such as planning lessons, work schedules and a learning programme in the learning area Arts and Culture, teaching methods in the arts and assessment in the arts should be able to debate and motivate his/her preferences; • independently evaluate the value of play in the learning area Arts and Culture and apply dance, drama, music and visual arts games in the learning area Arts and Culture; • demonstrate an ability to identify, analyse and deal with complex and/or real world problems in applying practical teaching skills during micro-lessons and practical teaching in the learning area Arts and Culture; and • evaluate all opinions from one's own well-established worldview while teaching dance, drama, music and visual arts in the learning area Arts and Culture during micro-lessons and in practical teaching and be aware of social and ethical implications of applying knowledge in a certain context 		
Method of delivery: Full-time		
Methods of assessment:		
Continuous assessment 50 %		
1x3 hour written examination 50 %		

Module code: LAAD521	Semester 2	NQF-level: 6 pending 7
Title: Learning Area Arts and Culture Methodology		
Module outcomes: On completion of this module the student should be able to:		
<ul style="list-style-type: none"> • demonstrate a comprehensive and systematic knowledge base and a coherent and critical understanding of integrated arts education, multicultural arts education and inclusive arts education; • critically analyse, synthesize and independently evaluate different models for integrating the Arts in the learning area Arts and Culture in the Senior Phase; • demonstrate an ability to identify, analyse and deal with complex and/or real world problems in applying genres, which are inherently integrated, such as theatre and musical storytelling; and • evaluate all opinions from one's own well-established worldview while teaching inclusive arts education in the learning area Arts and Culture during micro-lessons and in practical teaching and be aware of social and ethical implications of applying knowledge in a certain context. 		
Method of delivery: Full-time		
Methods of assessment:		
Continuous assessment 50 %		
1x3 hour written examination 50 %		

Module code: LABD521	Semester 2	NQF-level: 6 pending 7
Title: Learning Area Economic and Management Sciences Methodology		
Module outcomes: On completion of this module the student should be able to:		
<ul style="list-style-type: none"> • demonstrate in-depth knowledge and understanding of the National Curriculum Statement applicable to the learning area Economic and Management Science in the Senior Phase with regards to key terms, rules, concepts, principles and theories in this regard; • identify themes, plan activities supporting the coherent understanding of concepts, ideas, theories, principles and rules; • use known and abstract information by using graphs and theory driven arguments, and effectively use IT skills to collect, organise, critically analyse and to interpret; demonstrate problem-solving abilities to plan and present lessons for specific application to EMS; • effectively communicate EMS didactical aspects ethically, coherently and reliably to learners in the classroom situation by using individual or group methods; and • to plan, prepare and present a lesson according to the learning outcomes and assessment standards included in the National Curriculum statement for the senior phase. 		
Method of delivery: Full-time		
Methods of assessment:		
Continuous assessment 50 %		
1x3 hour written examination 50 %		

Module code: LAND521	Semester 2	NQF-level: 6 pending 7
Title: Learning Area Natural Sciences Methodology		
Module outcomes: On completion of this module the student should be able to:		
<ul style="list-style-type: none"> • demonstrate a comprehensive and systematic knowledge of the learning area Natural Science in the context of OBE concerning the following: facilitation in the Intermediate Phase, didactic principles of Natural Science education and the learning area Natural Sciences laboratory; • identify and solve problems within the themes mentioned above, and plan activities which support a comprehensive understanding of ideas, theories, principles and rules within these themes; • act in a problem-solving manner, in the planning and presentation of lessons and practical sessions within the context of the above-mentioned theoretical themes by using applicable technological resources; and • demonstrate an appreciation of the contribution made by indigenous knowledge systems to educational issues concerning the above-mentioned content as well as demonstrate an ethical professional attitude and behaviour towards the content of Natural Science. 		
Method of delivery: Full-time		
Methods of assessment:		
Continuous assessment 50 %		
1x2 hour written examination 50 %		

Module code: LASD521	Semester 2	NQF-level: 6 pending 7
Title: Learning Area Social Sciences Methodology		
Module outcomes: On completion of this module the student should be able to:		
<ul style="list-style-type: none"> • understand the place of Social Sciences within OBE, and explain the place of History and Geography respectively within the Social Sciences; • creatively apply a source-based approach in the learning area of Social Sciences; • demonstrate knowledge and skills to implement a learning experience in Geography and History as sub-disciplines of Social Sciences and prove that they are skilled to use different teaching techniques, including information and communications technology in Social Sciences; • demonstrate general teaching approaches in learning experiences of Social Sciences; • explain the role of environmental value education in the school curriculum and indicate how this can contribute towards the moral development of individual learners and the community as well as the implementation of this in learning experiences of Social Sciences; • creatively design suitable learning experiences, work sheets, assessment rubrics, tests/exams and memoranda regarding synoptic weather maps, topographic maps and aerial maps according to OBE and geographical didactical principles, as well as efficiently integrating other learning areas GEOD 511 and HISD 511; and • have the necessary knowledge and skills to construct and use graphs and diagrams in Social Sciences and integrate these in suitable themes in Social Sciences. 		
Method of delivery: Full-time		
Methods of assessment:		
Continuous assessment 50 %		
1x2 hour written examination 50 %		

Module code: LIFD511	Semester 1	NQF-level: 6 pending 7
Title: Life Sciences Methodology		
Module outcomes: On completion of this module the student should be able to: <ul style="list-style-type: none"> • design a learning programme (work schedule and lesson plans) and assessment instruments, apply laboratory techniques in Life Sciences and apply Environmental Education in Life Sciences; • identify and solve problems within the above themes as well as plan activities that support the comprehensive understanding of ideas, theories and principles and rules within the themes; • use problem-solving abilities regarding the planning and presentation of lessons and practical sessions within the context of the theoretical themes mentioned above by, amongst others, the use of suitable technological aids; and • display an appreciation for the contribution that indigenous knowledge systems play in pharmacology, bio-ethical issues in the above content and the ethical accountability towards the content of the Living Sciences. 		
Method of delivery: Full-time		
Methods of assessment: Continuous assessment 50 % 1x3 hour written examination 50 %		

Module code: LIFF521	Semester 2	NQF-level: 6 pending 7
Title: Life Skills		
Module outcomes: On completion of this module the student should be able to: <ul style="list-style-type: none"> • demonstrate fundamental knowledge of issues relating to diversity, HIV/Aids, values and environmental education; • demonstrate an understanding of appropriate skills, attitudes and values to contribute and maintain a healthy environment; and • integrate HIV/Aids, diversity, values and environmental education in the classroom. 		
Method of delivery: Full-time		
Methods of assessment: Continuous assessment 50 % 1x3 hour written examination 50 %		

Module code: LLOD511	Semester 1	NQF-level: 6 pending 7
Title: Life Orientation Methodology		
Module outcomes: On completion of this module the student should be able to: <ul style="list-style-type: none"> • demonstrate a comprehensive and systematic knowledge base of the terminology, rules, concepts, principles, theories, methods and strategies pertaining to the presentation of the four focus areas of Life Orientation in the FET phase; • demonstrate an ability to interpret, convert, evaluate and apply essential theories, text, methods and strategies pertaining to the presentation of Life Orientation in the FET phase; • demonstrate the ability to attained knowledge to solve unfamiliar, concrete and abstract problems pertaining to the planning and implementation of Life Orientation learning programmes for the FET Phase, using appropriate technological skills and giving evidence of theoretical underpinning; and • act ethically responsible and value-driven in all circumstances and forms of communication, written as well as orally, related to the planning and presentation of Life Orientation in the FET phase. 		
Method of delivery: Full-time		
Methods of assessment: Continuous assessment 50 % 1x3 hour written examination 50 %		

Module code: LLOD521	Semester 2	NQF-level: 6 pending 7
Title: Learning Area Life Orientation Methodology		
Module outcomes: On completion of this module the student should be able to:		
<ul style="list-style-type: none"> • apply the outcomes for the Senior phase in such a way that it will encourage learner-centered and activity-based learning activities and to identify the critical as well as the specific outcomes for the grades you are being trained for and motivate the rationale for them; • motivate self-knowledge and career knowledge in the Senior phase as the two major components of career planning, indicate the process of obtaining information on job opportunities and evaluate these aspects in learners by means of questionnaires and self-help instruments; • apply and practice health promotion and personal well-being in the Senior phase so as to promote learner-centered and associated activity in the classroom situation; • evaluate inclusive teaching on the basis of personality traits and personal development aspects; and • apply and practice physical development and physical education in the Senior phase so as to encourage learner-centered and associated activities in the classroom situation. 		
Method of delivery: Full-time		
Methods of assessment: Continuous assessment 50 % 1x3 hour written examination 50 %		

Module code: MATD511	Semester 1	NQF-level: 6 pending 7
Title: Mathematics Methodology		
Module outcomes: Upon completion of the module students must have to demonstrate comprehensive knowledge, insight and skills regarding the planning of powerful learning opportunities within the mathematics classroom, with specific reference to the following:		
<ul style="list-style-type: none"> • the learning and teaching of mathematics worldwide, and within the context of reform; • assessment of, and for, the learning of mathematics; • the effective use of technology in the teaching and learning of school mathematics; and • the value of mathematics in real life by presenting mathematics lessons and completing assignments. 		
Method of delivery: Full-time		
Methods of assessment: Continuous assessment 50 % 1x3 hour written examination 50 %		

Module code: MATD521	Semester 2	NQF-level: 6 pending 7
Title: Mathematics Methodology		
Module outcomes: On completion of this module the student should be able to:		
<ul style="list-style-type: none"> • apply conceptual and pedagogical knowledge, insight and skills regarding <ul style="list-style-type: none"> ◦ the content and structure of the Mathematics Curriculum applicable to the Senior Phase and FET band; ◦ the implementation of Mathematical Literacy as a compulsory subject in the FET band; ◦ the effective teaching of mathematics in multilingual classrooms; and ◦ the value of mathematics in real life. 		
Method of delivery: Full-time		
Methods of assessment: Continuous assessment 50 % 1x3 hour written examination 50 %		

Module code: MSVD511	Semester 1	NQF-level: 6 pending 7
Title: Music Methodology		
Module outcomes: On completion of this module the student should be able to:		
<ul style="list-style-type: none"> • demonstrate a comprehensive and systematic knowledge base of the didactic principles concerning the facilitation of the following learning outcomes in Music (Gr 10-12): music performance (individually and in ensembles); improvisation, arrangement and composition; music literacy's and critical reflection on African and global musical processes, practices and products; • independently evaluate and create different lesson plans, work schedules, learning programmes and evaluate and apply assessment practices in Music in the Further Education and Training Phase; • demonstrate an ability to identify, analyse and deal with complex and/or real world problems in applying practical teaching skills during micro-lessons and practical teaching in Music in the Further Education and Training Phase; and • evaluate all opinions from your own well-established worldview while teaching Music (Gr 10-12) during micro-lessons and in practical teaching and be aware of social and ethical implications of applying knowledge in a certain context. 		
Method of delivery: Full-time		
Methods of assessment: Continuous assessment 50 % 1x3 hour written examination 50 %		

Module code: MTED521	Semester 2	NQF-level: 6 pending 7
Title: Mechanical Technology methodology		
Module outcomes: On completion of this module the student should be able to:		
<ul style="list-style-type: none"> • demonstrate knowledge and understanding of the safety aspects applicable in the Mechanical technology class room, workshop and on site visits during practical sessions; • select and apply appropriate teaching and learning practices for the Mechanical technology classroom in a FET environment; and • complete a Mechanical technology educational project by selecting and using appropriate sources of information and communication. 		
Method of delivery: Full-time		
Methods of assessment: Continuous assessment 50 % 1x3hour written examination 50 %		

Module code: PHSD511	Semester 1	NQF-level: 6 pending 7
Title: Physical Sciences Methodology		
Module outcomes: On completion of this module the student should be able to:		
<ul style="list-style-type: none"> • demonstrate the knowledge and skills they have acquired with regard to <ul style="list-style-type: none"> ○ the integration of pedagogical content knowledge and physical sciences content knowledge; ○ progression of content knowledge and process skills of Physical Science from grade 7 to 12; ○ Nature of Science and its relationships to technology, society and the environment; ○ learning theories and teaching strategies as implemented in Physical Sciences; and ○ assessment models in Physical sciences, and laboratory management. 		
Method of delivery: Full-time		
Methods of assessment: Continuous assessment 50 % 1x3 hour written examination 50 %		

Module code: RSVD511	Semester 1	NQF-level: 6 pending 7
Title: Religion Studies Methodology		
Module outcomes: On completion of this module the student should be able to:		
<ul style="list-style-type: none"> critically analyse, synthesise and evaluate the National Curriculum Statements for Religion Studies; compile and develop a teacher and learner portfolio; assess the learner's portfolio in support of professional development for the student and learners studying Religion Studies; apply various research methods and techniques to do research on religion as social phenomenon; and present findings in written and verbal format with the effective use of technology. 		
Method of delivery: Full-time		
Methods of assessment:		
Continuous assessment 50 %		
1x2 hour written examination 50 %		

Module code: SEMD511	Semesetara 1	Tekanyo Ya NQF: 6 pending 7
Title: Setswana Methodology (Mother Tongue)		
Module outcomes: Kwa bkohutlong jwa mojulu o, tshwanets go:		
<ul style="list-style-type: none"> go supetsa mekgwa ya go ruta le go ithuta puo ya Seaforika jaaka leleme la ntlha mo phaposiboruetlong; go supetsa kitso e e lotaganeng e e rulaganeng ya diteori tsa go ruta thutapuo le thutadithangwa ka tiriso ya mekgwa ya OBE le PKB mo mephatong ya 4-6; 7-9; kgotsa 10-12; go supetsa bokgoni jwa go ruta thutapuo ka tiriso ya thutadithangwa tsa Setswana; go supetsa kitso e e lotaganeng ya ditokomane tsa Lefapha la Thuto bogolosegolo tse di maleba le dithuto tsa Puo; go supetsa go thaloganya tiro le tiriso ya maemo a tekanyetso mo phaposiboruetlong ya Dipuo; go puo, jwa go akanya le go neela mabaka; go rulaganya maitemogelo a thuto le go a diragatsa; 		
Mokgwa Wa Go Ruta: Full-time		
Mekgwa Ya Go Tlathhoba:		
Tlathhobo e e tswelelang 50 %		
Diura tsa tlathhobo e e kwadiwang 1x2 hour ke 50 %		

Module code: SEMD521	Semesetara 2	Tekanyo Ya NQF: 6 pending 7
Title: Setswana Methodology (Mother Tongue)		
Module outcomes: Kwa bkohutlong jwa mojulu o, tshwanets go:		
<ul style="list-style-type: none"> go tlhama diragatso tsa go ithuta go nonofisa bokgoni jwa puo mo dikgatong tse di farologaneng; go supetsa kitso e e lotaganeng e e rulaganeng le go bopa lenaanethuto le sejulu ya tiro ya thuto ya Setswana ya mephato e e farologaneng; go supetsa le go thalosa mekgwa e e farologaneng e e maleba ya tekanyetso ya thuto ya Puo; go tlhama le go tshola direkoto tsa tekanyetso; go go sekaseka le go ananela ditokomane tsa Lefapha la thuto tse di maleba le thuto ya Dipuo; go supetsa go thaloganya dikarolo tse supa tsa morutabana, bogolosegolo yo o rutang Dipuo. 		
Mokgwa Wa Go Ruta: Full-time		
Mekgwa Ya Go Tlathhoba:		
Tlathhobo e e tswelelang 50 %		
Diura tsa tlathhobo e e kwadiwang 1x2 hour ke 50 %		

Module code: SEND511	Semester 1	NQF-level: 6 pending 7
Title: Setswana Methodology (Non-Mother Tongue)		
Module outcomes: On completion of this module the student should be able to: <ul style="list-style-type: none"> • indicate knowledge of the learning area languages and also be aware of the aims and the content thereof; • know the approaches in teaching African Languages and have knowledge of the correct approach to be followed in teaching Setswana and provide proof of the subject knowledge of Setswana as elective module; • have knowledge in different methods in foreign language acquisition and know the different factors that influence them; • be acquainted with policy documents and manuals of the Department of Education and know how to use them; • acquire the ability to become a responsible teacher who has the ability to do thorough lesson planning and is able to present lessons accordingly; and • have introductory knowledge in the planning of learning programmes, work schedules and complete lesson plans and assessment of Setswana as 2nd Additional Language and have proven subject knowledge of Setswana. 		
Method of delivery: Full-time		
Methods of assessment: Continuous assessment 50 % 1x2 hour written examination 50 %		

Module code: SEND521	Semester 2	NQF-level: 6 pending 7
Title: Setswana Methodology (Non-Mother Tongue)		
Module outcomes: On completion of this module the student should be able to: <ul style="list-style-type: none"> • have knowledge in the teaching methods of reading, listening, writing and speaking in the OBE Setswana Classroom; • teach language, reading and literature and be able to set tests, examinations and compile memoranda; • show competence in preparing language and literature lessons and to present them in such a way that oral and reading skills also receive attention; • implement objective, trustworthy assessment of language, reading, oral and literature and also know how to remedy where needed; • show knowledge in administering a Setswana classroom and have knowledge of all the ways of recording that have to be done to compile learner profiles and assessment reports and know how to apply differentiation and integration; • know the requirements for teaching aids, language games and the possibilities of CAL; and • acquire information needed for planning educational excursions. 		
Method of delivery: Full-time		
Methods of assessment: Continuous assessment 50 % 1x2 hour written examination 50 %		

Module code: TECD521	Semester 2	NQF-level: 6 pending 7
Title: Learning Area Technology Methodology		
Module outcomes: On completion of this module the student should be able to: <ul style="list-style-type: none"> • demonstrate a fundamental knowledge of the NCS document with regard to the learning area Technology; apply interpretation and designing skills in the development and planning of learning programmes, work schedules and lesson planning; • show a comprehensive understanding of different teaching-learning and assessment strategies that are appropriate for the learning area Technology; • demonstrate an understanding of the nature of organising and managing a practical technology class room and workshop, including safety aspects relevant to practical technology tasks; and • apply relevant knowledge and skills in the practical teaching of the learning area Technology. 		
Method of delivery: Full-time		
Methods of assessment: Continuous assessment 50 % 1x3 hour written examination 50 %		

Module code: TGN0511	Semester 1	NQF-level: 6 pending 7
Title: Technology		
Module outcomes: On completion of this module the student should be able to: <ul style="list-style-type: none"> • demonstrate problem-solving skills, critical and creative thinking during the application of the design process to technological problems and needs in real life; • demonstrate a fundamental understanding of, and the ability to apply appropriate technological knowledge, skills and values; • demonstrate a critical understanding and appreciation of the interrelationship of technology, society, economy and the environment; and • demonstrate the application of the attained knowledge and skills and fulfil the role of technology learning mediator. 		
Method of delivery: Full-time		
Methods of assessment: Continuous assessment 50 % 1x2 hour written examination 50 %		

Module code: TGN0521	Semester 1	NQF-level: 6 pending 7
Title: Technology		
Module outcomes: On completion of this module the student should be able to: <ul style="list-style-type: none"> • demonstrate a basic knowledge of the learning area Technology in the South African School system; • demonstrate a comprehensive knowledge of all the three outcomes and assessment standards in the Senior Phase, including structures, systems and control and processing; • demonstrate the principles of outcomes-based assessment in the learning area Technology for the Senior Phase; and • apply the problem-solving and creative approach to the learning area Technology and the unique methodology thereof in the Senior Phase. 		
Method of delivery: Full-time		
Methods of assessment: Continuous assessment 50 % 1x2 hour written examination 50 %		

Module code: TRVD511	Semester 1	NQF-level: 6 pending 7
Title: Tourism Methodology		
Module outcomes: On completion of this module the student should be able to: <ul style="list-style-type: none"> • Demonstrate knowledge of the application of the NCS and the CAPS document; • demonstrate knowledge of the content of the learning outcomes of Tourism and the topics of the CAPS and analyse and interpret them; • demonstrate skills in the planning of lessons and other activities for Tourism; • apply suitable teaching methods in Tourism; • design and apply all aspects of assessment in Tourism; and • demonstrate skill in the selection and development of learning material; gather and interpret information on tourism. 		
Method of delivery: Full-time		
Methods of assessment: Continuous assessment 50 % 1x3 hour written examination 50 %		

Module code: TTED511	Semester 1	NQF-level: 6 pending 7
Title: FET Technology Methodology		
Module outcomes: On completion of this module the student should be able to: <ul style="list-style-type: none"> • describe and explain the rationale of Technology teaching in schools as well as debating the realities confronting South African schools regarding the instruction of Technology in the FET phase; • demonstrate a well-grounded knowledge of the NQF of FET Technology in this phase; and • demonstrate the ability to do suitable planning in the FET Technology phase in accordance with the unique methodology of Technology with knowledge of the Technological process. 		
Method of delivery: Full-time		
Methods of assessment: Continuous assessment 50 % 1x3 hour written examination 50 %		

Module code: VWVD511	Semester 1	NQF-level: 6 pending 7
-----------------------------	-------------------	-------------------------------

Title: Consumer Sciences Methodology

Module outcomes: On completion of this module the student should be able to:

- demonstrate a fundamental knowledge of the NCS document with regard to Consumer Studies and Hospitality Studies;
- apply interpretation and designing skills in the development and planning of learning programmes, work schedules and lesson planning;
- show a comprehensive understanding of different teaching-learning and assessment strategies that are appropriate for consumer studies and hospitality studies;
- demonstrate an understanding of the nature of organising and managing a practical class-room including safety aspects relevant to practical tasks; and
- apply relevant knowledge and skills in the practical teaching of Consumer Studies and Hospitality Studies.

Method of delivery: Full-time

Methods of assessment:

Continuous assessment 50 %

1x3 hour written examination 50 %