

## Meet this versatile **Vice-Rector**

*Prof Mariëtte Lowes, who has been Vice-Rector: Academic, Teaching and Learning on the Potchefstroom Campus since 2006, is equally at home under the bonnet of a car as she is behind a desk. Read on p8 and 9 about her love of motorsport and why she is a person of unexpected contradictions.*

*Read this!*

**3** Koreans honour Mafikeng Rector

**5** Supplemental instruction in the spotlight

**6** Prof Alta sets the pace in SA

MESSAGE FROM THE  
VICE-CHANCELLOR



At this time of the year we are busy finalising the planning processes and budget for next year, and I am glad to be able to say that our institution is still very well positioned to deal with the demands of higher education.

During the annual institutional planning session (which was also attended by the vice-rectors of the respective campuses) the Institutional Management took a good look at the future positioning of the institution, with a strong focus on:

- further expansion of the campuses' niche areas and development trajectories, including the student enrolment plan for the period 2011-2013;
- internationalisation, and more specifically a framework to offer academics an opportunity to position themselves better internationally and to set up the necessary support structures;
- The prospect of expanding our distance programmes and aiming it at the growing adult education market;
- the optimisation of operational

processes, notably information technology and management information; and

- new challenges such as the pursuit of sustainable development – of which you can read more in this edition of Eish!

In the meantime, we all stay focused to:

- finish the academic year successfully (you can also read in this Eish! how students can be helped by means of supplemental instruction);
- complete the various infrastructure projects in time; and
- finalise the quality improvement plan resulting from our own gap register as well as the recommendation from the HEQC report.

I trust that most of you will be able to use the short recess in September to “recharge your batteries” before the last shift.

Regards,

*James Cloff*

*Dear colleagues*

Spring is in the air and the third quarter is drawing to a close.

## *Eish! we have a few more firsts*

Just when you start to believe that there really is nothing new under the sun, you get a surprise.

Because of the initiative and expertise of the NWU staff, there's always something new to brag about. In this edition of Eish! you can read about various novelties – and firsts – for the University.

On p5 we boast about the NWU's new regional office for supplemental instruction (SI), which is also the only SI regional office in the world.

On p6 you can read about Prof Alta Schutte from the Faculty of Health Sciences on the Potchefstroom Campus. She is the first NWU scientist to be announced as one of the winners of the South African Women in Science Awards.

The NWU could well become one of the first universities in the world to meet the same legal requirements for sustainability

that businesses have to comply with. Read more about this potential 'first' for the institution on p7.

As always, there is news from the Mafikeng, Potchefstroom en Vaal Triangle Campus on p10-12, and on p15 we remind everyone of Heritage Day, or Braai Day as many like to call it. How are you going to celebrate your heritage?

The ex gratia leave was lovely, but it also wreaked havoc on our schedules. The winners of the competition in our previous edition will thus only be announced simultaneously with the winners of the competition on p14.

This year will soon be entering the home stretch – good luck to all, shoulder to the wheel and Eish! will be waiting for you at the finishing line!

*Nelia & Marelize*



# These **NUMBERS** place us among the best

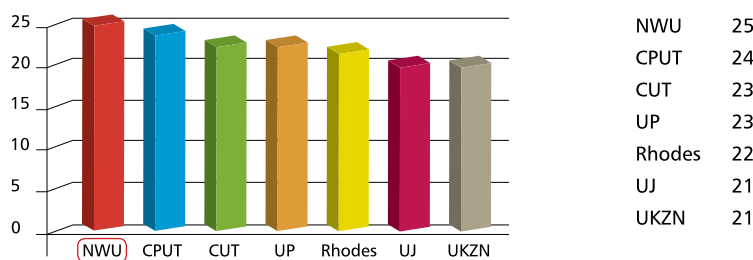
The NWU is unquestionably one of the leading higher education institutions in South Africa. In this and subsequent issues of Eish! we will be sharing some of these statistics with our readers.

According to the 2008 figures of the Department of Higher Education and Training (published in 2010), the NWU rated as follows against the other 22 higher education institutions in South Africa:

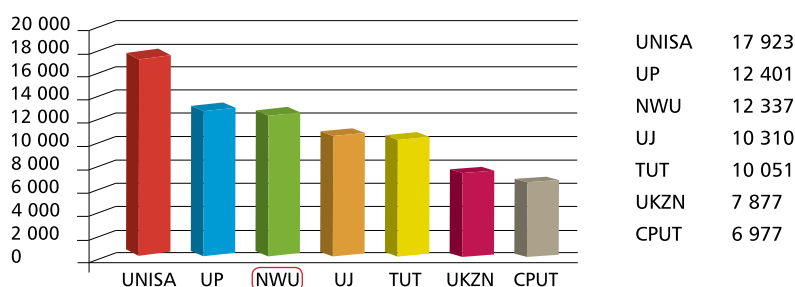
- In 2008, the NWU was the fourth largest university in South Africa based on the total headcount, namely 47 008. In terms of distance students, the NWU was the second largest in SA.

	Total headcount	Contact	Distance
UNISA	261 927	633	261 294
UP	53 106	39 167	13 939
TUT	51 613	49 195	2 418
NWU	47 008	25 740	21 268
UJ	44 456	44 456	0
UKZN	37 188	30 341	6 847
CPUT	29 367	29 307	60

- In terms of graduation rates (the number of degrees as a percentage of the total heads), the NWU rated first in the sector, with 25%.



- In terms of the total number of degrees and diplomas awarded (12 337), the NWU rated third in the sector.



**Acronyms:** CPUT – Cape Peninsula University of Technology; CUT – Central University of Technology; NWU – North-West University; Rhodes – Rhodes University; TUT – Tshwane University of Technology; UJ – University of Johannesburg; UNISA – University of South Africa; UP – University of Pretoria; UKZN – University of KwaZulu-Natal.

These are some of the statistics included in the publication: *Pocket Statistics 2010/11*. It is available from Corporate Affairs and Relations, Institutional Office (C1 building, room 138) or at your campus marketing and communication office. Enquiries: [nelia.engelbrecht@nwu.ac.za](mailto:nelia.engelbrecht@nwu.ac.za).



Prof Dan Kgwadi, Rector of the Mafikeng Campus receives his honorary doctorate degree from the Vice-Chancellor of the Hanseo University, Prof Ham Kee-Sun.

## Korean University honours prof Dan Kgwadi

Professor Dan Kgwadi, the Rector of the Mafikeng Campus received an honorary doctorate in Management from the Hanseo University in South Korea.

The Honorary Doctorate was awarded to Prof Dan for his contribution in management and the enhancement of students' lives at the Mafikeng Campus.

He has helped many students to access funding and offered his time to help students in their studies. Prof Dan started this year on a high note by committing himself to help lecture first year Physics students throughout the year.

"I receive this honor and dedicate it to the management, staff and students of the North-West University as well as my family. In response to this honour, I dedicate myself to sponsor one more student with an underprivileged background to further his or her studies," said Prof Dan when he received the honorary degree.

Prof Kgwadi also thanked Dr Ham Kee-Sun, Vice-Chancellor of the Hanseo University, Prof Kim Seung-Jae, Dean of Student Affairs and the Hanseo University community for the kind gesture and their generosity. "We value our relationship with the Hanseo University," he added.

# Don't stress about the stress assessment project



There is no need to stress about the stress and burnout project currently being undertaken by NWU Employee Wellness.

Managers at the NWU were informed about the stress and burnout project at workshops during August and September 2010.

As the project will be undertaken per faculty or specialist area, staff members in these units will soon be requested to attend briefing sessions where the different steps will be explained to them. These sessions will also include information on how to complete the confidential questionnaire that they will receive.

"The results of these questionnaires will indicate each participant's position

with regard to factors such as over-commitment, distraction, burnout and work engagement and this will be indicated on a graph," says Dr Shelley-Ann Williams, Manager: Employee Wellness.

Staff will be briefed on how to read this graph during the briefing sessions, as each participant will receive his or her own feedback report.

After receiving feedback, there will be two interventions for staff members. The first will comprise six coping efficiency workshops presented during the last part of 2010.

These workshops are open to all staff members, especially those who are stressed. At these workshops staff members will be assisted to manage their stress, using more active coping strategies.

The second intervention will make provision for staff members who have been identified as high-risk cases (with regard to burnout) to be sent for a maximum of three consultations with professionals such as psychologists and coaches.

These staff members will have the option to go to the professional person's consulting rooms off campus, or else visit the consultation rooms that will be made available on the campuses and at the Institutional Office.

## No whistleblower should be bullied

It is a criminal offence to bully or discriminate against staff members who report irregularities. However, it is also illegal to make false and malicious allegations against another person.

That is according to Ms Madelein van der Merwe, Director: Internal Audit, in light of recent investigations during which these dilemmas cropped up.

"The NWU encourages staff to report irregularities and, in terms of the Protected Disclosures Act, the University has an obligation to protect whistleblowers against victimisation," she says.

During a recent investigation by Internal Audit, it was found that people – specifically managers – tend to make their own assumptions about the possible identity of the whistleblowers and then, either directly or indirectly, intimidate, threaten, or slander these persons.

### DISCIPLINARY ACTION

"This type of behaviour is unacceptable and could result in disciplinary action," warns Madelein.

Conversely, disciplinary steps could also be taken against a staff member who makes false and malicious allegations or who deliberately tries to embarrass or harass another person.

However, staff members need not fear action against them when they report cases in good faith, even if the allegations are eventually proved to be unfounded.

If whistleblowers genuinely believe that the information is true and if they are not doing it for personal gain or remuneration, it is seen as a protected disclosure, which means that they won't be prosecuted.

### *The procedure...*

The procedure for reporting irregularities is set out in the NWU's policy on the reporting of maladministration and irregularities and the protection of disclosure. This policy is available on the NWU website under Management and Governance.

Staff members can complete the relevant form, an appendix to the policy, and put it in one of the reporting boxes located at the administration buildings of the respective campuses and at the Institutional Office's C1 Building.

Dr Ngoato Takalo, Executive Director: Teaching-Learning and Vice-Principal (left) with Dr Glen Jacobs, Executive Director of the International Centre for SI (centre) and Dr Theuns Eloff, Vice-Chancellor, at the signing of the cooperation agreement and opening of the NWU's SI regional office.

## The world's only regional office for Supplemental Instruction is here

The NWU recently became the first university in the world whose request was granted to set up a regional office for Supplemental Instruction (SI) in a country that already has a national SI office.

At the same time, Ms Mariaan Klopper from Academic Development and Support became only the third person in South Africa – and one of just 14 people worldwide – to be accredited as SI trainer.

SI is a mainstream academic support system for students in high risk modules. The students receive support from trained SI leaders (students who have already completed the module successfully) in small, informal groups.

"The Nelson Mandela Metropolitan University in Port Elizabeth is already one of six national SI offices in the world. However, in view of the fact that the NWU's SI programme is already well established and that the International SI Centre was very excited about our work, they granted our request to set up a second office in South Africa," says Mariaan.

The SI regional office at the NWU was officially opened on 30 July 2010. At that occasion, Dr Theuns Eloff, NWU Vice-Chancellor, and Dr Glen Jacobs, Executive Director of the International Centre for SI at the University of Missouri in Kansas City, USA, signed a cooperation agreement at the Institutional Office of the NWU.

"Although the NWU's office is a regional office, it has the same rights and functions as the national office in Port Elizabeth," says Mariaan.

### HOW THE NWU WILL BENEFIT

The establishment of the SI office will benefit the NWU in several ways.

Firstly, it contributes towards advancing the University's vision of being a pre-eminent university. Secondly, it also makes a contribution to internationalisation, which is one of the NWU's objectives. A third advantage is that it gives the NWU access to the network of expertise of the approximately 1 500 institutions in the 29 countries that offer SI.

Mariaan's accreditation as trainer also means that she can offer SI training at the NWU and other institutions. This will save the University money and at the same time earn the institution some third stream income.

### SI WORKS BEST

"Most higher education institutions in South Africa already offer some form of academic support to students, most of which are in any case based on the principles of SI," says Mariaan.

The NWU has found that SI works best: the results of students who participate in SI programmes typically increase by between 9% and 15%.



Ms Mariaan Klopper from Academic Development and Support is one of only three people in South Africa accredited to provide SI training. She is the institutional manager of SI at the NWU.

"This system has been around since 1973, so it is already well established. Its success has been confirmed and endorsed by years of global research," says Mariaan.

SI already existed at one of the merger partners, the former Potchefstroom University for Christian Higher Education, and was extended to the Mafikeng Campus shortly after the NWU came into being in 2004.



Mr Derek Hanekom, Deputy Minister of the Department of Science and Technology presents the award to Prof Alta Schutte.

was presented to her by the Department of Science and Technology at a prestigious event in Johannesburg.

Prof Alta is a National Research Foundation-rated researcher (Y1 rating) and her work focuses on hypertension and cardiovascular diseases in the black communities of South Africa. She has published 62 research articles and co-authored four books.

She has also supervised 10 postgraduate students, has been a reviewer for 16 journals (local and international) as well as a reviewer for the National Research Foundation.

"I am grateful for the recognition at this level of the important work that is done by our research entity, HART," she says.

The Women in Science Competition is part of the annual celebration of Women's Month in August. The goal is to give due recognition to the work of female scientists.

## She's setting the pace in SA

Prof Alta Schutte, Director of the research focus area Hypertension in Africa Research Team (HART) in the Faculty of Health Sciences on the Potchefstroom Campus, is the first NWU scientist to be announced as one of the

winners of the South African Women in Science Awards.

On 13 August 2010, Prof Alta was announced winner in the category: Young Female Scientist in the Life Sciences. This award



A unique plant protection material for tunnels is the NWU's first patent that was registered in all ARIPO countries in Africa at once. Here is Prof Leon van Rensburg of the Potchefstroom Campus in a greenhouse tunnel covered with this material.

## NWU's patents are registered worldwide

They may not have discovered fire or invented the wheel, but NWU researchers can boast a total of 36 South African patents registered during the last couple of years – a glider, unique plant protection material and revolutionary spark plug technology, to name but a few.

The University currently has 36 patents registered in South Africa and 47 other countries. Eight of these are registered in the USA. That is really something, seeing as it is

quite difficult to register patents in the USA. Patents and income from product sales generate around R2,6 million a year for the NWU in royalties, licence income and product sales.

The latest patent, which has been registered in China, is an amino-acid application that was developed by Prof Leon van Rensburg from the School of Environmental Sciences in the Faculty of Natural Sciences on the Potchefstroom Campus. This technique

makes it possible to keep abalone from dehydrating so that a better quality product can reach the consumer. This may have great implications for industry.

Another of Prof Leon's patents is photo-selective film that is used for covering tunnels and that stimulates crop growth. This patent was registered in all 16 African Regional Industrial Property Organisation (ARIPO) countries at once, which is another historic first for the NWU.

### NOW JUST ONE ADDRESS FOR PATENT MATTERS

Mr Frans Kruger from Institutional Legal Services managed the NWU's patent register for the last 15 years. That responsibility has now been transferred to Mr Johann Coetzee, manager in the Institutional Technology Transfer and Innovation Support Office.

One of the reasons for this decision was that the new law which regulates the management of intellectual property at universities (and other institutions) makes many administrative demands. Another factor is that the extent of the NWU's patent register is increasing all the time. Legal Services will, however, remain responsible for the University's trademark and copyright issues.

# NWU examines sustainability

The NWU could become one of the first universities in the world to comply with the same legal requirements for sustainability that businesses need to comply with.

That was one of the reasons why the first of a series of workshops on sustainability was presented on 27 July 2010.

Eish! asked Ms Bibi Bouwman, Director: Community Engagement, about the NWU's approach with regard to sustainability.

## Why is it important that NWU staff be aware of the requirements for sustainability that businesses are subject to?

Businesses are required by law to use a certain percentage of their profits for community engagement. They often lack the manpower to manage these funds and projects, and this is where the University could play an important role.

We could combine their money with our expertise to create **sustainable** community projects. Students could also become involved, render a service and gain valuable practical experience.

Whenever the NWU teams up with businesses to become involved with community projects, it is important to understand exactly how they are supposed to spend their money in order to meet the legal requirements.

## How would a greater awareness of sustainability benefit the NWU?

If we comply with the requirements of sustainability, we will, in this respect, be one of the first universities to give this matter its rightful place.

It is also a way of being proactive. Businesses may in future make donations and bursaries for universities dependent upon the institutions' carbon footprint, social responsibility and the extent to which they meet the requirements of sustainability.



Ms Bibi Bouwman, Director: Community Engagement, with the presenter of the workshop on sustainability, Ms Reana Rossouw from Next Generation Consultants.

## What is sustainability all about?

It has to do with an institution's economic, environmental and social impact. A business that focuses exclusively on financial output and fails to consider and manage the human dynamics and impact on the environment is not sustainable.

Sustainability is about a shared vision: a group of people who plan, work and learn together so that an institution will in the long term still be in a position to address the matters of the day in a functional and effective way.

Sustainable development can also be defined as development that meets the needs of the present without compromising the ability of future generations to meet their own needs.

## What is the role of reporting?

It is very important. The King III Report appeals to institutions to report on sustainability in an integrated manner. Since June 2010, this is also a requirement for companies who wish to list on the Johannesburg Stock Exchange.

If we decide to go down that road, the NWU will have to report in an integrated manner on our economic (core business), environmental and social sustainability

(community engagement). This could either mean a separate sustainability report or we could consider revising the structure or angle of the existing NWU Annual Report.

## What is the next step?

The NWU will have to decide to formulate a sustainability policy, which will require broad consultation and a task team. A proposal to change the Institutional Plan accordingly has already been made.

# The essence of elegant

Prof Mariëtte Lowes, Vice-Rector: Academic, Teaching and Learning on the Potchefstroom Campus is a person of unexpected contradictions.

This stylish woman is for example equally at home under the bonnet of a car as she is behind a desk. She is passionate about teaching and learning activities and

their influence on young people's lives and futures. But treetop swinging and motorsport also make her heart beat faster.

Prof Mariëtte was appointed as Vice-Rector in 2006, and her job description has recently been changed to allow for a more focused approach to teaching-learning.

"I would like to improve students' experience in class and also ensure that the support that lecturers receive makes their task easier," she says.

## THE HOME STRETCH

Although we're already in the second half of 2010, Prof Mariëtte still has many plans for the rest of the year.

She wants to attend to matters such as the coordination of several initiatives

on Campus concerning the use of technology in the teaching environment, establishing the outcomes of a variety of tests to determine the readiness of first-year students, and the alignment of the various processes, from recruitment of students to registration.

She wishes all students great success with their studies for the rest of 2010. "I hope that students will realise that we are trying to establish a more academic mindset on Campus and that in spite of the vibrant student life there will also be a sense of urgency to attend to academic obligations successfully."

She also wants the graduates delivered by the NWU to be well-rounded, balanced, career-ready adults. "I believe that our endeavours at academic level to add value through the module in academic literacy (AGLE) and the new Understanding the World modules are indeed contributing towards this."

## CHALLENGES

Her work as Vice-Rector brings with it many challenges.

"Because of my hectic schedule, a lot of concentration is sometimes needed just to maintain a strategic focus. It is also a definite challenge to make the teaching-learning environment as challenging and stimulating as possible for students and staff alike by creating structure, but also by introducing renewal with regard to approach and tools."

Factors that help her deal with these challenges include the high quality people who work and study here and the general quality of programmes, research and services.

Another definite plus is the fact that she can work in a beautiful environment such as the particularly well tended Campus. In her private life, she





# versatility...

also likes to create an aesthetically pleasing environment and to spend time in nature. No wonder: Prof Mariëtte grew up on a farm in the Machadodorp district.

## FARM GIRL

"I grew up on a sheep farm near Machadodorp," she says. "Some of my fondest memories have to do with being part of an extended family – the feeling of security, spending time with loved ones, and the winters that we had to spend with our livestock in the Lowveld. Also fishing in the trout streams of the escarpment."

Apart from the fact that Prof Mariëtte used to be a farm girl, there are also some other interesting things about her that people are not necessarily aware of.

"Not many people would suspect it, but I am really quite mechanically-minded. I used to service my own car (a small Fiat), back in the days when engines were still relatively uncomplicated. I am good with my hands - I do needlework and I can knit quite well.

"On the other hand, most people already know that I cannot swim or ride a bicycle. I am also not much of a cook."

Prof Mariëtte may not be a cordon bleu cook, but she does not lack skills and courage. That much is clear from her challenging position and her love for adventure sports. While it may be true that tall trees catch much wind, she certainly does not shy away from anything...

## *Her favourites*

**What is your favourite dish?** Green beans and all curried food.

**What is your favourite book or film?** The works of Ayn Rand (eg Atlas Shrugged), works of Paulo Coelho (eg The Alchemist) and The Little Prince by Antoine de Saint-Exupery. And films by Ingmar Bergman and The Bird Cage, and Chocolat...

**What makes you happy or makes you laugh?** Visually pleasing things and the people closest to me, such as my grandchild, make me happy. I enjoy situations that are subtly funny, in other words where there is some sort of twist in the tale.

**What characteristics do you appreciate most in people?** Honesty, reliability, optimism and the ability not to take themselves too seriously and to keep an eye on the bigger picture.

**Which famous people would you like to have a conversation with?** Mr Mandela of course – I'd like to experience his "magic". Maybe Meryl Streep – I

would like to talk to her about her ability to stay young and entertain us in such an awesome way.

**What is the best advice that you ever received, and from whom?** That you should stay on your feet during crisis times, through the pain and suffering, refrain from making any drastic changes and stick to your routine as closely as possible, because things will always get better eventually. This advice is from a friend, Paul Bester.

**What is your favourite vacation spot?** The Drakensberg or somewhere else in nature – the Seychelles aren't bad either...

**What do you do for fun?** I spend time with friends and family, listen to music, read, walk the dog, solve Sudokus, watch films, make clothes and do some gardening. I also do treetop swinging to add a little excitement. In addition, I enjoy motorsport, Grand Prix and the TV programme, Top Gear.

**Who are your closest family members?** My daughter, Elle-Sarah and my son-in-law, Aldo, and granddaughter, Zara Maria.





*Prof Dan Kgwadi, Mafikeng Campus Rector and Prof Harry Williams, President of Delaware State University signed a Memorandum of Understanding between the two institutions.*

## Campus partners with Delaware State University

The Mafikeng Campus recently collaborated with the Delaware State University (DSU) of the United States of America. Delegates from DSU visited the Mafikeng Campus and the institutions signed a memorandum of understanding on Wednesday 28 July 2010.

This partnership will benefit both institutions in the field of research and supervision of postgraduates. Both will also have exchange programmes for postgraduate students on master's and doctoral levels.

The relationship between the NWU and DSU started in 2007 in Zurich, Switzerland when Prof Masood Khalique from the School of

Mathematical and Physical Sciences on the Mafikeng Campus and Dr Anjan Biswas from the Department of Mathematical Sciences from DSU met at a mathematics conference. They shared common ground and found it in their interest to work together to build a relationship between their institutions.

Prof Dan Kgwadi, Mafikeng Campus Rector is very excited about the partnership with DSU. "This will enhance teaching and learning at both our institutions," he said.

Prof Harry Williams, President of DSU expressed their commitment and emphasised the importance of the partnership between the two institutions.

## Soccer Institute star joins PSL team

Andile Khumalo from the Mafikeng Campus Soccer Institute made history by becoming the first player to be recruited by a Premier Soccer League (PSL) team directly from the Institute. The 20-year old midfielder who is in his final year of a Sports Science Diploma has signed a three year contract with the Durban-based Amazulu FC.

He joined the North-West University and subsequently the Soccer Institute in 2008 after having played for Newcastle United in KwaZulu-Natal. Andile, who has also trained with the national under-20 team, made his debut for the team during the 2010 edition of the Telkom Charity Cup tournament.

According to the Soccer Institute Manager, Mr Nsibanyoni Khulu, the young star is a clever player and he believes he will do well. "This milestone achievement is an opportunity that will open doors for other Soccer Institute players," he said.



*Andile Khumalo, up and coming soccer star.*

## American nursing professors visit Mafikeng

Two nursing professors from the John Hopkins University School of Nursing (JHUSON) in the United States of America recently visited the Department of Nursing Science (DNS) in the Faculty of Agriculture, Science and Technology.

The specific aim of Prof Phyllis Sharp and Prof Jacquelyn Campbell's visit was to impart

and exchange information with their South African counterparts, and the North-West University in particular. During their stay, both professors actively participated in academically-related events that were hosted by the DNS.

Prof Phyllis did a presentation on systematic literature review and Prof Jacquelyn presented

a one day seminar titled: Forensic Science Development in the Republic of South Africa: Education, Practice and Research.

The DNS and the JHUSON has a collaborative agreement and their partnership focuses on staff development, student exchange and joint supervision of post-graduate students' research projects.

## Music makes his world go round



Prof Karendra Devroop is an accomplished saxophonist.

Prof Karendra Devroop, the new Director of the School of Music and the Conservatory on the Potchefstroom Campus is a music maven that dances to his own tune.

Prof Karendra completed his PhD at the University of North Texas, and after teaching

for 10 years in Virginia and Pennsylvania he joined the Elizabethtown College as the Director of Music Education.

He is also a jazz saxophonist and jazz pianist with several recordings to his credit, and his debut CD "Reminiscing" was released 10 months ago.

Prof Karendra started the South African Music Outreach Project in 2008 as a way of giving back to his students. "I felt I was in a position to affect music education for disadvantaged students in South Africa," he says. He hopes to bring this project to the NWU to assist students who cannot afford instruments.

He would also like to link the project with the existing community project, Musikhane, to provide more support to local schools and communities by means of workshops and concerts.

Prof Karendra is excited about this new challenge and looks forward to grow and develop the School of Music even further. "I have no doubt that the School of Music will be the leading institution to study music nationally within a relative short period of time."



Dr Martin van Eldik with one of the heat pump units.

## Engineering lecturer is causing a sensation

A senior lecturer at the North-West University's Potchefstroom Campus is causing a sensation countrywide after sharing his research on and knowledge of energy-saving heat pumps on Carte Blanche.

According to Dr Martin van Eldik of the School of Mechanical Engineering the heat pump saves approximately two thirds of energy usually needed to heat 3kW of water. The heat pump works exactly like a refrigerator or an air conditioner. The difference is that the focus is on heating the water and not on cooling the air.

Yet another advantage is the fact that it is not - as is the case with solar panels - dependent on the sun to provide power. This can help Eskom in lowering the national usage and therefore ensure that they can provide sufficient electricity. "Currently heat pumps are being installed in large quantities in mines with the assistance of Eskom," says Dr Martin.

According to Dr Martin, final-year and postgraduate students' next generation research on heat pumps is focused on creating a commercial product which can bring about more savings than the present heat pump technology.

"We are now in the process of developing a first for South Africa. It is a CO2 heat pump test table that can be used to do detailed research on a variety of aspects. The second area we are focusing on is the integration of a solar panel with a heat pump to determine the electricity saving potential of the combined system."

## Measuring of air pollution now done near Potchefstroom

A collaboration agreement between the North-West University and the University of Helsinki in Finland has led to the establishment of a uniquely equipped monitoring station near Potchefstroom that measures air pollution and climate changes.

At the station, meteorological data, radiation intensities, polluting substances such as sulphur dioxide, nitrogen oxides, ozone, carbon dioxide, volatile organic compounds and atmospheric particles (aerosols) are measured.

Dr Pieter van Zyl of the atmospheric chemical research group on the Potchefstroom Campus says the aerosol

measuring is combined with absorption measuring to obtain a better indication of the effect of aerosols on the radiation balance, an extremely important factor in studies on climate change.

The measuring station is situated outside Potchefstroom on a degree of latitude where climate changes will probably be noticed quickest, since it is situated more or less in the transition area between a wet and dry region (seen from a world perspective).

The area is also influenced by polluted air from Gauteng as well as by clean areas that enable comparisons between polluted and relatively clean sectors.

# He is the king of fishing

The Vaal Triangle Campus is known for its natural beauty and unique location in a proclaimed nature reserve, but not many people are aware of the fishing opportunities.

The undisputed king of fishing is Oom Jan Louw who has been working as general artisan on the Campus for the last 21 years.

The biggest fish he's ever pulled out of the Vaal was a barbel that weighed a whopping 23 kg. More recently he caught a carp that tipped the scale at 19 kg.

He once caught 39 fish in one evening – and was rebuked by campus security because the fish “hung on the fence like washing”.

Today he does it purely for fun – and he has already persuaded several other young staff members to join in.

\*Oom Jan is a member of the Potchefstroom Modderdam Fishing Club and he is a regular participant in competitions. Remember: if you would like to follow in Oom Jan's footsteps, you will need a fishing licence.



*This fish tipped the scale at 19 kg.*



*The Director: Student Development, Mr Harm Stavast, encourages students to follow in the footsteps of former president, Mr Nelson Mandela.*

In honour of the first international celebration of Mandela Day, the Vaal Triangle Campus took hands with Karabo Fm (103.7mha) to reach out to the students of Phiritona Secondary School, a rural high school in Heilbron in the Free State.

The goal of this initiative was to motivate the grade 12 students – in the process of preparing for their final examinations – to reach their goals. Karabo Fm broadcast the event directly.

The Director: Student Development, Mr Harm Stavast encouraged the students to live each day to the full, and to continue the legacy of transformation and compassion of former president, Mr Nelson Mandela.

The clinician, Ms Elizabeth Mapeete shared information pertaining to teenage pregnancy, HIV/Aids and other health issues. A drama group of the Campus entertained the students with a play, and the day was brought to a closure with a series of soccer matches.

Mandela Day is an annual celebration of Nelson Mandela's life. The aim is to unite people and consequently impact positively on the world.

The United Nations proclaimed 18 July an international commemorative day. On this day young and old are challenged to walk in Nelson Mandela's shoes and to make a difference in their communities.

## Watuni Canoe Club tames Berg River

Members of the NWU Vaal Watuni Canoe Club boast top performances after participating in the popular Berg River Marathon.

This well-known race was tackled – in trying conditions such as extreme cold and unfavourable weather conditions - over a period of four days and a total distance of 240 km.

It was in particular the Scheepers brothers who drew the most attention during their first Berg River Marathon. Rikus Scheepers was awarded the fourth position in the Junior Division with only 38 seconds the



difference between him and the members of the South African Junior Canoe Team. This team is currently representing South Africa in Europe. This promising youngster secured an overall 40th place in the marathon.

Henco Scheepers, Rikus' elder brother, positioned himself in the top 50 rankings within his division. Other members of the club that performed well include Jerome Boule, Clint Howes and Jan Leonard.

BELINDA BOSCH



MATSIE MOOKI



CYNTHIA KAMFFER



MARIANA STRYDOM



# Walking the **extra mile**

*The response from staff has been great and the second mile mailbox is bursting at the seams. We received so many nominations that we now have a waiting list. We publish as many nominations as possible in each issue, so please be patient. We again avail ourselves of this opportunity to give recognition to our colleagues who are always willing to go the extra mile in their work.*

**Ms Belinda Bosch**, secretary of the Department of Financial Administration in the Institutional Office covers the extra mile for her colleagues at her own initiative. "She is someone who takes ownership for her work," praises Ms Marelize de Lange, financial manager in the Residence and Catering Department on the Potchefstroom Campus.

According to Ms Kesolofetse Lefenya, lecturer in the School of Postgraduate Studies in the Faculty of Law on the Mafikeng Campus, **Ms Matsie Mooki**, lecturer in the School of Undergraduate Studies at the same faculty, never hesitates to lend a hand. "She focuses all her energy on helping people and goes out of her way to render a good service to students and colleagues," says Kesolofetse.

Another person who deserves a compliment is **Ms Cynthia Kamffer**, secretary of the Department of Academic Administration on the Potchefstroom Campus. Ms Fiona Joubert, a graduation ceremony officer in the Organisation and Distribution Centre, agrees that she always gives her all and that she is highly professional. Who would have thought that Cynthia is also a racing ace who used to participate in rallies!

Prof Herman van der Merwe, Dean of the Faculty of Economic Sciences and Information Technology on the Vaal Triangle Campus, would like to nominate two staff members. According to him, **Ms Mariana Strydom**, senior administrative officer in the HR Department in the Institutional Office, truly went the second mile. "During the ex gratia leave she helped me to finalise a number of appointments in our faculty. Mariana, thank you for your help!"

He also nominates **Mr Archie Mooi**, a practitioner in the HR Department on the Vaal

Triangle Campus. "Archie does not think twice about helping out and is always there when you need him, no matter what time of the day or night. He has often assisted me outside normal working hours."

**Ms Antoinette Vosloo**, senior accountant in the Management Accounting Services Section, is another true stalwart. "Antoinette always makes time for us. She is consistent and fair and does not distinguish between her staff," say all her colleagues. Some of the staff members got stuck in the lift a while back and Antoinette was there the whole time to support them and to help ensure their "release".

Ms Jenny Taljaard, secretary of the School of Music on the Potchefstroom Campus, nominates **Ms Anne-Marie Snyman**, administrative officer at the car park on the same campus. "Anne-Marie is always professional, helpful and friendly. She is a valuable acquisition to the University and always a pleasure to work with."

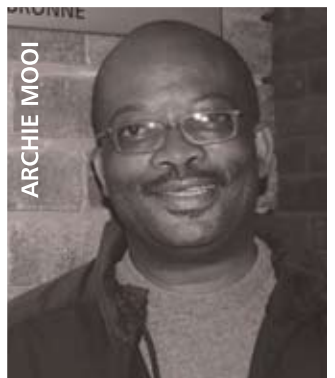
The hard work of **Ms Martie Esterhuizen**, library assistant on the Vaal Triangle Campus, does not go unnoticed. "Martie is extremely patient and always finds time to help wherever she can," says her colleague, Sally van Heerden.

If you would like to nominate a colleague who always goes the second mile, please send an e-mail to:

Marelize.Santana@nwu.ac.za

Remember to give your job title and the name of your department or school as well as the particulars of the person that you wish to nominate.

ARCHIE MOOI



ANTOINETTE VOSLOO



ANNE-MARIE SNYMAN



MARTIE ESTERHUIZEN



# No, it's **not** an enormous **swimming pool**

Staff speculating that the big hole next to the BCom building on the Potchefstroom Campus might be the beginnings of an enormous swimming pool have got hold of the wrong end of the stick.

The E5 building, consisting of offices and lecture rooms of different sizes, is still going to be built.

"The building project has not been cancelled, but the client – the Faculty of Economic Sciences – requested a number of changes to the plans, which resulted in the project being extended," says Ms Liesel van Wyk from Physical Infrastructure and Planning.

"We had to do comprehensive research into what size lecture room would be ideal – in other words what is big enough without compromising the quality of teaching," she says.

The earth-moving work has already been completed, but that has to do with the fact that the NWU works on the owner-builder principle.



*This peculiar notice is on the gate to the building site where the E5 building will soon rise.*

The University requested separate tenders for the earth-moving work, which slashed 10% off the cost. The University also bought the bricks separately, which translated into a further 10% saving.

Tenders for the construction work were sent out in the week of 10 August and Council will approve a tender at its meeting on 17 September. Construction will begin as soon as possible after that.

# WIN! WIN! WIN!

You can win a corporate **gift pack** – just find the answers to the following **10 questions!**

1.  2.  3.  4.  5. 

Identify the close-ups and provide the relevant page numbers on which they appear.

- 6: From what university did Prof Dan Kgwadi receive an honorary doctorate?
- 7: Which award did Prof Alta Schutte win?
- 8: What makes Prof Mariëtte Lowes' heart beat faster?
- 9: What was the theme of the workshop that Ms Bibi Bouwman, Director: Community Engagement organised?
- 10: On what date is Heritage Day celebrated?

**SEND YOUR ANSWERS TO:**

**Post:** Marelize Santana, Internal box 260

**E-mail:** [Marelize.Santana@nwu.ac.za](mailto:Marelize.Santana@nwu.ac.za) with **Eish!** in the subject field

**Remember: Include your staff number, title, name, surname, job title and the name of your division and campus.**

The first correct entry per business unit that we draw, will win a prize!

# Do you know what **Heritage Day** is really about?



**H**eritage Day, 24 September, is a public holiday on which South Africans across the spectrum are encouraged to celebrate their cultural heritage and the diversity of their beliefs and traditions, in the wider context of a nation that belongs to all its people.

Heritage Day is one of South Africa's newly created public holidays. In Kwazulu-Natal 24 September was known as Shaka Day, in commemoration of the Zulu King, Shaka.

The Public Holidays Bill presented to the Parliament at the time did not have this day included on the list of proposed public holidays. As a result of this exclusion, the Inkatha Freedom Party (IFP)

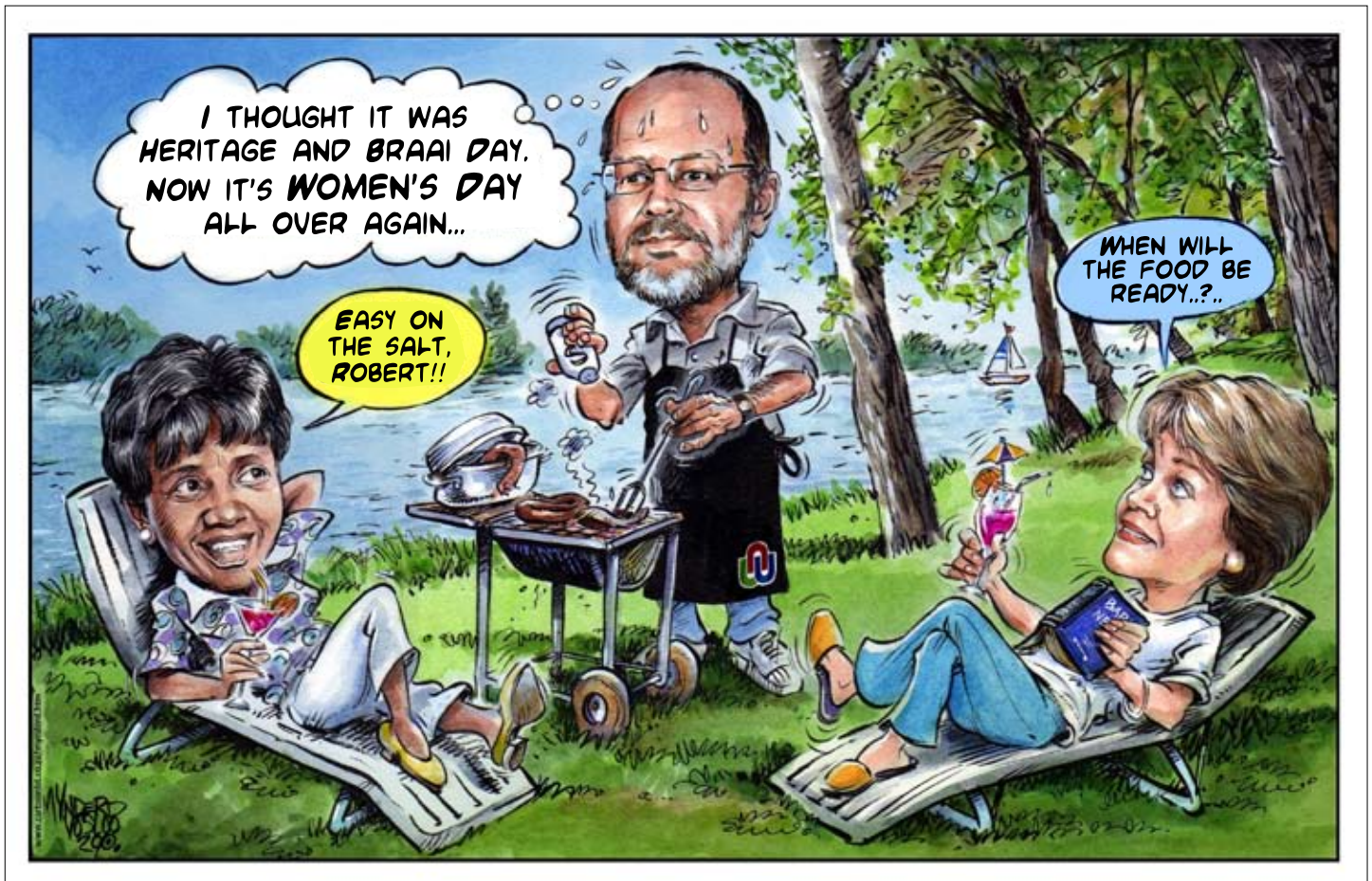
objected to the Bill. Parliament and the IFP reached a compromise and the day was given its present title.

Heritage Day is also known as Braai Day which is held under the Braai4Heritage banner and the patronage of Emeritus Archbishop Desmond Tutu. Braai Day aims to unite all South Africans by encouraging them to partake in a fun activity shared by all demographic groups.

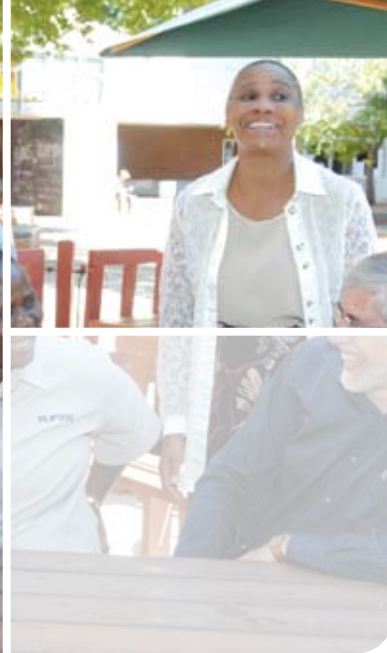
We should not only cherish our cultural heritage, but also conserve important sites in the world, especially in South-Africa. Therefore the United Nations Educational, Scientific and Cultural Organisation (Unesco) has declared eight world heritage sites

within South Africa:

- Greater St Lucia Wetlands Park in Kwazulu-Natal
- Robben Island in the Western Cape
- Cradle of Humankind in Gauteng and North West
- Ukhahlamba Drakensberg Park in Kwazulu-Natal
- Mapungubwe Cultural Landscape in Limpopo
- Cape Floral Kingdom in the Western and Eastern Cape
- Vredefort Dome in the Free State and North West
- Richtersveld Cultural and Botanical Landscape in the Northern Cape.



On Heritage Day, 24 September, the diverse peoples of South Africa celebrate their respective cultural heritage. It is also Braai Day – a day for socialising with other people. Here are the registrars of the NWU campuses, enjoying a barbeque on the Vaal Triangle Campus. They are, from left, Ms Dorothy August (Potchefstroom Campus), Mr Robert Kettles (Mafikeng Campus) and Ms Elbie Steyn (Vaal Triangle Campus).



Three people were at work on a construction site. All were doing the same job, but when each was asked what the job was, the answers varied.

**“Breaking rocks,”**

the first replied.

**“Earning my living,”**

the second said.

**“Helping to build a cathedral,”** said the third.

– Peter Schultz, CEO of Porsche, Germany



[www.nwu.ac.za](http://www.nwu.ac.za)