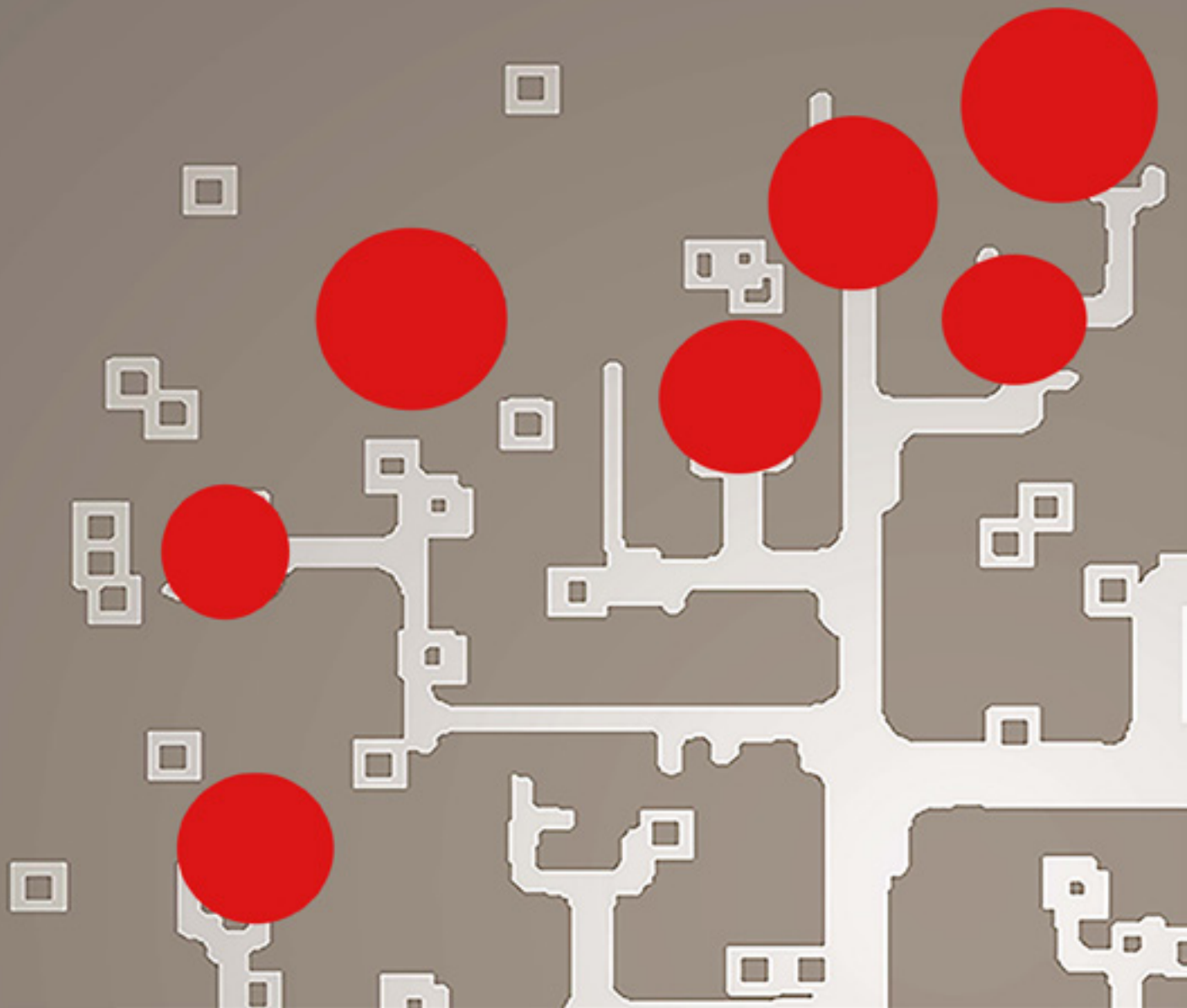


# wired@IT

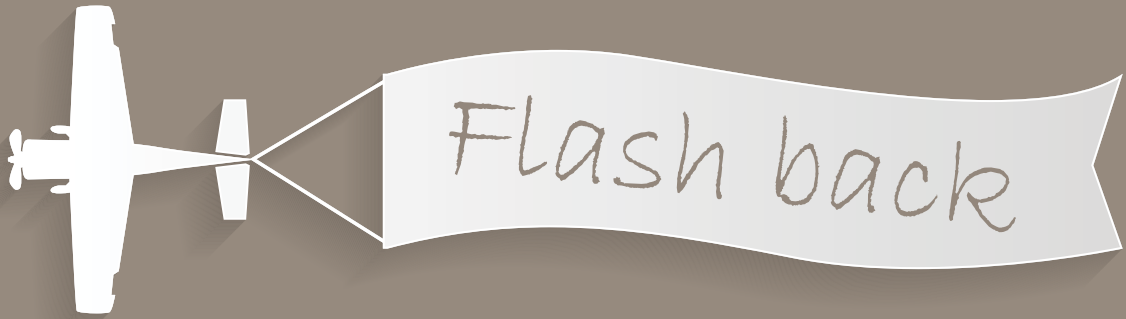


NORTH-WEST UNIVERSITY<sup>®</sup>  
YUNIBESITI YA BOKONE-BOPHIRIMA  
NOORDWES-UNIVERSITEIT

December 2016 Edition



# IT 2016 JOURNEY



# PREFACE

As the University is heading towards implementing the new strategy and structure, IT is preparing itself for the new era as well. We've been striving towards unity in IT for some time and although we have achieved a lot, it will actually become real now.

In general 2016 was a stable year for IT and we did not experience any major outages. In the latter part of the year we were confronted by some slow response on the Mafikeng campus, but it will be addressed by the upgrade of the connection between Potchefstroom, Mafikeng and Brits.

Cyber Security becomes more and more important and to balance the security profile of IT between the freedom of use and strict control, is sometimes a challenge. Humans are the weakest link and therefore we engaged into a cyber-security awareness campaign and went through an external cyber maturity assessment.

IT not only aligns its work towards the NWU-APP but also has to take external forces and the IT industry into consideration. Bimodal way of work, different options to provide solutions i.e. subscribe, buy, build, integrate, IoT, Big Data, etc. form part of our planning for the future.

We are well under way with our focus shift towards adding real value (customer intimacy and product leadership) to Teaching/Learning and Research activities of the NWU. An exciting 2017 lies ahead of us.

# INSIDE

December 2016 Edition

## RASPBERRY PI HACKATHON

Stimulates Open Innovation at NWU

## TEACHING WITH TECHNOLOGY

e-Fundi platform is much more than chat and upload of resources...

## DIGITAL LITERACY

Microsoft offers a range of self-paced online courses with optional certification.

## EXTENTION OF CARD FACILITIES

Card holders may benefit from the new initiative!

## LEOPARD PARK WIFI INSTALLATION

Wifi on off campus site holds a vast majority of possibilities

## WIFI @ SOCCER VARSITY CUP

Keeping the game results abreast...

## INTRANET UPGRADE

Upgrade promise a new look and noteworthy effectiveness

## EFUNDI UPGRADE

Stimulates Open Innovation at NWU

## ASSAUDIT LEADERSHIP INSTITUTE

'Cost Containment' themed meeting address the primary challenges universities face...

## SPRING GENERAL INSTITUTIONAL MEETING

A professional development programme for those who manage some aspect of information technology and resources in higher education...

## PERSONALIA

See the latest...

## SEASON'S GREETINGS

Best wishes to all our colleagues

## THINGS TO COME IN 2017

See what it has in store for you...





**Digital Literacy:**  
aims to further the  
essential fundamental  
technology skills



**Teaching with  
technology:**  
e-Fundi platform is  
much more than chat  
and upload...



**Card facility:**  
Varsity Vending (VV)  
cards as payment  
mechanism has now  
been extended for  
off-campus use.



**Teaching with  
technology:**  
aims to further the  
essential fundamental  
technology skills



**2017:**  
new possibilities in IT  
to come in the New  
Year...--



“ Raspberry  
Pi Hackathon  
Stimulates  
Open Innova-  
tion at NWU ”

# IT@NWU HOSTED THE FIRST RASPBERRY PI HACKATHON

IT@NWU hosted the first Raspberry Pi Hackathon on 27 and 28 October as part of International Open Access Week 2016.

Participants included undergraduate and postgraduate students, staff members from the NWU and elsewhere as well as an international visitor from Italy.

The participants enrolled in groups of 3 to 5 members. The challenge was to address one or more of the 17 Sustainable Development Goals set out by the United Nations by using the [\*Raspberry Pi 3 model B\*](#).

Groups were allowed to complete any prior work leading up to the hackathon and received the Raspberry Pi's on the 24th of October to begin working on their projects.





**GAWIE LE ROUX**  
**LUCASZ POLANSKI**  
**HENNIE ESTERHUIZEN**

Ultimately three groups took part in the hackathon, and all had different ideas that they wanted to achieve:

One of the groups who joined the Raspberry Hackathon consisted of Dr Hennie Esterhuizen en Gawie le Roux, both from the NWU IT Department, and Lukasz Polenski, a visiting IT specialist from Italy. The team set out to contribute to the United Nation's sustainable development goal number 4 - to promote quality education. In order to do

this, the team wanted to test the feasibility of using a Raspberry Pi in conjunction with open source software to establish a video conference service that can be used for geographically distributed lectures and two-way communication between lecturers and students.

Three Pi's were used and loaded with the UV4L (User space Video4Linux collection) image. One of the Pi's were utilised as a streaming server, while the other two remaining Pi's were configured as endpoints that joined a virtual meeting room using the WebRTC protocol.

WebRTC is a free, open project that provides browsers and mobile applications with Real-Time Communications (RTC) capabilities via simple API's. Some critics might observe that there are already a variety of free cloud-based video conference applications available from the likes of Skype, Google Hangouts and Facebook Messenger and that the team did not contribute anything new with their project. However





the team enjoyed the challenge to work with the hardware, operating system and the open source software to get the demonstration working successfully. And as an added bonus, the team members had the opportunity to learn from each other and build a strong South-African Italian partnership

BEYERS BARNARD A 4TH YEAR LAW STUDENT, FREDERICK KOEN BACK-END WEB DEVELOPER, CRYSTAL VAN NIEKERK A 4TH YEAR LAW STUDENT, DEWALD DU TOIT A 2ND YEAR BSC COMPUTER SCIENCE STUDENT, AND RICARDO VERTENTEN A FIRST YEAR AT CTU

Some critics might observe that there are already a variety of free cloud-based video conference applications available from the likes of Skype, Google Hangouts and Facebook Messenger and that the team did not contribute anything new with their project. However, the team enjoyed the challenge to work with the hardware, operating system and the open source software to get the demonstration working successfully. And as an added bonus, the team members had the opportunity to learn from each other and build a strong South-African Italian partnership.

**THE SECOND GROUP** consisted mostly of undergraduate NWU students, Beyers Barnard a 4th year

law student, Frederick Koen Back-end Web Developer, Crystal Van Niekerk a 4th year law student, Dewald Du Toit a 2nd year Bsc Computer Science student, and Ricardo Vertenten a first year at CTU. They were joined by Paul Bosman, a 4th year BEng electrical and electronic student at NWU. The group set out to create an automated greenhouse system with a reasonable level of Artificial Intelligence. The system communicates with a web page, designed to display all the relevant greenhouse data. This website would typically be the owner's control room for the agricultural environment inside and outside the greenhouse structure. The system makes decisions based on data received from all the sensors of



the greenhouse that monitor the atmospheric environment within the greenhouse. All variables are visualised graphically on the web page and all historical data is kept for future analysis. Furthermore, they proposed the

idea of this system being able to communicate with local information systems, such as shops and fresh produce markets. This level of information would then determine a product's demand and decide when and where a product

should be harvested, planted or halted. All of this in a more sustainable manner with little waste of resources. The prototype is currently being explored further for potential commercialisation.



DR. ANDRE GOODRICH, JUAN STEYN  
AND A POSTGRADUATE STUDENT  
GUSTAF TEMPELHOFF

**THE THIRD GROUPING** consisting of NWU staff members Dr. Andre Goodrich, Juan Steyn and a postgraduate student Gustaf Tempelhoff. The main aim of the project

was to create a user friendly system for communities to tell their own stories and history without having to be taught a whole new set of skills. Poverty stricken communities do not have access to the needed infrastructure or in many cases possess the necessary skill set to get their story out there. It builds on the Byderhand project on site specific literature and when completed will form part of a mobile

digital museum of the Miederpark area in Potchefstroom.

The project makes use of solar power and a capacitor as energy source to power up the Raspberry Pi. The setup utilises QR-codes, which enables the users to gain access to the multimodal texts on their mobile devices. This setup will enable anyone with a smartphone or mobile device to access

the museum at no cost to the user in terms of mobile data or access fees.

The two-day hackathon concluded on a high note with presentations from all participating teams. The panel of judges included Lappies Labuschagne, Ciellie Jansen Van Vuuren, and Martin Dreyer. The judging criteria were based on criteria that was previously employed by the Software Sustainability Institute during their Collaborations Workshop 2016 Hackday

## CW16 HACKDAY JUDGING CRITERIA

Each idea/pitch needs to be presented and registered by the evening of Tuesday 22 March 2016 to be officially part of the CW16 Hackday (HD). When registering your idea/pitch you will be asked about the team leader, details of what you plan and the category of your idea/pitch (e.g. Software and Credit, Data/Code Sharing,

Reproducible Research, Bring-Your-Own-Data (BYOD), Collaborative working etc.) Note the ideas need not be about writing software: they could be standards related, paper hackathons or some other research software related activity. Each idea will have a Team leader; the leader could be the idea owner, the pitch author/leader or someone who has decided to form a team around someone else's idea/open data. Each team can have a maxi-



The greenhouse project and virtual museum walked away as winners. Each team member of the winning teams received a of the Raspberry Pi 3 model B as a prize. We are looking forward to a similar event in 2017.

mum of six people who are not Institute Staff in it. We recommend a minimum of two people in a team; we have a limit on the number of teams - if there are more than 15, preference will be given to the bigger teams (not who came first). If a team becomes too big we may ask you to become two teams but working on the same pitch/idea.

Once your team is formed towards the latter part of the evening of the 22nd March, we strongly suggest you have a free and frank discussion with your team about the licensing around the code and data that is being used so it's upfront.

### READ MORE

► <https://www.software.ac.uk/cw16/hackday-judging-criteria>

“

e-Fundi platform  
is much more  
than chat and up-  
load of resources,  
there are so many  
options that can  
be used for  
teaching and  
learning

”

# MEET RUTH APPOLUS LECTURER FINANCIAL HEALTH MANAGEMENT UODL

▶ WHAT MOTIVATES YOU TO COME TO WORK EVERY DAY AND MAKE A DIFFERENCE?

My motivation to come to work every day comes from within. I am driven by the passion for what I do, the ability to do it and the growth and advancement that I believe will come with it.

▶ WHAT IS IMPORTANT TO YOU IN LIFE?

Beside my family, its life long learning

▶ WHY DO YOU WANT TO MAKE A DIFFERENCE?

Giving service to others is part of my motivation. As a nurse, I am aware that nurses are finding financial health management a very difficult subject, thus I want to help them look at financial health management with a different lens connecting to the bigger picture of improving the health of society

▶ JOB DESCRIPTION

The purpose of my position is to ensure that Open Distance Learning programmes are delivered on behalf of the Faculty using technology and facilities of the Unit for Open Distance Learning.





“Use of ICT as a teaching and learning platform is possible. It takes time to prepare, but at the end it is beneficial, cost effective and a lot of fun as well.”

## RUTH APPOLUS

### ► WHY DID YOU DECIDE TO USE THE TECHNOLOGY YOU USE?

After a transfer from the School of Nursing to the UODL, I was still expected to teach and manage academic programmes, to keep abreast with developments in academia. I realised that I will not have enough time to fulfil both responsibilities. I then decided to try the e-fundi platform, integrating it with the e-learning resources available at the unit.

### ► WHO WAS INVOLVED IN THIS PROJECT?

I started this project with ASS from Vaal campus because of their involvement in the development of Interactive SMART GUIDES. However, for maintaining quality, the manager for assignments at the unit and

the markers were also added as additional instructors.

### ► WHAT HAPPENED PREVIOUSLY FOR YOU TO MAKE THIS DECISION?

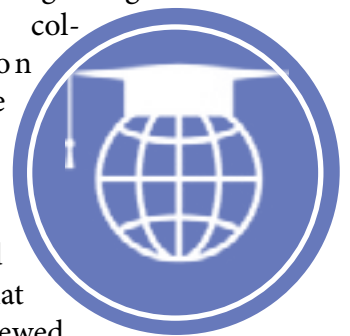
I arrived at NWU during the time when post basic nursing programmes started to broadcast interactive white board sessions. I was also one of the lecturers who took part in a study to pilot ICT and use of SMART GUIDES for nursing students. Even though I was not very technologically literate then, I decided that is the way I want to go.

### ► WHEN DID YOU FIRST TRY OUT YOUR UNDERTAKING?

I tried this in both 2014 and 2015. By then I only thought the e-fundi platform is used for the chat room and uploading resources, I did not understand that there are so many options that can be used for teaching and learning.

### ► HOW CAN THIS TECHNOLOGY BENEFIT THE STUDENTS?

This technology benefits students in the following ways: Instant grading and feedback, collaboration with the lecturer and other students, captured lectures that can be viewed several times, interactive SMART GUIDE, interactive whiteboard sessions. All these are available anytime and anywhere. Lastly it boosts their self-esteem and helps them succeed and be the best they can be. Attached are a few examples:



# STUDENT FEEDBACK



RUTH APPOLUS  
"MBATHA YOUR ASSIGNMENT  
HAS BEEN RETURNED"

SIYA MGOLOZELI  
"THANK YOU MAM SAW THEM..."

SIYA MGOLOZELI  
"MMMM MAM OVER THE MOON, MY MARKS HMMMMM, THANKS SO MUCH U  
ARE THE BEST..."

TEBOGO KHONKHOBÉ  
"OK THANKS MAM FOR THE CLARITY... I AM SATISFIED WITH THE MARKS"

RUTH APPOLUS  
"...THANK YOU EVERYBODY, I AM  
REALLY PROUD OF YOU..."

TEBOGO KHONKHOBÉ  
"OK THANKS MAM FOR THE CLARITY... I AM  
SATISFIED WITH THE MARKS"

RATO MAGOGODI  
"...I'M GETTING USE TO IT  
AND IT IS ALL THX  
TO YOU..."



“

Consider students profile  
and ability to  
use internet...

It first takes long  
to create content  
but when it  
is done it works  
perfectly...

”



LOOKING BACK... ON THE  
CLASSROOM TECHNOLOGY...

ACCOMPLISHMENT #1?

▶ All students who thought ICT is very difficult, realised that it can be done

LOOKING BACK... ON THE  
CLASSROOM TECHNOLOGY...

ACCOMPLISHMENT #2

▶ Only 20 students submitted paper based assignments

LOOKING BACK... ON THE  
CLASSROOM TECHNOLOGY...

ACCOMPLISHMENT #3

▶ 124 students wrote examination, 104 passed, 31 of them with distinction, 9 failed and 11 failed sub-minimum

## RESULTS

|          |        |     |     |     |     |
|----------|--------|-----|-----|-----|-----|
| 23557346 | 78.81% | 84% | 76% | 78% | 71% |
| 28611373 | 63.5%  | 78% | 56% | 56% | 66% |
| 28236092 | 59.93% | 56% | 52% | 74% | 49% |
| 28793587 | 74%    | 90% | 68% | 68% | 54% |
| 21191298 | 91.33% | 82% | 96% | 96% | -   |

FUTURE PLANS...

“To have the module completely electronic, without any hard copies.”

LASTLY...

“Use of ICT as a teaching and learning platform is possible. It takes time to prepare, but at the end it is beneficial, cost effective and a lot of fun as well.”

“

Microsoft  
offers a range of  
self-paced  
online courses  
with optional  
certification

”

# MICROSOFT DIGITAL LITERACY AIMS TO FUTURE TECHNOLOGY SKILLS...

## ► WHAT DOES MICROSOFT OFFER

Microsoft offers a range of self-paced online courses with optional certification, that can help you become more digital literate. There are 2 programs available to NWU staff and students: Digital Literacy and Imagine Academy (Microsoft Academy).

Microsoft's digital literacy program aims to further the essential fundamental technology skills, as well as expanding the basic understanding of computers. [Click](#) to listen to the podcast.





WHAT IS DIGITAL LITERACY? MR RIAAN VAN DER WALT, IT CONSULTANT, SAYS “TO ANSWER THIS QUESTION, ONE HAS TO FIRST DISTINGUISH BETWEEN THE DIFFERENT TYPES OF LITERACIES...”

**RIAAN VAN DER WALT**

EXPLAINING THE DIFFERENT TYPES OF LITERACIES



| Traditional literacy             | Information literacy   | Computer literacy   | Digital literacy  |
|----------------------------------|--|---|---|
| Reading<br>Writing<br>Arithmetic | Computer literacy<br>Information finding<br>Info Understanding<br>Info/Value creation<br>Collaboration with others through communication | PC operation<br>Email<br>Wordprocess or<br>Spread sheets<br>Presentation tool<br>Groupware<br>Database access | Innovation and creativity<br>Increase IT infrastructure and use<br>Promote smart tech adoption and increase productivity<br>Digitally literate consumers makes organizational sense<br>Promote economic and social inclusion<br>Supports empowerment and engagement |

## ► WHAT DOES MICROSOFT OFFER CONTINUOUS

Non-official certification is available upon completion of these courses. Generic ICT skills and concepts are taught and screen shots and simulations from Windows 8 and the 2010 Microsoft Office system are used to illustrate and provide hands-on examples.

By joining the online Imagine

Academy program, you will get a full curriculum of technology courses and learning tools that can help you achieve success.

Official industry-recognized certification options are available at an additional cost. Staff and students can access the Imagine Academy program by

- following the link
- logging in using their MS ac-

count login details, for instance 12345678@staff-365.msfed.nwu.ac.za for staff and 12345678@stud-365.msfed.nwu.ac.za for students

Microsoft's digital literacy successfully encapsulates all the types of literacies in their 3 level online curriculum.

The curriculum consists of the following:

### BASIC

This course teaches the value of computers in society and introduces you to using a mouse and the keyboard.

### STANDARD

Features five courses that cover Computer Basics; Using the Internet; Productivity programs (Word, Excel, PowerPoint; Security and Privacy; and Digital Lifestyles).

### ADVANCED

The Advanced curriculum features five courses that cover Building your First App; Creating an e-mail account; Creating a resume; Searching for content on the World Wide Web and Social Networking.

STEP  
01

WANT TO KNOW MORE?

For more information on the Microsoft Digital Literacy Courses visit:

<https://www.microsoft.com/en-us/DigitalLiteracy/faq.aspx>

For more information on Imagine Academy (Microsoft Academy) please contact the IT service desk on your campus.

“

Card Facilities  
have now been  
extended to  
off-campus  
purchases

”

# STUDENTS & VV-CARD HOLDERS MAY BENEFIT FROM THE NEW INITIATIVE!

The development process for the use of student and departmental Varsity Vending (VV) cards as payment mechanism has now been extended for off-campus use.

The first stores to be included is Beefboys, Fishmonger, Fine Things, Friendly Grocer (liquor store excluded), Campus Pharmacy and Salon Chalet.

The same procedures, rules and securities as for campus purchases are also applicable to off-campus purchases. Departmental VV cards can now also be used as alternative payment method instead of raising a KFS requisition for purchases.

Students and Departmental VV-Card users can now benefit from this new initiative!

Hear what some of our Pilot stores have to say...



“ Given the fact that a Business School is a unique component to any University it requires a unique setting... ”



# “THE WIFI INSTALLATION IS STATE OF THE ART... SO WE ARE CUTTING EDGE”

*Why was the decision taken to move to Leopard Park?*

Given the fact that a Business School is a unique component to any University it requires a unique setting. As most of the 18 public business schools are hosted off campus, the decision was taken in Jan 2016 to move the Business School of campus onto an environment befitting the ambiance of a Kalahari based Business School. The actual planning had started around April 2015 but was delayed due to various facility protocols that was needed to be observed.





“THE MOST AMAZING WAS THAT WHEN WE MOVED TO THE NEW FACILITY ON 1 AUGUST 2016, WIFI WAS OPERATIONAL ON 2 AUGUST 2016... WE HAD THEREFORE NOT LOST A SINGLE OPERATIONAL DAY”

**PROF JAN MEYER**

**BACKGROUND INFORMATION**



► WHO IS PROF JAN MEYER? "At this time I am the Manager for School of Business and Governance Mafikeng Site of Delivery."  
 ► FOR WHICH SUBJECT ARE YOU RESPONSIBLE? "It is more than subjects but I will be co-teaching the Industrial Project (new MBA 2) with Prof du Plessis (Tommy) and will be responsible for my own two teach out modules, Project Management and Operations Management (Both of these are from the old MBA). However I am also responsible for the functioning of the Business School as an entity complete with the responsibility of managing the students, money and potential income from sales of the Executive programs. My staff complement is 23 at this time. This is inclusive of the Business Centre."

► IF YOU MUST EVALUATE HOW DO THE STUDENTS EXPERIENCE WIFI IN THE VENUE? Well, it is not only students but also visiting staffs and campus management. All are very pleased as the speed and reliability is very good. From the students perspective the whole and integrated ICT experience

has been welcomed as something they would expect from a top rated business school.  
 ► HOW IS WIFI UTILISED IN CLASS SETUP? The Wifi is to facilitate the synchronous teaching between the sites of delivery. It also allows students to access the library and eFundi sites so it serves a multirole and a seamlessly

integrates the students learning experience.  
 ► WHEN DO THE STUDENTS USE WIFI – E.G. EFUNDI ASSESSMENTS? The students use it for all teaching and learning activities and also for research especially in the compilation of their mini-dissertations.

► HOW DO YOU THINK WIFI HAS BENEFIT YOU AS A LECTURER?

The WiFi has benefitted all the academic staff and the supporting administration of the Business School in its entirety.

► DO YOU THINK WIFI BENEFIT THE STUDENTS? This is an obvious no brainer and the answer is YES!

#### LOOKING BACK.....ON THE WIFI TECHNOLOGY....

a) IS THERE ANYTHING THAT YOU WOULD LIKE TO WORK DIFFERENTLY NEXT YEAR? (*An improvement maybe?*)

The installation is state of the art so we are cutting edge. Maintaining this will be the challenge of the

future.

b) ► HOW DOES A TYPICAL CLASS SETUP WORK? DO THE STUDENTS PARTICIPATE INTERACTIVE?

This depends on the class and the module on offer. It might be interactive but then it might also be in a synchronous or even asynchronous mode.

#### FUTURE PLANS...

► IS THERE ANY UNRESOLVED ISSUES WE MAY TAKE NOTICE OF HERE?

None, all issues were resolved and we are continuing or excellent relationship with MCIT & PIT (Institutional)...

► IS THERE ANYTHING ELSE YOU WOULD LIKE TO ADD TO THE ABOVE MENTIONED?

Not at this time other than that without the kind, speedy and detailed assistance of the Potchefstroom and Mafikeng IT departments we would not have been in a position to roll-out and continue our classes and operations immediately on taking up our new facilities.

#### LASTLY...

► MAYBE A WORD OF ADVICE TO OTHER LECTURERS WHO WANTS TO USE WIFI IN THE VENUE?

(*Things they should take into consideration?*)

It is an excellent tool to be applied and deployed in-order to improve not only class participation but also to bring practice to class.



“

WiFi @ Soccer  
Varsity Cup  
(Mafikeng)  
is now a  
welcomed  
reality...

”

# Wi-Fi INSTALLATION ENABLES BROADCASTING WITH MUCH MORE EASE..

The recent installation of Wi-Fi at the Soccer Institute on the Mafikeng campus is a total game changer. The Wi-Fi range now spans the entire building and covers part of the stadium. In the past IT had to configure a temporary connection in the Soccer Institute's Boardroom. Media representatives would then collect content from the stadium, and rush to the boardroom to tweet and publish updates. Since the installation of Wi-Fi, this use case has changed all together. According to Mr Justice Metswi, Mafikeng campus IT Service Manager, "media representatives are now able to use our Wi-Fi at the stadium to engage in live tweets and publish content without running to the boardroom first - we now forget that there is a boardroom in the vicinity".

Executive management also attends some of the events at the stadium, such as the Vice-Chancellor, who uses Wi-Fi while in attendance. Justice confirms that "the campus Marketing Department is one of the biggest users of the new Wi-Fi by far, one may easily say that they support the service extensively". He concludes that "the installation of Wi-Fi at the Soccer Institute was a great initiative, as many events are held there and Wi-Fi comes in very handy, especially when catering for official events". Justice is thankful for all of the stakeholders who were involved in the setup, with special reference to IT Central, Campus IT and IT Management.



“

The Intranet  
has a brand  
new look

”

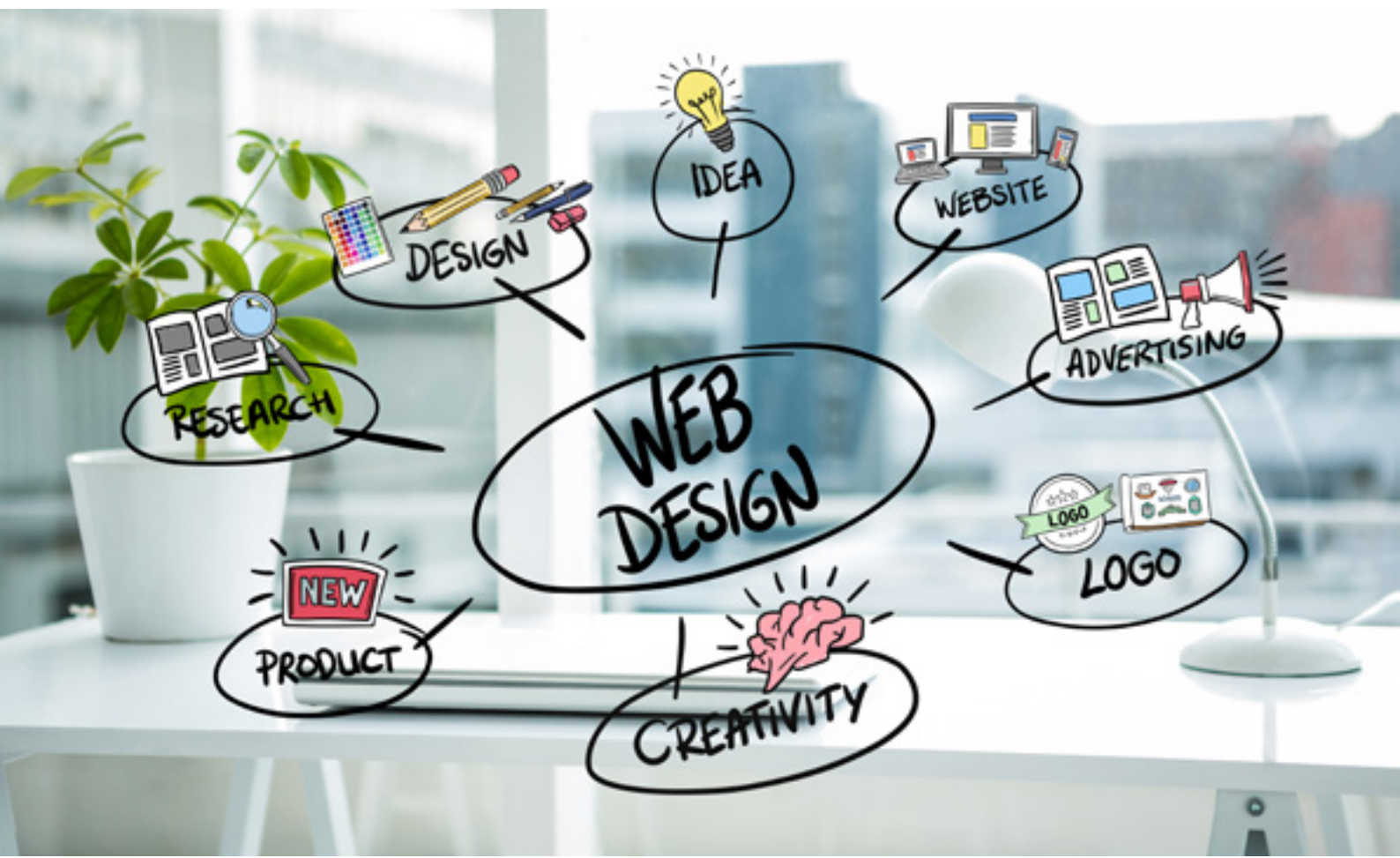
# NWU INTRANET IS NOW MOBILE FRIENDLY

The NWU intranet was switched to a new theme (“look-and-feel”) in the first week of October. This means that the current content is displayed in a new way.

The new theme is a responsive design based on the bootstrap framework and it enables NWU staff to view the content of the intranet on their mobile devices.

All the official NWU correspondence for staff, as well as important internal department specific content is available on the NWU intranet. It could be very useful to access it via your mobile device.

Some of the content that was initially created in tables (before the theme-switch) is not optimized for mobile devices yet but we are in the process of educating publishers on better ways to present these type of content.



“

eFundi has  
been  
upgraded!!

”



# EFUNDI LOOKS FAMILIAR BUT WITH SOME NEW EXCITING FEATURES!!



Responsive (Morpheus) Portal – the biggest redesign of the system since Sakai was launched, offers a user interface on desktop, tablet and mobile phone.



Public Announcement System tool – allows important messages to be broadcast to all users.



Lesson tool enhancements – Simplified menu bar - section breaks and column breaks - enhanced student content areas and peer review rubrics - etc.

Improved assessments - New question type (hot spots) - Section, group, and individual-specific delivery settings and lots more...

Mathematical Notation eFundi can now display LaTeX equations as mathematical notation in the WYSIWYG HTML editor.

To find out more, please contact the eFundi support team on your campus.

L  
M  
S



“

What is the  
ASAUDIT  
Leadership  
Institute?

”

# ANNUAL EVENT DESIGNED AS A PROFESSIONAL DEVELOPMENT PROGRAMME

The South African ASAUDIT Leadership Institute will be held from the 5th - 9th of September 2016, at the Le Franschhoek Hotel in Franschhoek, Cape Town.

This annual South African event, is designed as a professional development programme for those who manage some aspect of information technology and resources in higher education, whether within their department or for the entire institution. If you are a new CIO or an experienced senior-level leader who aspires to a CIO position, then you should attend the Leadership programme.

<http://www.asaudit.ac.za/Pages/ali.aspx>

**GAWIE LE ROUX**  
**LAPIES APHANE**

**PAUL BUYS**  
**PAUL GROBLER**

**RIAAAN MARX**  
**STEPHAN BADENHORST**



““

Spring General  
Institutional  
Meeting 2016  
Sol Plaatje  
University

””

# ASAUDIT EXCELLENT OPPORTUNITY TO ENGAGE WITH IT DIRECTORS

This bi-annual ASAUDIT General Institutional Meeting was hosted by Sol Plaatje University on 12-13 October 2016. The theme of the meeting was ‘Cost Containment’ which is the primary challenge universities face as the landscape of Higher Education evolves in South Africa. This was a two day conference with an evening gala dinner which offered an excellent opportunity to engage with the University IT directors and practitioners. [Read more...](#)

**1** 13 OCTOBER - DAY 2  
STORAGE STRATEGY  
BOETA PRETORIUS &  
FLIP VAN SCHALKWYK

**2** 13 OCTOBER - DAY 2  
eCOMMUNICATIONS  
GAWIE LE ROUX

**3** 13 OCTOBER - DAY 2  
PC LAB VIRTUALISATION  
BAREND PRETORIUS



“ Personalia ”

2016



## RETIREMENT

*Mr Riaan van der Walt:* “May all the years ahead bring you great joy and relaxation. Happy retirement!”



## RESIGNATION

*Mr Adriaan Engelbrecht:* “and Amore we wish you well and tons of happiness in Cape Town.”



## BIRTHDAYS & CELEBRATIONS

*If you had celebrated a birthday:* “We hope this wonderful day had fill up your heart with joy and blessings.”

*If yours is still to come...* ”Have a fun-filled-joyous Birthday!!”

*Me Ria van Deventer:* “Congratulations with the birth of your grandchild Isabella.”



## CONDOLANCES

*Mr Charles Mokwena & Asanda Nqweniso:*” Please accept our deepest condolences for your family’s loss. Our heartfelt sympathy goes out to you and your family.”



2016

SEASON'S GREETINGS  
FROM ALL OF US  
IT@NWU



““ After a long turbulent year we would like to reconfirm our commitment to develop best in class information and communications technology to enable and support the core business. As the new structures unfolds we will engage with you to make sure we deliver the IT promise. Have a blessed festive season, rest well and come back with renewed strength ””

“ While we can't really predict what the future holds, we may look at new IT possibilities to come in 2017 ”

# 1 VARIOUS AUTOMATION OF PAPER FORMS

## DIY PORTAL WITH

- ▶ Query Leave balance
- ▶ Leave application
- ▶ Update of biographical, contact and address information
- ▶ Update of next of kin and spouse information
- ▶ Conflict of interest

# 2 VARIOUS AUTOMATION OF PAPER FORMS

## DIY PORTAL

- ▶ Various automated processes for post graduate students
- ▶ Students request formal documentation e.g. academic records and various others to follow

# 3 VERIFICATIONS OF SOUTH-AFRICAN ID'S

- ▶ Less paper evidence needed

# 4 ONLINE PAYMENT OPTION

- ▶ e.g. like PayPal





Should you wish to provide us with feedback, feel free to drop us  
an email at  
**[talk2IT@nwu.ac.za](mailto:talk2IT@nwu.ac.za)**